

**Week 9: May 15, 2020**

The 24Pet® ShelterWatch Report: COVID-19 Impact report is a weekly gauge of U.S. homeless pet populations in the care of animal welfare organizations. Data is aggregated via the PetPoint Animal Management Software, a cloud-based application developed and launched in 2005. PetPoint is the most widely used animal management application in North American animal welfare.

The COVID-19 Impact Report aggregates data from 1191 animal welfare organizations (“AWOs”) in the United States. It compares the weekly data to data from the week before the federal declaration (March 7-13) and same week in 2019.

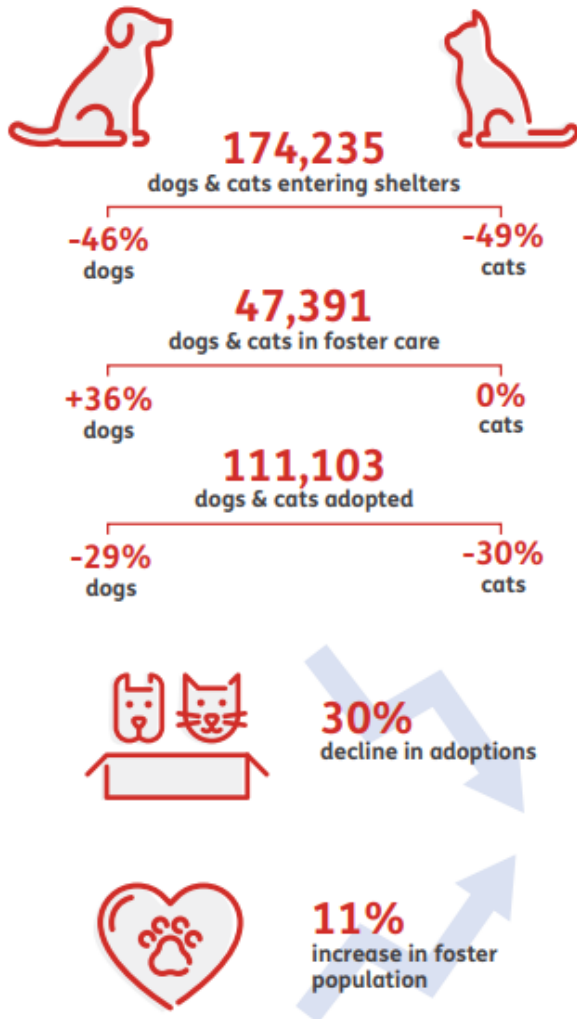
For the purposes here, AWOs are defined as animal control agencies, SPCAs, humane societies and rescue groups. Only data from AWOs operating PetPoint during both January 1, 2019 to current have been included. This week’s report looks different, it is our first step in fully automating this report. Now that this report is automated, you will see small changes in in prior week’s data. This occurred because this report is generated off live data allowing user to update historical records. For commentary see: <https://pethealth.force.com/community/s/blog>

## As the world navigates through a new reality, our pet population remains vulnerable and in-need.

Despite temporary closings and reduced shelter capacity, at least 174,235 new animals have arrived in the 1,191 shelters monitored by the 24Pet® ShelterWatch Report since the start of the pandemic. This number is expected to surge in the coming months with an anticipated increase in relinquished and abandoned animals.

March 13 - May 15, 2020 compared to the same period in 2019

### US NATIONAL STATS



### STATS BY STATE

#### CALIFORNIA

**-47%**  
dogs & cats entering shelters



foster care		adoption	
+67% dogs	-2% cats	-25% dogs	-34% cats

#### ILLINOIS

**-25%**  
dogs & cats entering shelters



foster care		adoption	
+13% dogs	+15% cats	+9% dogs	-17% cats

#### NEW YORK

**-53%**  
dogs & cats entering shelters



foster care		adoption	
-4% dogs	-6% cats	-43% dogs	-38% cats

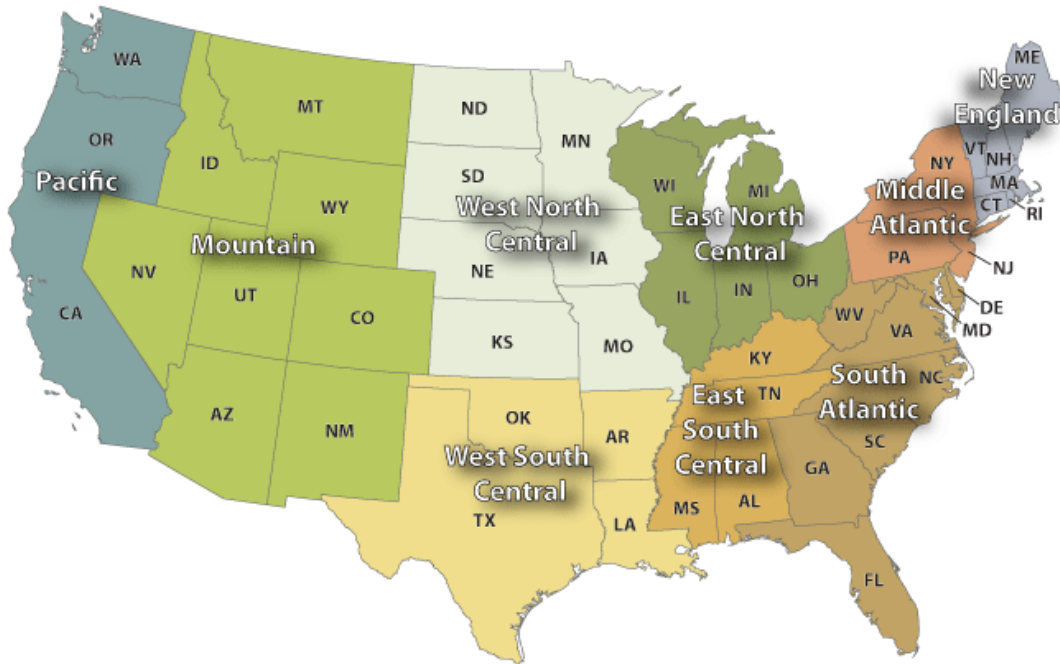
**NATIONAL:**

	Total	Cat		Dog		Total			March 7-13, 2020			Same Week 2019			
		Wk Chg	YoY	Total	Wk Chg	YoY	Total	Wk Chg	YoY	Cat	Dog	Total	Cat	Dog	Total
<b>Intakes</b>															
Intake Operation															
<b>Total</b>	<b>14327</b>	<b>15.6%</b>	<b>-37.3%</b>	<b>10624</b>	<b>-41.1%</b>	<b>-45.3%</b>	<b>24951</b>	<b>-18.0%</b>	<b>-41.0%</b>	<b>12389</b>	<b>18049</b>	<b>30438</b>	<b>22845</b>	<b>19433</b>	<b>42278</b>
Owner/Guardian Surrender	4148	3.9%	-34.9%	2741	-39.9%	-41.5%	6889	-19.4%	-37.7%	3994	4558	8552	6370	4688	11058
Return	319	-43.7%	-46.5%	622	-38.4%	-41.5%	941	-40.3%	-43.3%	567	1010	1577	596	1064	1660
Seized / Custody	943	18.9%	-40.0%	1253	-38.7%	-50.4%	2196	-22.6%	-46.4%	793	2045	2838	1571	2526	4097
Stray	6974	34.2%	-37.0%	3498	-41.5%	-49.5%	10472	-6.3%	-41.8%	5198	5977	11175	11077	6931	18008
Transfer In	1943	5.8%	-39.9%	2510	-43.7%	-40.6%	4453	-29.3%	-40.3%	1837	4459	6296	3231	4224	7455
<b>Outcomes</b>															
Outcome Operation															
<b>Total</b>	<b>9536</b>	<b>-18.1%</b>	<b>-40.6%</b>	<b>11352</b>	<b>-38.2%</b>	<b>-38.0%</b>	<b>20888</b>	<b>-30.4%</b>	<b>-39.2%</b>	<b>11640</b>	<b>18383</b>	<b>30023</b>	<b>16044</b>	<b>18296</b>	<b>34340</b>
Adoption	6178	-18.8%	-26.9%	6781	-34.1%	-30.1%	12959	-27.6%	-28.6%	7610	10283	17893	8455	9697	18152
Died	278	57.1%	-60.8%	66	-56.9%	-60.2%	344	4.2%	-60.7%	177	153	330	709	166	875
Euthanasia	1315	-18.9%	-62.6%	792	-53.4%	-62.6%	2107	-36.6%	-62.6%	1622	1700	3322	3512	2116	5628
Return to Owner/Guardian	223	-44.9%	-58.6%	1828	-38.4%	-42.6%	2051	-39.2%	-44.9%	405	2967	3372	538	3185	3723
Transfer Out	1542	-15.6%	-45.5%	1885	-42.5%	-39.8%	3427	-32.9%	-42.5%	1826	3280	5106	2830	3132	5962
<b>Foster Starts</b>															
Week Starting															
5/9/2020	6061	147.3%	-15.0%	2715	-11.4%	-0.3%	8776	59.2%	-10.9%	2451	3063	5514	7130	2724	9854
<b>Total Inventory</b>															
Week Starting															
5/9/2020	70097	6.6%	-22.9%	53134	-24.5%	-22.2%	123231	-9.5%	-22.6%	65772	70410	136182	90923	68307	159230
<b>In Foster</b>															
Week Starting															
5/9/2020	29426	90.7%	-0.2%	17959	13.0%	36.4%	47385	51.3%	11.1%	15434	15887	31321	29471	13165	42636
<b>In Shelter</b>															
Week Starting															
5/9/2020	40671	-19.2%	-33.8%	35175	-35.5%	-36.2%	75846	-27.7%	-34.9%	50338	54523	104861	61452	55142	116594

For more information please contact: Steve Zeidman  
 Senior Vice President, Software Solutions  
 Pethealth Inc.  
 steve.zeidman@Pethealthinc.com

REGIONAL:

U.S. Census Divisions



Pacific (AK, CA, HI, OR, WA):

Intakes	Intake Operation	Cat			Dog			Total			March 7-13, 2020			Same Week 2019		
		Total	Wk Chg	YoY	Total	Wk Chg	YoY	Total	Wk Chg	YoY	Cat	Dog	Total	Cat	Dog	Total
<b>Total</b>		14327	15.6%	-37.3%	10624	-41.1%	-45.3%	24951	-18.0%	-41.0%	12389	18049	30438	22845	19433	42278
	Owner/Guardian Surrender	4148	3.9%	-34.9%	2741	-39.9%	-41.5%	6889	-19.4%	-37.7%	3994	4558	8552	6370	4688	11058
	Return	319	-43.7%	-46.5%	622	-38.4%	-41.5%	941	-40.3%	-43.3%	567	1010	1577	596	1064	1660
	Seized / Custody	943	18.9%	-40.0%	1253	-38.7%	-50.4%	2196	-22.6%	-46.4%	793	2045	2838	1571	2526	4097
	Stray	6974	34.2%	-37.0%	3498	-41.5%	-49.5%	10472	-6.3%	-41.8%	5198	5977	11175	11077	6931	18008
	Transfer In	1943	5.8%	-39.9%	2510	-43.7%	-40.6%	4453	-29.3%	-40.3%	1837	4459	6296	3231	4224	7455

Outcomes	Outcome Operation	Cat			Dog			Total			March 7-13, 2020			Same Week 2019		
		Total	Wk Chg	YoY	Total	Wk Chg	YoY	Total	Wk Chg	YoY	Cat	Dog	Total	Cat	Dog	Total
<b>Total</b>		9536	-18.1%	-40.6%	11352	-38.2%	-38.0%	20888	-30.4%	-39.2%	11640	18383	30023	16044	18296	34340
	Adoption	6178	-18.8%	-26.9%	6781	-34.1%	-30.1%	12959	-27.6%	-28.6%	7610	10283	17893	8455	9697	18152
	Died	278	57.1%	-60.8%	66	-56.9%	-60.2%	344	4.2%	-60.7%	177	153	330	709	166	875
	Euthanasia	1315	-18.9%	-62.6%	792	-53.4%	-62.6%	2107	-36.6%	-62.6%	1622	1700	3322	3512	2116	5628
	Return to Owner/Guardian	223	-44.9%	-58.6%	1828	-38.4%	-42.6%	2051	-39.2%	-44.9%	405	2967	3372	538	3185	3723
	Transfer Out	1542	-15.6%	-45.5%	1885	-42.5%	-39.8%	3427	-32.9%	-42.5%	1826	3280	5106	2830	3132	5962

Foster Starts	Week Starting	Cat			Dog			Total			March 7-13, 2020			Same Week 2019		
		Total	Wk Chg	YoY	Total	Wk Chg	YoY	Total	Wk Chg	YoY	Cat	Dog	Total	Cat	Dog	Total
	5/9/2020	6061	147.3%	-15.0%	2715	-11.4%	-0.3%	8776	59.2%	-10.9%	2451	3063	5514	7130	2724	9854

Total Inventory	Week Starting	Cat			Dog			Total			March 7, 2020			Same Week 2019		
		Total	Wk Chg	YoY	Total	Wk Chg	YoY	Total	Wk Chg	YoY	Cat	Dog	Total	Cat	Dog	Total
	5/9/2020	70097	6.6%	-22.9%	53134	-24.5%	-22.2%	123231	-9.5%	-22.6%	65772	70410	136182	90923	68307	159230

In Foster	Week Starting	Cat			Dog			Total			March 7, 2020			Same Week 2019		
		Total	Wk Chg	YoY	Total	Wk Chg	YoY	Total	Wk Chg	YoY	Cat	Dog	Total	Cat	Dog	Total
	5/9/2020	29426	90.7%	-0.2%	17959	13.0%	36.4%	47385	51.3%	11.1%	15434	15887	31321	29471	13165	42636

In Shelter	Week Starting	Cat			Dog			Total			March 7, 2020			Same Week 2019		
		Total	Wk Chg	YoY	Total	Wk Chg	YoY	Total	Wk Chg	YoY	Cat	Dog	Total	Cat	Dog	Total
	5/9/2020	40671	-19.2%	-33.8%	35175	-35.5%	-36.2%	75846	-27.7%	-34.9%	50338	54523	104861	61452	55142	116594

## Mountain (AZ, CO, ID, MT, NM, NV, UT, WY):

Intakes	Intake Operation	Cat			Dog			Total			March 7-13, 2020			Same Week 2019		
		Total	Wk Chg	YoY	Total	Wk Chg	YoY	Total	Wk Chg	YoY	Cat	Dog	Total	Cat	Dog	Total
<b>Total</b>		942	21.2%	-36.6%	907	-38.2%	-46.1%	1849	-17.6%	-41.7%	777	1468	2245	1486	1683	3169
Owner/Guardian Surrender		293	21.6%	-36.3%	242	-23.2%	-24.4%	535	-3.8%	-31.4%	241	315	556	460	320	780
Return		25	-49.0%	-43.2%	56	-33.3%	-42.9%	81	-39.1%	-43.0%	49	84	133	44	98	142
Seized / Custody		65	-14.5%	-43.0%	151	-28.4%	-34.1%	216	-24.7%	-37.0%	76	211	287	114	229	343
Stray		393	27.2%	-34.2%	259	-37.4%	-49.6%	652	-9.8%	-41.3%	309	414	723	597	514	1111
Transfer In		166	62.7%	-38.7%	199	-55.2%	-61.9%	365	-33.2%	-54.0%	102	444	546	271	522	793

Outcomes	Outcome Operation	Cat			Dog			Total			March 7-13, 2020			Same Week 2019		
		Total	Wk Chg	YoY	Total	Wk Chg	YoY	Total	Wk Chg	YoY	Cat	Dog	Total	Cat	Dog	Total
<b>Total</b>		650	-23.6%	-40.5%	1027	-34.6%	-33.1%	1677	-30.8%	-36.2%	851	1571	2422	1093	1535	2628
Adoption		475	-21.4%	-28.9%	588	-33.2%	-33.4%	1063	-28.4%	-31.5%	604	880	1484	668	883	1551
Died		14	7.7%	-66.7%	4	-20.0%	-66.7%	18	0.0%	-66.7%	13	5	18	42	12	54
Euthanasia		59	-41.6%	-72.3%	57	-26.9%	-54.4%	116	-35.2%	-65.7%	101	78	179	213	125	338
Return to Owner/Guardian		24	4.3%	-51.0%	231	-33.0%	-44.7%	255	-30.7%	-45.4%	23	345	368	49	418	467
Transfer Out		78	-29.1%	-35.5%	147	-44.1%	51.5%	225	-39.7%	3.2%	110	263	373	121	97	218

Foster Starts	Week Starting	Cat			Dog			Total			March 7-13, 2020			Same Week 2019		
		Total	Wk Chg	YoY	Total	Wk Chg	YoY	Total	Wk Chg	YoY	Cat	Dog	Total	Cat	Dog	Total
	5/9/2020	394	203.1%	-35.0%	171	35.7%	7.5%	565	120.7%	-26.1%	130	126	256	606	159	765

Total Inventory	Week Starting	Cat			Dog			Total			March 7, 2020			Same Week 2019		
		Total	Wk Chg	YoY	Total	Wk Chg	YoY	Total	Wk Chg	YoY	Cat	Dog	Total	Cat	Dog	Total
	5/9/2020	5049	-2.9%	-26.3%	4338	-20.3%	-19.7%	9387	-11.8%	-23.4%	5200	5441	10641	6849	5405	12254

In Foster	Week Starting	Cat			Dog			Total			March 7, 2020			Same Week 2019		
		Total	Wk Chg	YoY	Total	Wk Chg	YoY	Total	Wk Chg	YoY	Cat	Dog	Total	Cat	Dog	Total
	5/9/2020	1815	63.4%	-21.7	1069	-4.2%	10.9%	2884	29.5%	-12.1%	1111	1116	2227	2318	964	3282

In Shelter	Week Starting	Cat			Dog			Total			March 7, 2020			Same Week 2019		
		Total	Wk Chg	YoY	Total	Wk Chg	YoY	Total	Wk Chg	YoY	Cat	Dog	Total	Cat	Dog	Total
	5/9/2020	3234	-20.9%	-28.6%	3269	-24.4%	-26.4%	6503	-22.7%	-27.5%	4089	4325	8414	4531	4441	8972

## West North Central (IA, KS, MN, MO, ND, NE, SD):

Intakes	Intake Operation	Cat			Dog			Total			March 7-13, 2020			Same Week 2019		
		Total	Wk Chg	YoY	Total	Wk Chg	YoY	Total	Wk Chg	YoY	Cat	Dog	Total	Cat	Dog	Total
<b>Total</b>		857	-12.6%	-40.4%	743	-42.0%	-37.4%	1600	-29.3%	-39.0%	980	1282	2262	1437	1186	2623
Owner/Guardian Surrender		300	-26.3%	-42.2%	206	-40.8%	-34.0%	506	-33.0%	-39.1%	407	348	755	519	312	831
Return		32	-38.5%	-47.5%	54	-47.1%	-34.9%	86	-44.2%	-40.3%	52	102	154	61	83	144
Seized / Custody		35	-23.9%	-43.5%	111	6.7%	-27.5%	146	-2.7%	-32.1%	46	104	150	62	153	215
Stray		388	13.1%	-21.8%	214	-44.4%	-26.0%	602	-17.3%	-23.3%	343	385	728	496	289	785
Transfer In		102	-22.7%	-65.9%	158	-53.9%	-54.7%	260	-45.3%	-59.9%	132	343	475	299	349	648

Outcomes	Outcome Operation	Cat			Dog			Total			March 7-13, 2020			Same Week 2019		
		Total	Wk Chg	YoY	Total	Wk Chg	YoY	Total	Wk Chg	YoY	Cat	Dog	Total	Cat	Dog	Total
<b>Total</b>		610	-39.8%	-40.0%	723	-43.7%	-36.5%	1333	-42.0%	-38.1%	1014	1285	2299	1016	1138	2154
Adoption		459	-34.3%	-32.1%	450	-47.7%	-35.3%	909	-41.7%	-33.7%	699	861	1560	676	696	1372
Died		19	26.7%	-51.3%	3	-75.0%	-66.7%	22	-18.5%	-54.2%	15	12	27	39	9	48
Euthanasia		68	-53.7%	-55.6%	35	-62.0%	-63.9%	103	-56.9%	-58.8%	147	92	239	153	97	250
Return to Owner/Guardian		19	-58.7%	-48.6%	179	-29.8%	-29.0%	198	-34.2%	-31.5%	46	255	301	37	252	289
Transfer Out		45	-57.9%	-59.5%	56	-13.8%	-33.3%	101	-41.3%	-48.2%	107	65	172	111	84	195

Foster Starts	Week Starting	Cat			Dog			Total			March 7-13, 2020			Same Week 2019		
		Total	Wk Chg	YoY	Total	Wk Chg	YoY	Total	Wk Chg	YoY	Cat	Dog	Total	Cat	Dog	Total
	5/9/2020	293	72.4%	-28.0%	229	13.4%	53.7%	522	40.3%	-6.1%	170	202	372	407	149	556

Total Inventory	Week Starting	Cat			Dog			Total			March 7, 2020			Same Week 2019		
		Total	Wk Chg	YoY	Total	Wk Chg	YoY	Total	Wk Chg	YoY	Cat	Dog	Total	Cat	Dog	Total
	5/9/2020	5801	-4.8%	-9.1%	3641	-16.0%	-12.4%	9442	-9.4%	-10.4%	6095	4332	10427	6383	4158	10541

In Foster	Week Starting	Cat			Dog			Total			March 7, 2020			Same Week 2019		
		Total	Wk Chg	YoY	Total	Wk Chg	YoY	Total	Wk Chg	YoY	Cat	Dog	Total	Cat	Dog	Total
	5/9/2020	2525	46.0%	32.1%	1800	24.9%	72.9%	4325	36.4%	46.5%	1729	1441	3170	1911	1041	2952

In Shelter	Week Starting	Cat			Dog			Total			March 7, 2020			Same Week 2019		
		Total	Wk Chg	YoY	Total	Wk Chg	YoY	Total	Wk Chg	YoY	Cat	Dog	Total	Cat	Dog	Total
	5/9/2020	3276	-25.0%	-26.7%	1841	-36.3%	-40.9%	5117	-29.5%	-32.6%	4366	2891	7257	4472	3117	7589



## West South Central (AR, LA, OK, TX):

Intakes	Intake Operation	Cat			Dog			Total			March 7-13, 2020			Same Week 2019		
		Total	Wk Chg	YoY	Total	Wk Chg	YoY	Total	Wk Chg	YoY	Cat	Dog	Total	Cat	Dog	Total
	<b>Total</b>	2331	34.3%	-38.1%	2242	-36.5%	-42.5%	4573	-13.1%	-40.3%	1736	3529	5265	3763	3896	7659
	Owner/Guardian Surrender	563	35.7%	-35.1%	590	-28.0%	-34.3%	1153	-6.6%	-34.7%	415	820	1235	867	898	1765
	Return	34	-41.4%	-42.4%	108	-42.2%	-47.8%	142	-42.0%	-46.6%	58	187	245	59	207	266
	Seized / Custody	252	76.2%	-15.2%	278	-45.0%	-53.1%	530	-18.2%	-40.4%	143	505	648	297	593	890
	Stray	1192	29.6%	-43.5%	901	-42.6%	-48.8%	2093	-15.9%	-45.9%	920	1570	2490	2110	1761	3871
	Transfer In	290	45.0%	-32.6%	365	-18.3%	-16.5%	655	1.2%	-24.5%	200	447	647	430	437	867

Outcomes	Outcome Operation	Cat			Dog			Total			March 7-13, 2020			Same Week 2019		
		Total	Wk Chg	YoY	Total	Wk Chg	YoY	Total	Wk Chg	YoY	Cat	Dog	Total	Cat	Dog	Total
	<b>Total</b>	1450	9.8%	-43.5%	2393	-32.1%	-36.3%	3843	-20.6%	-39.2%	1320	3522	4842	2566	3759	6325
	Adoption	760	-0.4%	-23.5%	1229	-28.2%	-32.6%	1989	-19.6%	-22.9%	763	1711	2474	993	1587	2580
	Died	69	155.6%	-59.9%	15	-70.6%	-54.5%	84	7.7%	-59.0%	27	51	78	172	33	205
	Euthanasia	256	33.3%	-64.0%	181	-52.7%	-70.0%	437	-24.0%	-66.8%	192	383	575	711	604	1315
	Return to Owner/Guardian	46	-2.1%	2.2%	377	-38.6%	-37.9%	423	-36.0%	-35.1%	47	614	661	45	607	652
	Transfer Out	319	9.6%	-50.5%	591	-22.5%	-36.3%	910	-13.7%	-42.1%	291	763	1054	645	928	1573

Foster Starts	Week Starting	Cat			Dog			Total			March 7-13, 2020			Same Week 2019		
		Total	Wk Chg	YoY	Total	Wk Chg	YoY	Total	Wk Chg	YoY	Cat	Dog	Total	Cat	Dog	Total
	5/9/2020	780	140.0%	-26.6%	504	-17.9%	-2.7%	1284	36.7%	-18.7%	325	614	939	1062	518	1580

Total Inventory	Week Starting	Cat			Dog			Total			March 7, 2020			Same Week 2019		
		Total	Wk Chg	YoY	Total	Wk Chg	YoY	Total	Wk Chg	YoY	Cat	Dog	Total	Cat	Dog	Total
	5/9/2020	8203	11.1%	-32.8%	10275	-27.8%	-27.1%	18478	-14.5%	-29.8%	7384	14228	21612	12212	14094	26306

In Foster	Week Starting	Cat			Dog			Total			March 7, 2020			Same Week 2019		
		Total	Wk Chg	YoY	Total	Wk Chg	YoY	Total	Wk Chg	YoY	Cat	Dog	Total	Cat	Dog	Total
	5/9/2020	4786	77.2%	-2.7%	4580	17.1%	34.9%	9366	41.7%	12.6%	2701	3911	6612	4920	3396	8316

In Shelter	Week Starting	Cat			Dog			Total			March 7, 2020			Same Week 2019		
		Total	Wk Chg	YoY	Total	Wk Chg	YoY	Total	Wk Chg	YoY	Cat	Dog	Total	Cat	Dog	Total
	5/9/2020	3417	-27.0%	-53.1%	5695	-44.8%	-46.8%	9112	-39.3%	-49.3%	4683	10317	15000	7292	10698	17990

## East North Central (IL, IN, MI, OH, WI):

Intakes	Intake Operation	Cat			Dog			Total			March 7-13, 2020			Same Week 2019		
		Total	Wk Chg	YoY	Total	Wk Chg	YoY	Total	Wk Chg	YoY	Cat	Dog	Total	Cat	Dog	Total
	<b>Total</b>	2135	9.1%	-34.4%	1538	-38.8%	-42.4%	3673	-17.8%	-38.0%	1957	2513	4470	3255	2672	5927
	Owner/Guardian Surrender	707	-12.6%	-31.0%	290	-52.5%	-51.7%	997	-29.8%	-38.6%	809	611	1420	1024	600	1624
	Return	75	-36.4%	-42.7%	106	-40.4%	-43.0%	181	-38.9%	-42.9%	118	178	296	131	186	317
	Seized / Custody	80	19.4%	-37.5%	168	-15.6%	-26.3%	248	-6.8%	-30.3%	67	199	266	128	228	356
	Stray	978	36.2%	-36.3%	363	-45.6%	-58.8%	1341	-3.2%	-44.5%	718	667	1385	1536	882	2418
	Transfer In	295	20.4%	-32.3%	611	-28.8%	-21.3%	906	-17.9%	-25.2%	245	858	1103	436	776	1212

Outcomes	Outcome Operation	Cat			Dog			Total			March 7-13, 2020			Same Week 2019		
		Total	Wk Chg	YoY	Total	Wk Chg	YoY	Total	Wk Chg	YoY	Cat	Dog	Total	Cat	Dog	Total
	<b>Total</b>	1593	-18.3%	-31.7%	1684	-39.8%	-34.7%	3277	-31.0%	-33.3%	1949	2797	4746	2332	2579	4911
	Adoption	1275	-13.7%	-20.1%	1256	-33.6%	-23.2%	2531	-24.9%	-21.7%	1478	1892	3370	1596	1636	3232
	Died	29	20.8%	-62.3%	10	-65.5%	-33.3%	39	-26.4%	-57.6%	24	29	53	77	15	92
	Euthanasia	120	-32.6%	-56.4%	96	-51.8%	-55.3%	216	-42.7%	-55.9%	178	199	377	275	215	490
	Return to Owner/Guardian	42	-50.0%	-76.8%	242	-42.1%	-48.2%	284	-43.4%	-56.2%	84	418	502	181	467	648
	Transfer Out	127	-31.4%	-37.4%	80	-69.1%	-67.5%	207	-53.4%	-53.9%	185	259	444	203	246	449

Foster Starts	Week Starting	Cat			Dog			Total			March 7-13, 2020			Same Week 2019		
		Total	Wk Chg	YoY	Total	Wk Chg	YoY	Total	Wk Chg	YoY	Cat	Dog	Total	Cat	Dog	Total
	5/9/2020	847	90.8%	-13.2%	485	-13.5%	12.8%	1332	32.5%	-5.3%	444	561	1005	976	430	1406

Total Inventory	Week Starting	Cat			Dog			Total			March 7, 2020			Same Week 2019		
		Total	Wk Chg	YoY	Total	Wk Chg	YoY	Total	Wk Chg	YoY	Cat	Dog	Total	Cat	Dog	Total
	5/9/2020	12911	0.5%	-19.2%	8124	-24.6%	-17.2%	21035	-10.9%	-18.5%	12848	10771	23619	15988	9816	25804

In Foster	Week Starting	Cat			Dog			Total			March 7, 2020			Same Week 2019		
		Total	Wk Chg	YoY	Total	Wk Chg	YoY	Total	Wk Chg	YoY	Cat	Dog	Total	Cat	Dog	Total
	5/9/2020	4072	76.0%	-5.1%	2702	2.7%	29.8%	6774	37.0%	6.3%	2313	2632	4945	4289	2081	6370

In Shelter	Week Starting	Cat			Dog			Total			March 7, 2020			Same Week 2019		
		Total	Wk Chg	YoY	Total	Wk Chg	YoY	Total	Wk Chg	YoY	Cat	Dog	Total	Cat	Dog	Total
	5/9/2020	8839	-16.1%	-24.4%	5422	-33.4%	-29.9%	14261	-23.6%	-26.6%	10535	8139	18674	11699	7735	19434

## East South Central (AL, KY, MS, TN):

	Intake Operation	Cat			Dog			Total			March 7-13, 2020			Same Week 2019		
		Total	Wk Chg	YoY	Total	Wk Chg	YoY	Total	Wk Chg	YoY	Cat	Dog	Total	Cat	Dog	Total
<b>Intakes</b>	<b>Total</b>	867	72.0%	-34.7%	867	-33.7%	-47.8%	1734	-4.3%	-42.0%	504	1307	1811	1328	1660	2988
	Owner/Guardian Surrender	407	92.0%	-24.9%	323	-39.4%	-48.0%	730	-2.0%	-37.2%	212	533	745	542	621	1163
	Return	17	-32.0%	-39.3%	47	6.8%	-19.0%	64	-7.2%	-25.6%	25	44	69	28	58	86
	Seized / Custody	32	33.3%	6.7%	33	-51.5%	-57.7%	65	-29.3%	-39.8%	24	68	92	30	78	108
	Stray	309	60.9%	-49.7%	289	-38.1%	-54.5%	598	-9.3%	-52.1%	192	467	659	614	635	1249
	Transfer In	102	100.0%	-10.5%	175	-10.3%	-34.7%	277	12.6%	-27.5%	51	195	246	114	268	382
<b>Outcomes</b>	<b>Total</b>	588	13.7%	-34.3%	763	-45.3%	-44.3%	1351	-29.4%	-40.4%	517	1396	1913	895	1371	2266
	Adoption	348	7.7%	-14.7%	442	-12.3%	-18.5%	790	-4.5%	-16.8%	323	504	827	408	542	950
	Died	22	1000.0%	-48.8%	6	-45.5%	-64.7%	28	115.4%	-53.3%	2	11	13	43	17	60
	Euthanasia	102	14.6%	-62.1%	51	-71.8%	-72.7%	153	-43.3%	-66.4%	89	181	270	269	187	456
	Return to Owner/Guardian	12	0.0%	-7.7%	75	-44.9%	-53.1%	87	-41.2%	-49.7%	12	136	148	13	160	173
	Transfer Out	104	14.3%	-35.8%	189	-66.5%	-59.4%	293	-55.3%	-53.3%	91	564	655	162	465	627
<b>Foster Starts</b>	<b>Total</b>	244	221.1%	-18.7%	245	8.4%	-33.4%	489	61.9%	-26.8%	76	226	302	300	368	668
	5/9/2020	244	221.1%	-18.7%	245	8.4%	-33.4%	489	61.9%	-26.8%	76	226	302	300	368	668
<b>Total Inventory</b>	<b>Total</b>	3822	8.6%	-18.3%	5263	-17.5%	-16.0%	9085	-8.2%	-17.0%	3520	6376	9896	4676	6264	10940
	5/9/2020	3822	8.6%	-18.3%	5263	-17.5%	-16.0%	9085	-8.2%	-17.0%	3520	6376	9896	4676	6264	10940
<b>In Foster</b>	<b>Total</b>	1063	85.2%	-7.6%	1190	-6.6%	4.4%	2253	21.9%	-1.6%	574	1274	1848	1150	1140	2290
	5/9/2020	1063	85.2%	-7.6%	1190	-6.6%	4.4%	2253	21.9%	-1.6%	574	1274	1848	1150	1140	2290
<b>In Shelter</b>	<b>Total</b>	2759	-6.3%	-21.8%	4073	-20.2%	-20.5%	6832	-15.1%	-21.0%	2946	5102	8048	3526	5124	8650
	5/9/2020	2759	-6.3%	-21.8%	4073	-20.2%	-20.5%	6832	-15.1%	-21.0%	2946	5102	8048	3526	5124	8650

## New England (CT, MA, ME, NH, RI, VT):

	Intake Operation	Cat			Dog			Total			March 7-13, 2020			Same Week 2019		
		Total	Wk Chg	YoY	Total	Wk Chg	YoY	Total	Wk Chg	YoY	Cat	Dog	Total	Cat	Dog	Total
<b>Intakes</b>	<b>Total</b>	389	-33.0%	-32.0%	342	-36.0%	-40.0%	731	-34.4%	-36.0%	581	534	1115	572	570	1142
	Owner/Guardian Surrender	177	-14.9%	-28.3%	53	-23.2%	-57.9%	230	-17.0%	-38.3%	208	69	277	247	126	373
	Return	17	-37.0%	-48.5%	22	-37.1%	-31.3%	39	-37.1%	-40.0%	27	35	62	33	32	65
	Seized / Custody	7	40.0%	75.0%	7	-61.1%	-53.3%	14	-39.1%	-26.3%	5	18	23	4	15	19
	Stray	111	-13.3%	-39.3%	117	18.2%	-13.3%	228	0.4%	-28.3%	128	99	227	183	135	318
	Transfer In	77	-63.8%	-26.7%	143	-54.3%	-45.4%	220	-58.2%	-40.1%	213	313	526	105	262	367
<b>Outcomes</b>	<b>Total</b>	320	-30.9%	-37.5%	325	-30.9%	-42.4%	645	-30.9%	-40.1%	463	470	933	512	564	1076
	Adoption	291	-27.4%	-32.9%	259	-32.2%	-45.0%	550	-29.8%	-39.2%	401	382	783	434	471	905
	Died		-100.0%	-100.0%	1	0.0%		1	-88.9%	-87.5%	8	1	9	8		8
	Euthanasia	19	-36.7%	-48.6%	11	-45.0%	-47.6%	30	-40.0%	-48.3%	30	20	50	37	21	58
	Return to Owner/Guardian	10	-28.6%	-23.1%	48	-4.0%	-20.0%	58	-9.4%	-20.5%	14	50	64	13	60	73
	Transfer Out		-100.0%	-100.0%	6	-64.7%	-50.0%	6	-77.8%	-81.3%	10	17	27	20	12	32
<b>Foster Starts</b>	<b>Total</b>	182	83.8%	-11.7%	39	-40.9%	-66.9%	221	33.9%	-31.8%	99	66	165	206	118	324
	5/9/2020	182	83.8%	-11.7%	39	-40.9%	-66.9%	221	33.9%	-31.8%	99	66	165	206	118	324
<b>Total Inventory</b>	<b>Total</b>	2221	-4.3%	-22.5%	1293	-23.9%	-25.0%	3514	-12.6%	-23.4%	2321	1699	4020	2864	1725	4589
	5/9/2020	2221	-4.3%	-22.5%	1293	-23.9%	-25.0%	3514	-12.6%	-23.4%	2321	1699	4020	2864	1725	4589
<b>In Foster</b>	<b>Total</b>	905	51.1%	3.1%	430	7.2%	0.9%	1335	33.5%	2.4%	599	401	1000	878	426	1304
	5/9/2020	905	51.1%	3.1%	430	7.2%	0.9%	1335	33.5%	2.4%	599	401	1000	878	426	1304
<b>In Shelter</b>	<b>Total</b>	1316	-23.6%	-33.7%	863	-33.5%	-33.6%	2179	-27.8%	-33.7%	1722	1298	3020	1986	1299	3285
	5/9/2020	1316	-23.6%	-33.7%	863	-33.5%	-33.6%	2179	-27.8%	-33.7%	1722	1298	3020	1986	1299	3285

## Middle Atlantic (NJ, NY, PA):

Intakes	Intake Operation	Cat			Dog			Total			March 7-13, 2020			Same Week 2019		
		Total	Wk Chg	YoY	Total	Wk Chg	YoY	Total	Wk Chg	YoY	Cat	Dog	Total	Cat	Dog	Total
<b>Total</b>		1223	-10.9%	-41.2%	654	-53.3%	-48.8%	1877	-32.3%	-44.1%	1372	1400	2772	2081	1278	3359
Owner/Guardian Surrender		350	-23.4%	-46.4%	121	-64.3%	-63.7%	471	-40.8%	-52.2%	457	339	796	653	333	986
Return		34	-58.5%	-55.8%	41	-56.4%	-52.9%	75	-57.4%	-54.3%	82	94	176	77	87	164
Seized / Custody		33	-31.3%	-43.1%	34	-46.9%	-63.4%	67	-40.2%	-55.6%	48	64	112	58	93	151
Stray		714	13.0%	-39.5%	222	-48.1%	-44.2%	936	-11.7%	-40.7%	632	428	1060	1180	398	1578
Transfer In		92	-39.9%	-18.6%	236	-50.3%	-35.7%	328	-47.8%	-31.7%	153	475	628	113	367	480

Outcomes	Outcome Operation	Cat			Dog			Total			March 7-13, 2020			Same Week 2019		
		Total	Wk Chg	YoY	Total	Wk Chg	YoY	Total	Wk Chg	YoY	Cat	Dog	Total	Cat	Dog	Total
<b>Total</b>		845	-34.3%	-46.7%	812	-39.8%	-36.6%	1657	-37.1%	-42.2%	1286	1349	2635	1584	1281	2865
Adoption		663	-24.5%	-31.4%	606	-37.5%	-28.2%	1269	-31.3%	-29.9%	878	970	1848	966	844	1810
Died		28	-9.7%	-53.3%	6	100.0%	-45.5%	34	0.0%	-52.1%	31	3	34	60	11	71
Euthanasia		63	-47.9%	-65.2%	54	-45.5%	-51.4%	117	-46.8%	-59.9%	121	99	220	181	111	292
Return to Owner/Guardian		9	-69.0%	-80.0%	119	-43.1%	-42.8%	128	-46.2%	-49.4%	29	209	238	45	208	253
Transfer Out		82	-63.9%	-75.3%	27	-60.3%	-74.8%	109	-63.1%	-75.2%	227	68	295	332	107	439

Foster Starts	Week Starting	Cat			Dog			Total			March 7-13, 2020			Same Week 2019		
		Total	Wk Chg	YoY	Total	Wk Chg	YoY	Total	Wk Chg	YoY	Cat	Dog	Total	Cat	Dog	Total
	5/9/2020	782	183.3%	4.4%	231	3.1%	29.1%	1013	102.6%	9.2%	276	224	500	749	179	928

Total Inventory	Week Starting	Cat			Dog			Total			March 7, 2020			Same Week 2019		
		Total	Wk Chg	YoY	Total	Wk Chg	YoY	Total	Wk Chg	YoY	Cat	Dog	Total	Cat	Dog	Total
	5/9/2020	7931	9.3%	-24.8%	3847	-25.6%	-27.8%	11778	-5.2%	-25.8%	7259	5170	12429	10553	5331	15884

In Foster	Week Starting	Cat			Dog			Total			March 7, 2020			Same Week 2019		
		Total	Wk Chg	YoY	Total	Wk Chg	YoY	Total	Wk Chg	YoY	Cat	Dog	Total	Cat	Dog	Total
	5/9/2020	3547	102.3%	7.5%	1328	22.6%	39.5%	4875	71.9%	14.7%	1753	1083	2836	3300	952	4252

In Shelter	Week Starting	Cat			Dog			Total			March 7, 2020			Same Week 2019		
		Total	Wk Chg	YoY	Total	Wk Chg	YoY	Total	Wk Chg	YoY	Cat	Dog	Total	Cat	Dog	Total
	5/9/2020	4384	-20.4%	-39.6%	2519	-38.4%	-42.5%	6903	-28.0%	-40.7%	5506	4087	9593	7253	4379	11632

## South Atlantic (DE, FL, GA, MD, NC, SC, VA, WV):

Intakes	Intake Operation	Cat			Dog			Total			March 7-13, 2020			Same Week 2019		
		Total	Wk Chg	YoY	Total	Wk Chg	YoY	Total	Wk Chg	YoY	Cat	Dog	Total	Cat	Dog	Total
<b>Total</b>		3811	25.4%	-36.4%	2241	-44.3%	-48.1%	6052	-14.3%	-41.3%	3039	4026	7065	5989	4314	10303
Owner/Guardian Surrender		1003	19.4%	-28.9%	631	-38.4%	-38.9%	1634	-12.3%	-33.1%	840	1024	1864	1411	1032	2443
Return		62	-39.8%	-40.4%	137	-25.9%	-39.9%	199	-30.9%	-40.1%	103	185	288	104	228	332
Seized / Custody		348	19.2%	-49.9%	319	-52.0%	-59.5%	667	-30.2%	-55.0%	292	664	956	694	788	1482
Stray		1890	52.2%	-33.7%	757	-38.3%	-48.3%	2647	7.3%	-38.7%	1242	1226	2468	2852	1463	4315
Transfer In		508	-9.6%	-45.3%	397	-57.2%	-50.6%	905	-39.2%	-47.7%	562	927	1489	928	803	1731

Outcomes	Outcome Operation	Cat			Dog			Total			March 7-13, 2020			Same Week 2019		
		Total	Wk Chg	YoY	Total	Wk Chg	YoY	Total	Wk Chg	YoY	Cat	Dog	Total	Cat	Dog	Total
<b>Total</b>		2404	-17.3%	-41.8%	2436	-39.4%	-40.7%	4840	-30.2%	-41.2%	2907	4023	6930	4128	4110	8238
Adoption		1272	-21.5%	-27.2%	1274	-38.7%	-37.2%	2546	-31.2%	-32.6%	1620	2079	3699	1747	2029	3776
Died		69	53.3%	-64.4%	9	-71.0%	-84.7%	78	2.6%	-69.2%	45	31	76	194	59	253
Euthanasia		414	-16.9%	-60.1%	178	-55.7%	-62.0%	592	-34.2%	-60.7%	498	402	900	1037	468	1505
Return to Owner/Guardian		31	-55.7%	-59.7%	344	-43.7%	-46.2%	375	-44.9%	-47.6%	70	611	681	77	639	716
Transfer Out		618	-8.3%	-42.4%	631	-29.9%	-31.0%	1249	-20.6%	-37.2%	674	900	1574	1073	915	1988

Foster Starts	Week Starting	Cat			Dog			Total			March 7-13, 2020			Same Week 2019		
		Total	Wk Chg	YoY	Total	Wk Chg	YoY	Total	Wk Chg	YoY	Cat	Dog	Total	Cat	Dog	Total
	5/9/2020	1672	160.0%	-9.7%	527	-22.4%	7.3%	2199	66.3%	-6.1%	643	679	1322	1852	491	2343

Total Inventory	Week Starting	Cat			Dog			Total			March 7, 2020			Same Week 2019		
		Total	Wk Chg	YoY	Total	Wk Chg	YoY	Total	Wk Chg	YoY	Cat	Dog	Total	Cat	Dog	Total
	5/9/2020	15791	10.1%	-27.5%	11809	-28.0%	-23.0%	27600	-10.2%	-25.6%	14336	16398	30734	21766	15335	37101

In Foster	Week Starting	Cat			Dog			Total			March 7, 2020			Same Week 2019		
		Total	Wk Chg	YoY	Total	Wk Chg	YoY	Total	Wk Chg	YoY	Cat	Dog	Total	Cat	Dog	Total
	5/9/2020	6688	127.7%	-2.2%	3213	18.4%	49.0%	9901	75.2%	10.0%	2937	2713	5650	6841	2156	8997

In Shelter	Week Starting	Cat			Dog			Total			March 7, 2020			Same Week 2019		
		Total	Wk Chg	YoY	Total	Wk Chg	YoY	Total	Wk Chg	YoY	Cat	Dog	Total	Cat	Dog	Total
	5/9/2020	9103	-20.1%	-39.0%	8596	-37.2%	-34.8%	17699	-29.4%	-37.0%	11399	13685	25084	14925	13179	28104