

**Week 28: September 19, 2020**

The 24Pet® ShelterWatch Report: COVID-19 Impact report is a weekly gauge of U.S. homeless pet populations in the care of animal welfare organizations.

The COVID-19 Impact Report aggregates data from 1200 animal welfare organizations (“AWOs”) in the United States. It compares the weekly data to data from the same week in 2019.

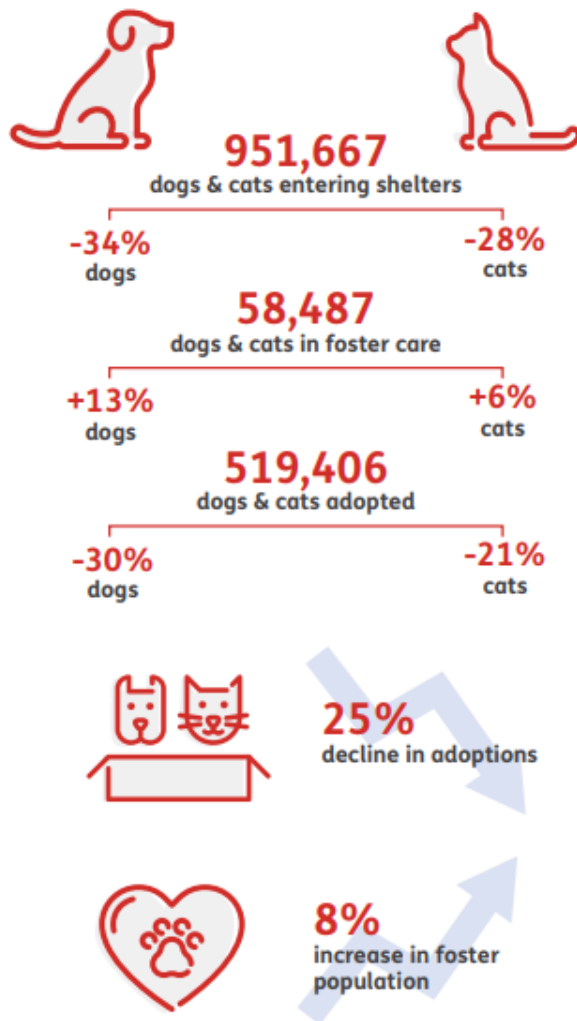
For the purposes here, AWOs are defined as animal control agencies, SPCAs, humane societies and rescue groups. Only data from AWOs operating PetPoint during both January 1, 2019 to current have been included.

## As the world navigates through a new reality, our pet population remains vulnerable and in-need.

Despite temporary closings and reduced shelter capacity, at least 951,667 new animals have arrived in the 1,191 shelters monitored by the 24Pet® ShelterWatch Report since the start of the pandemic. This number is expected to surge in the coming months with an anticipated increase in relinquished and abandoned animals.

March 13 - September 18, 2020 compared to the same period in 2019

### US NATIONAL STATS



### STATS BY STATE

#### CALIFORNIA



#### TEXAS



#### FLORIDA



Pethealth Services (USA) Inc. ("24PetWatch®") strives to provide accurate and up-to-date material on this 24Pet® ShelterWatch Report (the "Report"). 24PetWatch® assumes no responsibility or does not guarantee as to the accuracy or timeliness of the material provided in this Report. Neither 24PetWatch®, its employees, officers, directors, agents, parent companies or subsidiary companies assume any liability or responsibility for any errors or omissions on any information provided within this Report.

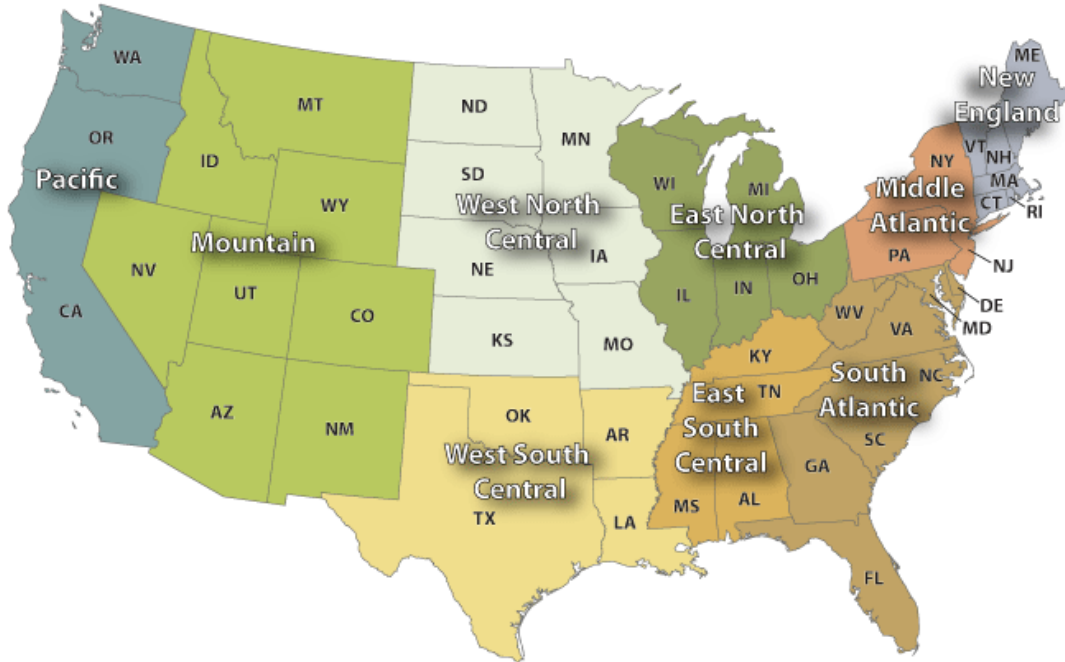
**NATIONAL:**

	Cat		Dog		Total		Same Week 2019		
	Total	YoY	Total	YoY	Total	YoY	Cat	Dog	Total
<b>Intakes</b>									
Intake Operation	Cat		Dog		Total		Same Week 2019		
	Total	YoY	Total	YoY	Total	YoY	Cat	Dog	Total
<b>Total</b>	20301	-15.8%	16103	-30.8%	36404	-23.2%	24119	23268	47387
Owner/Guardian Surrender	5412	-13.8%	3845	-27.5%	9257	-20.1%	6282	5307	11589
Return	488	-28.6%	816	-25.8%	1304	-26.9%	683	1100	1783
Seized / Custody	1125	-13.0%	1890	-36.5%	3015	-29.4%	1293	2977	4270
Stray	10596	-19.6%	6124	-32.5%	16720	-24.8%	13172	9066	22238
Transfer In	2680	-0.3%	3428	-28.9%	6108	-18.6%	2689	4818	7507
<b>Outcomes</b>									
Outcome Operation	Cat		Dog		Total		Same Week 2019		
	Total	YoY	Total	YoY	Total	YoY	Cat	Dog	Total
<b>Total</b>	19357	-16.2%	15976	-29.0%	35333	-22.5%	23100	22497	45597
Adoption	12537	-9.2%	8472	-28.5%	21009	-18.1%	13803	11851	25654
Died	617	-34.5%	105	-30.0%	722	-33.9%	942	150	1092
Euthanasia	2593	-40.5%	1360	-43.3%	3953	-41.5%	4355	2397	6752
Return to Owner/Guardian	700	-34.6%	3020	-27.4%	3720	-28.8%	1070	4157	5227
Transfer Out	2910	-0.7%	3019	-23.4%	5929	-13.7%	2930	3942	6872
<b>Foster Starts</b>									
Week Starting	Cat		Dog		Total		Same Week 2019		
	Total	YoY	Total	YoY	Total	YoY	Cat	Dog	Total
9/19/2020	6577	-1.8%	2586	-15.5%	9163	-6.1%	6697	3062	9759
<b>Total Inventory</b>									
Week Starting	Cat		Dog		Total		Same Week 2019		
	Total	YoY	Total	YoY	Total	YoY	Cat	Dog	Total
9/19/2020	115357	-10.6%	62739	-16.7%	178096	-12.8%	129070	75283	204353
<b>In Foster</b>									
Week Starting	Cat		Dog		Total		Same Week 2019		
	Total	YoY	Total	YoY	Total	YoY	Cat	Dog	Total
9/19/2020	41654	5.0%	16782	12.0%	58436	6.9%	39673	14981	54654
<b>In Shelter</b>									
Week Starting	Cat		Dog		Total		Same Week 2019		
	Total	YoY	Total	YoY	Total	YoY	Cat	Dog	Total
9/19/2020	73703	-17.6%	45957	-23.8%	119660	-20.1%	89397	60302	149699

For more information please contact: Steve Zeidman  
 Senior Vice President, Software Solutions  
 Pethealth Inc.  
[steve.zeidman@Pethealthinc.com](mailto:steve.zeidman@Pethealthinc.com)

REGIONAL:

U.S. Census Divisions



Pacific (AK, CA, HI, OR, WA):

	Cat		Dog		Total		Same Week 2019		
	Total	YoY	Total	YoY	Total	YoY	Cat	Dog	Total
<b>Intakes</b>									
Intake Operation	Cat		Dog		Total		Same Week 2019		
	Total	YoY	Total	YoY	Total	YoY	Cat	Dog	Total
<b>Total</b>	2390	-21.6%	1562	-36.4%	3952	-28.2%	3048	2457	5505
Owner/Guardian Surrender	508	-13.8%	353	-34.1%	861	-23.5%	589	536	1125
Return	46	-40.3%	61	-43.0%	107	-41.8%	77	107	184
Seized / Custody	138	-7.4%	171	-36.7%	309	-26.3%	149	270	419
Stray	1404	-25.2%	792	-31.4%	2196	-27.6%	1878	1155	3033
Transfer In	294	-17.2%	185	-52.4%	479	-35.6%	355	389	744
<b>Outcomes</b>									
Outcome Operation	Cat		Dog		Total		Same Week 2019		
	Total	YoY	Total	YoY	Total	YoY	Cat	Dog	Total
<b>Total</b>	2168	-24.4%	1491	-39.5%	3659	-31.4%	2869	2463	5332
Adoption	1467	-15.4%	713	-42.6%	2180	-26.8%	1734	1243	2977
Died	48	-35.1%	11	-42.1%	59	-36.6%	74	19	93
Euthanasia	239	-55.4%	152	-50.8%	391	-53.7%	536	309	845
Return to Owner/Guardian	83	-47.8%	358	-25.6%	441	-31.1%	159	481	640
Transfer Out	331	-9.6%	257	-37.5%	588	-24.3%	366	411	777
<b>Foster Starts</b>									
Week Starting	Cat		Dog		Total		Same Week 2019		
	Total	YoY	Total	YoY	Total	YoY	Cat	Dog	Total
9/19/2020	1006	-6.2%	223	-37.2%	1229	-13.9%	1073	355	1428
<b>Total Inventory</b>									
Week Starting	Cat		Dog		Total		Same Week 2019		
	Total	YoY	Total	YoY	Total	YoY	Cat	Dog	Total
9/19/2020	12149	-19.0%	4703	-29.4%	16852	-22.2%	14993	6662	21655
<b>In Foster</b>									
Week Starting	Cat		Dog		Total		Same Week 2019		
	Total	YoY	Total	YoY	Total	YoY	Cat	Dog	Total
9/19/2020	5490	-0.0%	1236	-8.8%	6726	-1.8%	5491	1355	6846
<b>In Shelter</b>									
Week Starting	Cat		Dog		Total		Same Week 2019		
	Total	YoY	Total	YoY	Total	YoY	Cat	Dog	Total
9/19/2020	6659	-29.9%	3467	-34.7%	10126	-31.6%	9502	5307	14809

## Mountain (AZ, CO, ID, MT, NM, NV, UT, WY):

	Intake Operation	Cat		Dog		Total		Same Week 2019		
		Total	YoY	Total	YoY	Total	YoY	Cat	Dog	Total
<b>Intakes</b>										
	<b>Total</b>	1909	-24.0%	1842	-29.2%	3751	-26.6%	2512	2601	5113
	Owner/Guardian Surrender	526	-24.1%	586	-27.3%	1112	-25.8%	693	806	1499
	Return	35	-52.1%	86	-36.3%	121	-41.8%	73	135	208
	Seized / Custody	134	27.6%	201	-19.3%	335	-5.4%	105	249	354
	Stray	944	-28.6%	662	-30.2%	1606	-29.3%	1323	948	2271
	Transfer In	270	-15.1%	307	-33.7%	577	-26.1%	318	463	781
<b>Outcomes</b>										
	<b>Total</b>	1859	-27.6%	1774	-30.9%	3633	-29.3%	2569	2568	5137
	Adoption	1306	-27.6%	994	-31.1%	2300	-29.2%	1805	1442	3247
	Died	32	-49.2%	6	-60.0%	38	-51.3%	63	15	78
	Euthanasia	216	-41.6%	185	-27.7%	401	-35.9%	370	256	626
	Return to Owner/Guardian	119	-36.7%	442	-31.8%	561	-32.9%	188	648	836
	Transfer Out	186	30.1%	147	-29.0%	333	-4.9%	143	207	350
<b>Foster Starts</b>										
	<b>Total</b>	852	-23.2%	852	-23.2%	852	-23.2%	834	276	1110
	9/19/2020	635	-23.9%	217	-21.4%	852	-23.2%	834	276	1110
<b>Total Inventory</b>										
	<b>Total</b>	15597	-15.6%	15597	-15.6%	15597	-15.6%	11725	6762	18487
	9/19/2020	9469	-19.2%	6128	-9.4%	15597	-15.6%	11725	6762	18487
<b>In Foster</b>										
	<b>Total</b>	4957	-5.6%	4957	-5.6%	4957	-5.6%	3984	1269	5253
	9/19/2020	3470	-12.9%	1487	17.2%	4957	-5.6%	3984	1269	5253
<b>In Shelter</b>										
	<b>Total</b>	10640	-19.6%	10640	-19.6%	10640	-19.6%	7741	5493	13234
	9/19/2020	5999	-22.5%	4641	-15.5%	10640	-19.6%	7741	5493	13234

## West North Central (IA, KS, MN, MO, ND, NE, SD):

	Intake Operation	Cat		Dog		Total		Same Week 2019		
		Total	YoY	Total	YoY	Total	YoY	Cat	Dog	Total
<b>Intakes</b>										
	<b>Total</b>	1503	-19.8%	1210	-19.8%	2713	-19.8%	1874	1509	3383
	Owner/Guardian Surrender	522	-6.3%	260	-23.5%	782	-12.8%	557	340	897
	Return	56	-17.6%	64	-28.1%	120	-23.6%	68	89	157
	Seized / Custody	44	-58.5%	126	-38.2%	170	-45.2%	106	204	310
	Stray	717	-24.2%	309	-40.3%	1026	-29.9%	946	518	1464
	Transfer In	164	-16.8%	451	26.0%	615	10.8%	197	358	555
<b>Outcomes</b>										
	<b>Total</b>	1371	-22.3%	985	-27.9%	2356	-24.8%	1765	1367	3132
	Adoption	942	-14.1%	592	-30.0%	1534	-21.0%	1096	846	1942
	Died	44	-37.1%	7	-12.5%	51	-34.6%	70	8	78
	Euthanasia	169	-54.0%	80	-29.2%	249	-48.1%	367	113	480
	Return to Owner/Guardian	57	-8.1%	226	-29.4%	283	-25.9%	62	320	382
	Transfer Out	159	-6.5%	80	0.0%	239	-4.4%	170	80	250
<b>Foster Starts</b>										
	<b>Total</b>	522	-11.2%	522	-11.2%	522	-11.2%	389	199	588
	9/19/2020	321	-17.5%	201	1.0%	522	-11.2%	389	199	588
<b>Total Inventory</b>										
	<b>Total</b>	13326	-4.8%	13326	-4.8%	13326	-4.8%	9408	4591	13999
	9/19/2020	9331	-0.8%	3995	-13.0%	13326	-4.8%	9408	4591	13999
<b>In Foster</b>										
	<b>Total</b>	5038	22.7%	5038	22.7%	5038	22.7%	2798	1307	4105
	9/19/2020	3557	27.1%	1481	13.3%	5038	22.7%	2798	1307	4105
<b>In Shelter</b>										
	<b>Total</b>	8288	-16.2%	8288	-16.2%	8288	-16.2%	6610	3284	9894
	9/19/2020	5774	-12.6%	2514	-23.4%	8288	-16.2%	6610	3284	9894



## West South Central (AR, LA, OK, TX):

	Cat		Dog		Total		Same Week 2019		
	Total	YoY	Total	YoY	Total	YoY	Cat	Dog	Total
<b>Intakes</b>									
Intake Operation	Cat		Dog		Total		Same Week 2019		
<b>Total</b>	2831	-18.2%	3460	-33.6%	6291	-27.4%	3460	5207	8667
Owner/Guardian Surrender	550	-22.0%	784	-29.4%	1334	-26.5%	705	1110	1815
Return	54	-23.9%	145	-13.7%	199	-16.7%	71	168	239
Seized / Custody	189	-12.9%	424	-31.2%	613	-26.4%	217	616	833
Stray	1752	-17.5%	1610	-40.1%	3362	-30.1%	2123	2690	4813
Transfer In	286	-16.9%	497	-20.2%	783	-19.0%	344	623	967
<b>Outcomes</b>									
Outcome Operation	Cat		Dog		Total		Same Week 2019		
<b>Total</b>	2236	-26.4%	3430	-31.2%	5666	-29.4%	3039	4984	8023
Adoption	1257	-16.8%	1462	-29.2%	2719	-23.9%	1510	2064	3574
Died	101	-34.0%	37	-5.1%	138	-28.1%	153	39	192
Euthanasia	333	-36.5%	237	-56.2%	570	-46.5%	524	541	1065
Return to Owner/Guardian	103	-58.6%	622	-43.7%	725	-46.5%	249	1105	1354
Transfer Out	442	-26.7%	1072	-13.2%	1514	-17.6%	603	1235	1838
<b>Foster Starts</b>									
Week Starting	Cat		Dog		Total		Same Week 2019		
9/19/2020	876	-6.2%	497	-9.1%	1373	-7.3%	934	547	1481
<b>Total Inventory</b>									
Week Starting	Cat		Dog		Total		Same Week 2019		
9/19/2020	13206	-24.1%	12916	-18.9%	26122	-21.6%	17408	15927	33335
<b>In Foster</b>									
Week Starting	Cat		Dog		Total		Same Week 2019		
9/19/2020	5799	-8.2%	3598	-7.0%	9397	-7.8%	6318	3869	10187
<b>In Shelter</b>									
Week Starting	Cat		Dog		Total		Same Week 2019		
9/19/2020	7407	-33.2%	9318	-22.7%	16725	-27.7%	11090	12058	23148

## East North Central (IL, IN, MI, OH, WI):

	Cat		Dog		Total		Same Week 2019		
	Total	YoY	Total	YoY	Total	YoY	Cat	Dog	Total
<b>Intakes</b>									
Intake Operation	Cat		Dog		Total		Same Week 2019		
<b>Total</b>	3387	-18.3%	2414	-31.5%	5801	-24.4%	4146	3524	7670
Owner/Guardian Surrender	947	-15.0%	510	-34.6%	1457	-23.1%	1114	780	1894
Return	110	-22.0%	171	-9.0%	281	-14.6%	141	188	329
Seized / Custody	150	3.4%	211	-38.1%	361	-25.7%	145	341	486
Stray	1735	-24.7%	773	-35.4%	2508	-28.3%	2303	1196	3499
Transfer In	445	0.5%	749	-26.5%	1194	-18.3%	443	1019	1462
<b>Outcomes</b>									
Outcome Operation	Cat		Dog		Total		Same Week 2019		
<b>Total</b>	3772	-1.6%	2604	-20.7%	6376	-10.4%	3833	3283	7116
Adoption	2681	6.3%	1633	-12.4%	4314	-1.7%	2523	1864	4387
Died	144	-22.2%	14	-50.0%	158	-25.8%	185	28	213
Euthanasia	374	-32.0%	222	-43.2%	596	-36.7%	550	391	941
Return to Owner/Guardian	168	-7.2%	465	-19.7%	633	-16.7%	181	579	760
Transfer Out	405	2.8%	270	-35.9%	675	-17.2%	394	421	815
<b>Foster Starts</b>									
Week Starting	Cat		Dog		Total		Same Week 2019		
9/19/2020	1014	-3.9%	448	-22.0%	1462	-10.3%	1055	574	1629
<b>Total Inventory</b>									
Week Starting	Cat		Dog		Total		Same Week 2019		
9/19/2020	21570	-8.8%	10078	-12.2%	31648	-9.9%	23659	11478	35137
<b>In Foster</b>									
Week Starting	Cat		Dog		Total		Same Week 2019		
9/19/2020	6394	4.6%	3294	43.2%	9688	15.2%	6112	2300	8412
<b>In Shelter</b>									
Week Starting	Cat		Dog		Total		Same Week 2019		
9/19/2020	15176	-13.5%	6784	-26.1%	21960	-17.8%	17547	9178	26725

## East South Central (AL, KY, MS, TN):

Intakes	Intake Operation	Cat		Dog		Total	
		Total	YoY	Total	YoY	Total	YoY
<b>Total</b>		1052	-10.0%	1030	-18.8%	2082	-14.6%
	Owner/Guardian Surrender	422	-4.3%	376	-9.8%	798	-7.0%
	Return	31	63.2%	48	-20.0%	79	0.0%
	Seized / Custody	50	42.9%	55	-35.3%	105	-12.5%
	Stray	492	-10.5%	392	-25.8%	884	-18.0%
	Transfer In	57	-54.0%	159	-11.2%	216	-28.7%

### Same Week 2019

Cat	Dog	Total
1169	1269	2438
441	417	858
19	60	79
35	85	120
550	528	1078
124	179	303

Outcomes	Outcome Operation	Cat		Dog		Total	
		Total	YoY	Total	YoY	Total	YoY
<b>Total</b>		820	-31.8%	941	-38.1%	1761	-35.4%
	Adoption	480	-5.5%	412	-26.0%	892	-16.2%
	Died	21	-54.3%	2	-33.3%	23	-53.1%
	Euthanasia	237	-49.3%	75	-49.3%	312	-49.3%
	Return to Owner/Guardian	7	-46.2%	125	-19.4%	132	-21.4%
	Transfer Out	75	-55.6%	327	-50.3%	402	-51.4%

### Same Week 2019

Cat	Dog	Total
1203	1521	2724
508	557	1065
46	3	49
467	148	615
13	155	168
169	658	827

Foster Starts	Week Starting	Cat		Dog		Total	
		Total	YoY	Total	YoY	Total	YoY
	9/19/2020	236	10.8%	177	-35.4%	413	-15.2%

### Same Week 2019

Cat	Dog	Total
213	274	487

Total Inventory	Week Starting	Cat		Dog		Total	
		Total	YoY	Total	YoY	Total	YoY
	9/19/2020	6503	8.8%	5382	-12.4%	11885	-1.9%

### Same Week 2019

Cat	Dog	Total
5979	6142	12121

In Foster	Week Starting	Cat		Dog		Total	
		Total	YoY	Total	YoY	Total	YoY
	9/19/2020	1647	22.0%	1094	-0.6%	2741	11.8%

### Same Week 2019

Cat	Dog	Total
1350	1101	2451

In Shelter	Week Starting	Cat		Dog		Total	
		Total	YoY	Total	YoY	Total	YoY
	9/19/2020	4856	4.9%	4288	-14.9%	9144	-5.4%

### Same Week 2019

Cat	Dog	Total
4629	5041	9670

## New England (CT, MA, ME, NH, RI, VT):

Intakes	Intake Operation	Cat		Dog		Total	
		Total	YoY	Total	YoY	Total	YoY
<b>Total</b>		647	-26.7%	352	-49.8%	999	-36.9%
	Owner/Guardian Surrender	233	-32.7%	75	-37.5%	308	-33.9%
	Return	11	-71.8%	17	-54.1%	28	-63.2%
	Seized / Custody	10	-44.4%	12	-64.7%	22	-57.7%
	Stray	221	-33.8%	130	-14.5%	351	-27.8%
	Transfer In	172	17.8%	118	-67.0%	290	-42.5%

### Same Week 2019

Cat	Dog	Total
883	701	1584
346	120	466
39	37	76
18	34	52
334	152	486
146	358	504

Outcomes	Outcome Operation	Cat		Dog		Total	
		Total	YoY	Total	YoY	Total	YoY
<b>Total</b>		691	-26.0%	410	-28.6%	1101	-27.0%
	Adoption	595	-23.4%	309	-28.1%	904	-25.1%
	Died	12	9.1%		-100.0%	12	-7.7%
	Euthanasia	48	-35.1%	27	-52.6%	75	-42.7%
	Return to Owner/Guardian	29	3.6%	72	-4.0%	101	-1.9%
	Transfer Out	7	-84.1%	2	-80.0%	9	-83.3%

### Same Week 2019

Cat	Dog	Total
934	574	1508
777	430	1207
11	2	13
74	57	131
28	75	103
44	10	54

Foster Starts	Week Starting	Cat		Dog		Total	
		Total	YoY	Total	YoY	Total	YoY
	9/19/2020	166	-38.3%	61	-43.0%	227	-39.6%

### Same Week 2019

Cat	Dog	Total
269	107	376

Total Inventory	Week Starting	Cat		Dog		Total	
		Total	YoY	Total	YoY	Total	YoY
	9/19/2020	3934	-20.3%	1423	-22.8%	5357	-21.0%

### Same Week 2019

Cat	Dog	Total
4934	1844	6778

In Foster	Week Starting	Cat		Dog		Total	
		Total	YoY	Total	YoY	Total	YoY
	9/19/2020	1459	-11.6%	397	-8.1%	1856	-10.9%

### Same Week 2019

Cat	Dog	Total
1651	432	2083

In Shelter	Week Starting	Cat		Dog		Total	
		Total	YoY	Total	YoY	Total	YoY
	9/19/2020	2475	-24.6%	1026	-27.3%	3501	-25.4%

### Same Week 2019

Cat	Dog	Total
3283	1412	4695

## Middle Atlantic (NJ, NY, PA):

Intakes	Intake Operation	Cat		Dog		Total		Same Week 2019		
		Total	YoY	Total	YoY	Total	YoY	Cat	Dog	Total
<b>Total</b>		1598	-12.9%	906	-27.8%	2504	-19.0%	1835	1255	3090
Owner/Guardian Surrender		466	6.2%	166	-32.8%	632	-7.9%	439	247	686
Return		37	-47.9%	64	-23.8%	101	-34.8%	71	84	155
Seized / Custody		31	-61.3%	67	-19.3%	98	-39.9%	80	83	163
Stray		981	-4.2%	255	-36.7%	1236	-13.4%	1024	403	1427
Transfer In		83	-62.4%	354	-19.2%	437	-33.7%	221	438	659

Outcomes	Outcome Operation	Cat		Dog		Total		Same Week 2019		
		Total	YoY	Total	YoY	Total	YoY	Cat	Dog	Total
<b>Total</b>		1598	-7.8%	933	-22.2%	2531	-13.7%	1734	1199	2933
Adoption		1107	-0.7%	690	-18.1%	1797	-8.2%	1115	842	1957
Died		63	-37.0%	5	-28.6%	68	-36.4%	100	7	107
Euthanasia		227	-18.1%	79	-21.0%	306	-18.8%	277	100	377
Return to Owner/Guardian		31	-48.3%	127	-38.3%	158	-40.6%	60	206	266
Transfer Out		170	-6.6%	32	-27.3%	202	-10.6%	182	44	226

Foster Starts	Week Starting	Cat		Dog		Total		Same Week 2019		
		Total	YoY	Total	YoY	Total	YoY	Cat	Dog	Total
	9/19/2020	564	-14.9%	213	25.3%	777	-6.7%	663	170	833

Total Inventory	Week Starting	Cat		Dog		Total		Same Week 2019		
		Total	YoY	Total	YoY	Total	YoY	Cat	Dog	Total
	9/19/2020	12433	-4.4%	4260	-13.6%	16693	-6.9%	13001	4929	17930

In Foster	Week Starting	Cat		Dog		Total		Same Week 2019		
		Total	YoY	Total	YoY	Total	YoY	Cat	Dog	Total
	9/19/2020	4494	11.2%	1160	18.5%	5654	12.6%	4043	979	5022

In Shelter	Week Starting	Cat		Dog		Total		Same Week 2019		
		Total	YoY	Total	YoY	Total	YoY	Cat	Dog	Total
	9/19/2020	7939	-11.4%	3100	-21.5%	11039	-14.5%	8958	3950	12908

## South Atlantic (DE, FL, GA, MD, NC, SC, VA, WV):

Intakes	Intake Operation	Cat		Dog		Total		Same Week 2019		
		Total	YoY	Total	YoY	Total	YoY	Cat	Dog	Total
<b>Total</b>		4984	-4.0%	3327	-29.9%	8311	-16.4%	5192	4745	9937
Owner/Guardian Surrender		1238	-11.4%	735	-22.7%	1973	-16.0%	1398	951	2349
Return		108	-12.9%	160	-31.0%	268	-24.7%	124	232	356
Seized / Custody		379	-13.5%	623	-43.1%	1002	-34.6%	438	1095	1533
Stray		2350	-12.7%	1201	-18.6%	3551	-14.8%	2691	1476	4167
Transfer In		909	68.0%	608	-38.6%	1517	-1.0%	541	991	1532

Outcomes	Outcome Operation	Cat		Dog		Total		Same Week 2019		
		Total	YoY	Total	YoY	Total	YoY	Cat	Dog	Total
<b>Total</b>		4842	-6.1%	3408	-24.9%	8250	-14.9%	5154	4538	9692
Adoption		2702	-1.2%	1667	-35.0%	4369	-17.5%	2735	2563	5298
Died		152	-36.7%	23	-20.7%	175	-34.9%	240	29	269
Euthanasia		750	-37.0%	303	-37.1%	1053	-37.0%	1190	482	1672
Return to Owner/Guardian		103	-20.8%	583	-0.9%	686	-4.5%	130	588	718
Transfer Out		1135	32.1%	832	-5.0%	1967	13.4%	859	876	1735

Foster Starts	Week Starting	Cat		Dog		Total		Same Week 2019		
		Total	YoY	Total	YoY	Total	YoY	Cat	Dog	Total
	9/19/2020	1759	38.8%	549	-2.0%	2308	26.3%	1267	560	1827

Total Inventory	Week Starting	Cat		Dog		Total		Same Week 2019		
		Total	YoY	Total	YoY	Total	YoY	Cat	Dog	Total
	9/19/2020	26762	-4.3%	13854	-18.3%	40616	-9.6%	27963	16948	44911

In Foster	Week Starting	Cat		Dog		Total		Same Week 2019		
		Total	YoY	Total	YoY	Total	YoY	Cat	Dog	Total
	9/19/2020	9344	17.9%	3035	28.1%	12379	20.2%	7926	2369	10295

In Shelter	Week Starting	Cat		Dog		Total		Same Week 2019		
		Total	YoY	Total	YoY	Total	YoY	Cat	Dog	Total
	9/19/2020	17418	-13.1%	10819	-25.8%	28237	-18.4%	20037	14579	34616