

**Week 20: July 24, 2020**

The 24Pet® ShelterWatch Report: COVID-19 Impact report is a weekly gauge of U.S. homeless pet populations in the care of animal welfare organizations.

The COVID-19 Impact Report aggregates data from 1200 animal welfare organizations (“AWOs”) in the United States. It compares the weekly data to data from the week before the federal declaration (March 7-13) and same week in 2019.

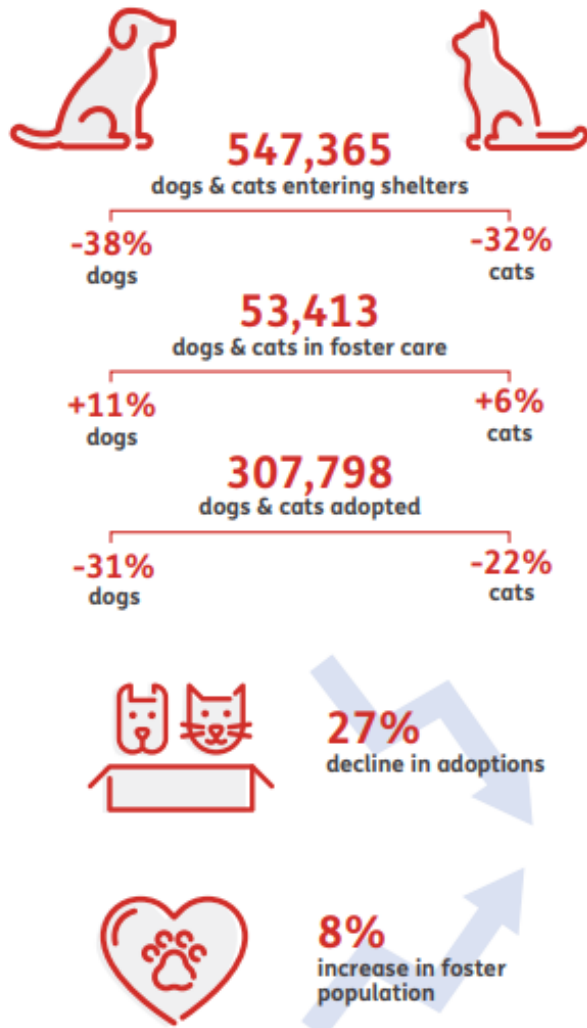
For the purposes here, AWOs are defined as animal control agencies, SPCAs, humane societies and rescue groups. Only data from AWOs operating PetPoint during both January 1, 2019 to current have been included. For commentary see: <https://pethealth.force.com/community/s/blog>

## As the world navigates through a new reality, our pet population remains vulnerable and in-need.

Despite temporary closings and reduced shelter capacity, at least 547,365 new animals have arrived in the 1,191 shelters monitored by the 24Pet® ShelterWatch Report since the start of the pandemic. This number is expected to surge in the coming months with an anticipated increase in relinquished and abandoned animals.

March 13 - July 31, 2020 compared to the same period in 2019

### US NATIONAL STATS



### STATS BY STATE

#### CALIFORNIA

**-38%**  
dogs & cats entering shelters



#### TEXAS

**-37%**  
dogs & cats entering shelters



#### FLORIDA

**-36%**  
dogs & cats entering shelters



Pethealth Services (USA) Inc. ("24PetWatch") strives to provide accurate and up-to-date material on this 24Pet® ShelterWatch Report (the "Report"). 24PetWatch® assumes no responsibility or does not guarantee as to the accuracy or timeliness of the material provided in this Report. Neither 24PetWatch®, its employees, officers, directors, agents, parent companies or subsidiary companies assume any liability or responsibility for any errors or omissions on any information provided within this Report.

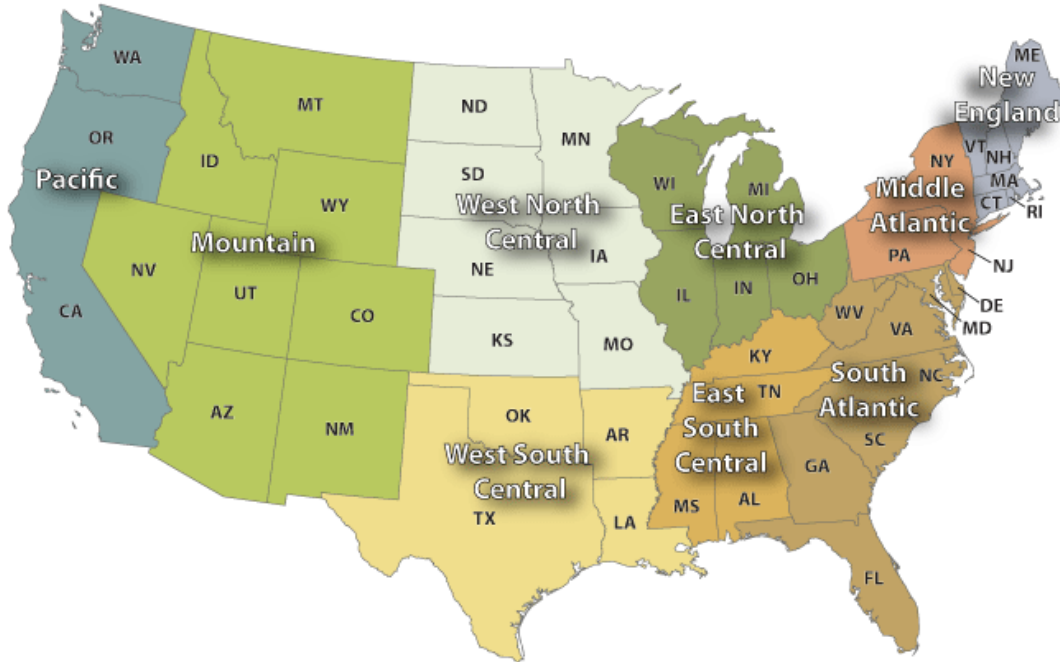
**NATIONAL:**

	Intake Operation	Cat			Dog			Total			March 7-13, 2020			Same Week 2019		
		Total	Wk Chg	YoY	Total	Wk Chg	YoY	Total	Wk Chg	YoY	Cat	Dog	Total	Cat	Dog	Total
<b>Intakes</b>	<b>Total</b>	17597	32.8%	-24.3%	14877	-23.8%	-27.4%	32474	-0.9%	-25.7%	13249	19532	32781	23243	20482	43725
	Owner/Guardian Surrender	5088	19.3%	-21.2%	3710	-26.5%	-29.5%	8798	-5.5%	-24.9%	4264	5049	9313	6456	5264	11720
	Return	495	-17.8%	-34.7%	730	-31.4%	-31.9%	1225	-26.5%	-33.1%	602	1064	1666	758	1072	1830
	Seized / Custody	946	17.4%	-32.2%	1659	-22.6%	-35.6%	2605	-11.7%	-34.4%	806	2144	2950	1395	2576	3971
	Stray	8901	56.4%	-26.1%	5164	-21.9%	-29.4%	14065	14.3%	-27.3%	5691	6612	12303	12040	7313	19353
	Transfer In	2167	14.9%	-16.5%	3614	-22.5%	-15.1%	5781	-11.7%	-15.6%	1886	4663	6549	2594	4257	6851
											March 7-13, 2020			Same Week 2019		
<b>Outcomes</b>	<b>Outcome Operation</b>	<b>Total</b>	<b>Wk Chg</b>	<b>YoY</b>	<b>Total</b>	<b>Wk Chg</b>	<b>YoY</b>	<b>Total</b>	<b>Wk Chg</b>	<b>YoY</b>	<b>Cat</b>	<b>Dog</b>	<b>Total</b>	<b>Cat</b>	<b>Dog</b>	<b>Total</b>
	<b>Total</b>	17433	41.4%	-24.5%	14193	-28.4%	-30.0%	31626	-1.6%	-27.0%	12325	19816	32141	23079	20265	43344
	Adoption	11702	47.3%	-15.1%	7755	-29.3%	-29.0%	19457	2.9%	-21.2%	7945	10971	18916	13778	10928	24706
	Died	484	145.7%	-49.5%	94	-40.5%	-44.0%	578	62.8%	-48.7%	197	158	355	959	168	1127
	Euthanasia	2331	34.7%	-53.8%	1271	-33.4%	-47.1%	3602	-1.0%	-51.7%	1731	1909	3640	5048	2404	7452
	Return to Owner/Guardian	553	-1.8%	-34.5%	2412	-26.0%	-28.4%	2965	-22.4%	-29.6%	563	3260	3823	844	3368	4212
	Transfer Out	2363	25.1%	-3.6%	2661	-24.4%	-21.7%	5024	-7.1%	-14.1%	1889	3518	5407	2450	3397	5847
											March 7-13, 2020			Same Week 2019		
<b>Foster Starts</b>	<b>Week Starting</b>	<b>Total</b>	<b>Wk Chg</b>	<b>YoY</b>	<b>Total</b>	<b>Wk Chg</b>	<b>YoY</b>	<b>Total</b>	<b>Wk Chg</b>	<b>YoY</b>	<b>Cat</b>	<b>Dog</b>	<b>Total</b>	<b>Cat</b>	<b>Dog</b>	<b>Total</b>
	7/25/2020	6385	141.9%	-8.2%	2988	-7.7%	-4.5%	9373	59.5%	-7.1%	2640	3237	5877	6956	3128	10084
<b>Total Inventory</b>	<b>Week Starting</b>	<b>Total</b>	<b>Wk Chg</b>	<b>YoY</b>	<b>Total</b>	<b>Wk Chg</b>	<b>YoY</b>	<b>Total</b>	<b>Wk Chg</b>	<b>YoY</b>	<b>Cat</b>	<b>Dog</b>	<b>Total</b>	<b>Cat</b>	<b>Dog</b>	<b>Total</b>
	7/25/2020	104369	61.2%	-14.6%	56317	-20.7%	-21.9%	160686	18.4%	-17.3%	64763	70977	135740	122234	72151	194385
<b>In Foster</b>	<b>Week Starting</b>	<b>Total</b>	<b>Wk Chg</b>	<b>YoY</b>	<b>Total</b>	<b>Wk Chg</b>	<b>YoY</b>	<b>Total</b>	<b>Wk Chg</b>	<b>YoY</b>	<b>Cat</b>	<b>Dog</b>	<b>Total</b>	<b>Cat</b>	<b>Dog</b>	<b>Total</b>
	7/25/2020	37874	144.5%	6.0%	15536	-3.5%	11.2%	53410	69.1%	7.5%	15488	16095	31583	35722	13969	49691
<b>In Shelter</b>	<b>Week Starting</b>	<b>Total</b>	<b>Wk Chg</b>	<b>YoY</b>	<b>Total</b>	<b>Wk Chg</b>	<b>YoY</b>	<b>Total</b>	<b>Wk Chg</b>	<b>YoY</b>	<b>Cat</b>	<b>Dog</b>	<b>Total</b>	<b>Cat</b>	<b>Dog</b>	<b>Total</b>
	7/25/2020	66495	34.9%	-23.1%	40781	-25.7%	-29.9%	107276	3.0%	-25.9%	49275	54882	104157	86512	58182	144694

For more information please contact: Steve Zeidman  
 Senior Vice President, Software Solutions  
 Pethealth Inc.  
[steve.zeidman@Pethealthinc.com](mailto:steve.zeidman@Pethealthinc.com)

REGIONAL:

U.S. Census Divisions



Pacific (AK, CA, HI, OR, WA):

Intakes	Intake Operation	Cat			Dog			Total		
		Total	Wk Chg	YoY	Total	Wk Chg	YoY	Total	Wk Chg	YoY
<b>Total</b>		1973	36.0%	-22.0%	1329	-33.4%	-35.9%	3302	-4.2%	-28.3%
	Owner/Guardian Surrender	484	19.5%	-6.4%	363	-27.7%	-25.2%	847	-6.6%	-15.5%
	Return	47	-11.3%	-41.3%	59	-41.6%	-23.4%	106	-31.2%	-32.5%
	Seized / Custody	59	-35.9%	-63.4%	119	-43.9%	-61.6%	178	-41.4%	-62.2%
	Stray	1046	44.9%	-22.9%	613	-15.2%	-27.4%	1659	14.8%	-24.6%
	Transfer In	337	88.3%	-19.0%	175	-61.7%	-51.1%	512	-19.5%	-33.9%

March 7-13, 2020			Same Week 2019		
Cat	Dog	Total	Cat	Dog	Total
1451	1995	3446	2531	2074	4605
405	502	907	517	485	1002
53	101	154	80	77	157
92	212	304	161	310	471
722	723	1445	1357	844	2201
179	457	636	416	358	774

Outcomes	Outcome Operation	Cat			Dog			Total		
		Total	Wk Chg	YoY	Total	Wk Chg	YoY	Total	Wk Chg	YoY
<b>Total</b>		2038	52.7%	-23.9%	1282	-34.9%	-38.7%	3320	0.5%	-30.4%
	Adoption	1327	56.9%	-18.5%	644	-35.9%	-39.6%	1971	6.5%	-26.8%
	Died	49	308.3%	-24.6%	9	-10.0%	-18.2%	58	163.6%	-23.7%
	Euthanasia	264	-0.8%	-51.5%	139	-43.7%	-48.9%	403	-21.4%	-50.6%
	Return to Owner/Guardian	77	-3.8%	-9.4%	266	-19.1%	-25.7%	343	-16.1%	-22.6%
	Transfer Out	321	145.0%	-9.6%	224	-41.1%	-41.8%	545	6.7%	-26.4%

March 7-13, 2020			Same Week 2019		
Cat	Dog	Total	Cat	Dog	Total
1335	1970	3305	2677	2092	4769
846	1004	1850	1628	1066	2694
12	10	22	65	11	76
266	247	513	544	272	816
80	329	409	85	358	443
131	380	511	355	385	740

Foster Starts	Week Starting	Cat			Dog			Total		
		Total	Wk Chg	YoY	Total	Wk Chg	YoY	Total	Wk Chg	YoY
	7/25/2020	817	176.9%	-4.8%	232	-36.4%	-29.3%	1049	58.9%	-11.6%

March 7-13, 2020			Same Week 2019		
Cat	Dog	Total	Cat	Dog	Total
295	365	660	858	328	1186

Total Inventory	Week Starting	Cat			Dog			Total		
		Total	Wk Chg	YoY	Total	Wk Chg	YoY	Total	Wk Chg	YoY
	7/25/2020	11126	68.8%	-13.5%	4300	-25.3%	-29.0%	15426	25.0%	-18.4%

March 7, 2020			Same Week 2019		
Cat	Dog	Total	Cat	Dog	Total
6591	5753	12344	12857	6053	18910

In Foster	Week Starting	Cat			Dog			Total		
		Total	Wk Chg	YoY	Total	Wk Chg	YoY	Total	Wk Chg	YoY
	7/25/2020	4784	184.1%	5.0%	1155	-12.6%	0.9%	5939	97.6%	4.2%

March 7, 2020			Same Week 2019		
Cat	Dog	Total	Cat	Dog	Total
1684	1321	3005	4556	1145	5701

In Shelter	Week Starting	Cat			Dog			Total		
		Total	Wk Chg	YoY	Total	Wk Chg	YoY	Total	Wk Chg	YoY
	7/25/2020	6342	29.2%	-23.6%	3145	-29.0%	-35.9%	9487	1.6%	-28.2%

March 7, 2020			Same Week 2019		
Cat	Dog	Total	Cat	Dog	Total
4907	4432	9339	8301	4908	13209









## East South Central (AL, KY, MS, TN):

Intakes	Intake Operation	Cat			Dog			Total			March 7-13, 2020			Same Week 2019		
		Total	Wk Chg	YoY	Total	Wk Chg	YoY	Total	Wk Chg	YoY	Cat	Dog	Total	Cat	Dog	Total
<b>Total</b>		907	80.3%	-33.6%	1022	-21.7%	-34.1%	1929	6.6%	-33.9%	503	1306	1809	1366	1552	2918
Owner/Guardian Surrender		377	78.7%	-31.7%	325	-38.9%	-45.8%	702	-5.5%	-39.1%	211	532	743	552	600	1152
Return		22	-12.0%	-42.1%	50	13.6%	-9.1%	72	4.3%	-22.6%	25	44	69	38	55	93
Seized / Custody		25	4.2%	-68.4%	51	-25.0%	-20.3%	76	-17.4%	-46.9%	24	68	92	79	64	143
Stray		411	115.2%	-33.9%	395	-15.6%	-30.8%	806	22.3%	-32.4%	191	468	659	622	571	1193
Transfer In		72	38.5%	-4.0%	201	3.6%	-23.3%	273	11.0%	-19.0%	52	194	246	75	262	337

Outcomes	Outcome Operation	Cat			Dog			Total			March 7-13, 2020			Same Week 2019		
		Total	Wk Chg	YoY	Total	Wk Chg	YoY	Total	Wk Chg	YoY	Cat	Dog	Total	Cat	Dog	Total
<b>Total</b>		963	86.3%	-42.6%	1083	-22.4%	-32.6%	2046	7.0%	-37.7%	517	1395	1912	1677	1607	3284
Adoption		497	53.9%	-24.1%	395	-21.5%	-34.6%	892	8.0%	-29.2%	323	503	826	655	604	1259
Died		22	1000.0%	-60.7%	21	90.9%	90.9%	43	230.8%	-35.8%	2	11	13	56	11	67
Euthanasia		259	191.0%	-62.7%	102	-43.6%	-52.1%	361	33.7%	-60.2%	89	181	270	695	213	908
Return to Owner/Guardian		13	8.3%	-35.0%	106	-22.1%	-15.9%	119	-19.6%	-18.5%	12	136	148	20	126	146
Transfer Out		172	89.0%	-31.5%	459	-18.6%	-29.7%	631	-3.7%	-30.2%	91	564	655	251	653	904

Foster Starts	Week Starting	Cat			Dog			Total			March 7-13, 2020			Same Week 2019		
		Total	Wk Chg	YoY	Total	Wk Chg	YoY	Total	Wk Chg	YoY	Cat	Dog	Total	Cat	Dog	Total
	7/25/2020	265	253.3%	36.6%	184	-18.2%	-34.1%	449	49.7%	-5.1%	75	225	300	194	279	473

Total Inventory	Week Starting	Cat			Dog			Total			March 7, 2020			Same Week 2019		
		Total	Wk Chg	YoY	Total	Wk Chg	YoY	Total	Wk Chg	YoY	Cat	Dog	Total	Cat	Dog	Total
	7/25/2020	6065	82.3%	4.2%	5456	-11.3%	-12.6%	11521	21.5%	-4.5%	3327	6154	9481	5822	6245	12067

In Foster	Week Starting	Cat			Dog			Total			March 7, 2020			Same Week 2019		
		Total	Wk Chg	YoY	Total	Wk Chg	YoY	Total	Wk Chg	YoY	Cat	Dog	Total	Cat	Dog	Total
	7/25/2020	1576	179.4%	16.1%	1024	-18.0%	-4.7%	2600	43.4%	7.0%	564	1249	1813	1357	1074	2431

In Shelter	Week Starting	Cat			Dog			Total			March 7, 2020			Same Week 2019		
		Total	Wk Chg	YoY	Total	Wk Chg	YoY	Total	Wk Chg	YoY	Cat	Dog	Total	Cat	Dog	Total
	7/25/2020	4489	62.5%	0.5%	4432	-9.6%	-14.3%	8921	16.3%	-7.4%	2763	4905	7668	4465	5171	9636

## New England (CT, MA, ME, NH, RI, VT):

Intakes	Intake Operation	Cat			Dog			Total			March 7-13, 2020			Same Week 2019		
		Total	Wk Chg	YoY	Total	Wk Chg	YoY	Total	Wk Chg	YoY	Cat	Dog	Total	Cat	Dog	Total
<b>Total</b>		546	-6.8%	-36.7%	390	-27.2%	-29.2%	936	-16.6%	-33.8%	586	536	1122	862	551	1413
Owner/Guardian Surrender		169	-20.7%	-48.3%	63	-11.3%	-42.7%	232	-18.3%	-46.9%	213	71	284	327	110	437
Return		15	-44.4%	-66.7%	19	-45.7%	-38.7%	34	-45.2%	-55.3%	27	35	62	45	31	76
Seized / Custody		8	60.0%	300.0%	17	-5.6%	54.5%	25	8.7%	92.3%	5	18	23	2	11	13
Stray		150	17.2%	-43.4%	112	13.1%	9.8%	262	15.4%	-28.6%	128	99	227	265	102	367
Transfer In		204	-4.2%	-8.5%	179	-42.8%	-39.7%	383	-27.2%	-26.3%	213	313	526	223	297	520

Outcomes	Outcome Operation	Cat			Dog			Total			March 7-13, 2020			Same Week 2019		
		Total	Wk Chg	YoY	Total	Wk Chg	YoY	Total	Wk Chg	YoY	Cat	Dog	Total	Cat	Dog	Total
<b>Total</b>		546	17.9%	-32.5%	392	-16.8%	-29.1%	938	0.4%	-31.1%	463	471	934	809	553	1362
Adoption		453	13.0%	-34.1%	307	-19.8%	-30.5%	760	-3.1%	-32.7%	401	383	784	687	442	1129
Died		11	37.5%	-21.4%	1	0.0%	0.0%	12	33.3%	-20.0%	8	1	9	14	1	15
Euthanasia		24	-20.0%	-63.1%	24	20.0%	-42.9%	48	-4.0%	-55.1%	30	20	50	65	42	107
Return to Owner/Guardian		33	135.7%	50.0%	56	12.0%	0.0%	89	39.1%	14.1%	14	50	64	22	56	78
Transfer Out		25	150.0%	19.0%	4	-76.5%	-66.7%	29	7.4%	-12.1%	10	17	27	21	12	33

Foster Starts	Week Starting	Cat			Dog			Total			March 7-13, 2020			Same Week 2019		
		Total	Wk Chg	YoY	Total	Wk Chg	YoY	Total	Wk Chg	YoY	Cat	Dog	Total	Cat	Dog	Total
	7/25/2020	163	56.7%	-41.2%	81	22.7%	-8.0%	244	43.5%	-33.2%	104	66	170	277	88	365

Total Inventory	Week Starting	Cat			Dog			Total			March 7, 2020			Same Week 2019		
		Total	Wk Chg	YoY	Total	Wk Chg	YoY	Total	Wk Chg	YoY	Cat	Dog	Total	Cat	Dog	Total
	7/25/2020	2801	27.2%	-32.2%	1240	-24.4%	-31.6%	4041	5.2%	-32.0%	2202	1640	3842	4131	1812	5943

In Foster	Week Starting	Cat			Dog			Total			March 7, 2020			Same Week 2019		
		Total	Wk Chg	YoY	Total	Wk Chg	YoY	Total	Wk Chg	YoY	Cat	Dog	Total	Cat	Dog	Total
	7/25/2020	931	69.3%	-22.4%	356	-6.3%	-32.4%	1287	38.4%	-25.4%	550	380	930	1199	527	1726

In Shelter	Week Starting	Cat			Dog			Total			March 7, 2020			Same Week 2019		
		Total	Wk Chg	YoY	Total	Wk Chg	YoY	Total	Wk Chg	YoY	Cat	Dog	Total	Cat	Dog	Total
	7/25/2020	1870	13.2%	-36.2%	884	-29.8%	-31.2%	2754	-5.4%	-34.7%	1652	1260	2912	2932	1285	4217

## Middle Atlantic (NJ, NY, PA):

	Cat			Dog			Total			March 7-13, 2020			Same Week 2019		
	Total	Wk Chg	YoY	Total	Wk Chg	YoY	Total	Wk Chg	YoY	Cat	Dog	Total	Cat	Dog	Total
<b>Intakes</b>															
Intake Operation															
<b>Total</b>	1534	11.8%	-33.3%	1052	-24.9%	-25.0%	2586	-6.7%	-30.2%	1372	1400	2772	2301	1402	3703
Owner/Guardian Surrender	431	-5.7%	-30.9%	235	-30.7%	-26.6%	666	-16.3%	-29.4%	457	339	796	624	320	944
Return	57	-30.5%	-43.6%	50	-46.8%	-56.9%	107	-39.2%	-50.7%	82	94	176	101	116	217
Seized / Custody	46	-4.2%	-57.0%	70	9.4%	-26.3%	116	3.6%	-42.6%	48	64	112	107	95	202
Stray	852	34.8%	-34.3%	264	-38.3%	-43.5%	1116	5.3%	-36.7%	632	428	1060	1296	467	1763
Transfer In	148	-3.3%	-14.5%	433	-8.8%	7.2%	581	-7.5%	0.7%	153	475	628	173	404	577
<b>Outcomes</b>															
Outcome Operation															
<b>Total</b>	1584	23.2%	-28.7%	979	-27.4%	-26.9%	2563	-2.7%	-28.0%	1286	1348	2634	2222	1339	3561
Adoption	1109	26.3%	-22.0%	699	-27.9%	-20.9%	1808	-2.1%	-21.6%	878	969	1847	1421	884	2305
Died	50	61.3%	-52.4%	5	66.7%	-64.3%	55	61.8%	-53.8%	31	3	34	105	14	119
Euthanasia	233	92.6%	-34.6%	85	-14.1%	-35.6%	318	44.5%	-34.8%	121	99	220	356	132	488
Return to Owner/Guardian	24	-17.2%	-31.4%	166	-20.6%	-29.1%	190	-20.2%	-29.4%	29	209	238	35	234	269
Transfer Out	168	-26.0%	-44.9%	24	-64.7%	-68.0%	192	-34.9%	-49.5%	227	68	295	305	75	380
<b>Foster Starts</b>															
Week Starting															
7/25/2020	650	138.1%	-18.3%	198	-11.2%	-2.0%	848	71.0%	-15.0%	273	223	496	796	202	998
<b>Total Inventory</b>															
Week Starting															
7/25/2020	11562	63.2%	-17.0%	4097	-18.6%	-24.4%	15659	29.2%	-19.1%	7085	5035	12120	13927	5418	19345
<b>In Foster</b>															
Week Starting															
7/25/2020	4468	160.5%	0.8%	1209	15.7%	23.1%	5677	105.7%	4.9%	1715	1045	2760	4432	982	5414
<b>In Shelter</b>															
Week Starting															
7/25/2020	7094	32.1%	-25.3%	2888	-27.6%	-34.9%	9982	6.6%	-28.3%	5370	3990	9360	9495	4436	13931

## South Atlantic (DE, FL, GA, MD, NC, SC, VA, WV):

	Cat			Dog			Total			March 7-13, 2020			Same Week 2019		
	Total	Wk Chg	YoY	Total	Wk Chg	YoY	Total	Wk Chg	YoY	Cat	Dog	Total	Cat	Dog	Total
<b>Intakes</b>															
Intake Operation															
<b>Total</b>	4097	31.9%	-21.4%	3053	-26.6%	-31.1%	7150	-1.5%	-25.8%	3105	4157	7262	5211	4429	9640
Owner/Guardian Surrender	1238	42.8%	-17.6%	839	-22.0%	-23.5%	2077	6.9%	-20.1%	867	1076	1943	1503	1097	2600
Return	101	-3.8%	-27.3%	125	-32.4%	-41.0%	226	-22.1%	-35.6%	105	185	290	139	212	351
Seized / Custody	379	27.6%	-20.5%	521	-23.8%	-34.2%	900	-8.3%	-29.1%	297	684	981	477	792	1269
Stray	1981	55.6%	-22.8%	1127	-12.3%	-27.6%	3108	21.5%	-24.6%	1273	1285	2558	2567	1556	4123
Transfer In	398	-29.3%	-24.2%	441	-52.4%	-42.9%	839	-43.7%	-35.3%	563	927	1490	525	772	1297
<b>Outcomes</b>															
Outcome Operation															
<b>Total</b>	4254	42.9%	-18.9%	3006	-27.8%	-32.7%	7260	1.7%	-25.3%	2976	4161	7137	5246	4468	9714
Adoption	2655	58.7%	-8.9%	1565	-27.3%	-31.5%	4220	10.3%	-18.8%	1673	2152	3825	2913	2284	5197
Died	157	220.4%	-22.7%	14	-58.8%	-72.0%	171	106.0%	-32.4%	49	34	83	203	50	253
Euthanasia	636	26.9%	-53.6%	262	-38.6%	-53.2%	898	-3.2%	-53.5%	501	427	928	1370	560	1930
Return to Owner/Guardian	52	-28.8%	-47.5%	441	-31.0%	-30.6%	493	-30.8%	-32.8%	73	639	712	99	635	734
Transfer Out	754	10.9%	14.1%	724	-20.4%	-22.9%	1478	-7.0%	-7.6%	680	909	1589	661	939	1600
<b>Foster Starts</b>															
Week Starting															
7/25/2020	1725	165.4%	7.1%	589	-17.9%	0.5%	2314	69.3%	5.3%	650	717	1367	1611	586	2197
<b>Total Inventory</b>															
Week Starting															
7/25/2020	25258	78.7%	-10.6%	13029	-20.2%	-23.0%	38287	25.7%	-15.2%	14133	16328	30461	28253	16918	45171
<b>In Foster</b>															
Week Starting															
7/25/2020	8812	198.8%	14.1%	2959	6.8%	33.9%	11771	105.8%	18.5%	2949	2770	5719	7722	2210	9932
<b>In Shelter</b>															
Week Starting															
7/25/2020	16446	47.0%	-19.9%	10070	-25.7%	-31.5%	26516	7.2%	-24.8%	11184	13558	24742	20531	14708	35239