

Week 16: July 3, 2020

The 24Pet® ShelterWatch Report: COVID-19 Impact report is a weekly gauge of U.S. homeless pet populations in the care of animal welfare organizations. Data is aggregated via the PetPoint Animal Management Software, a cloud-based application developed and launched in 2005. PetPoint is the most widely used animal management application in North American animal welfare.

The COVID-19 Impact Report aggregates data from 1191 animal welfare organizations (“AWOs”) in the United States. It compares the weekly data to data from the week before the federal declaration (March 7-13) and same week in 2019.

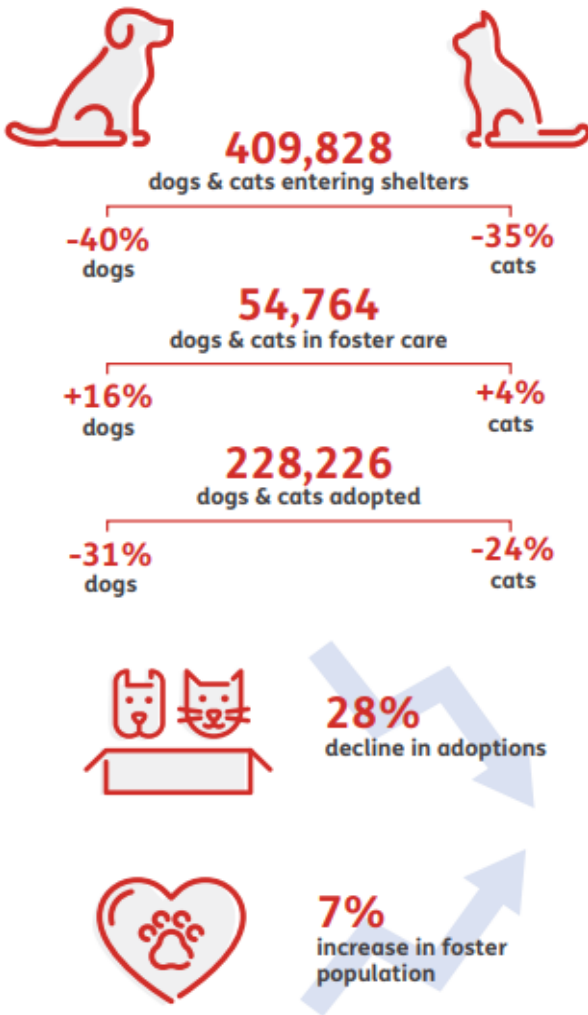
For the purposes here, AWOs are defined as animal control agencies, SPCAs, humane societies and rescue groups. Only data from AWOs operating PetPoint during both January 1, 2019 to current have been included. For commentary see: <https://pethealth.force.com/community/s/blog>

As the world navigates through a new reality, our pet population remains vulnerable and in-need.

Despite temporary closings and reduced shelter capacity, at least 409,828 new animals have arrived in the 1,191 shelters monitored by the 24Pet® ShelterWatch Report since the start of the pandemic. This number is expected to surge in the coming months with an anticipated increase in relinquished and abandoned animals.

March 13 - July 3, 2020 compared to the same period in 2019

US NATIONAL STATS



STATS BY STATE

CALIFORNIA

-41%
dogs & cats entering shelters



foster care **adoption**

- 0% dogs
- +4% cats
- 26% dogs
- 24% cats

ILLINOIS

-14%
dogs & cats entering shelters



foster care **adoption**

- +29% dogs
- +25% cats
- +6% dogs
- 9% cats

NEW YORK

-46%
dogs & cats entering shelters



foster care **adoption**

- 26% dogs
- 16% cats
- 40% dogs
- 34% cats

Pethealth Services (USA) Inc. ("24PetWatch®") strives to provide accurate and up-to-date material on this 24Pet® ShelterWatch Report (the "Report"). 24PetWatch® assumes no responsibility or does not guarantee as to the accuracy or timeliness of the material provided in this Report. Neither 24PetWatch®, its employees, officers, directors, agents, parent companies or subsidiary companies assume any liability or responsibility for any errors or omissions on any information provided within this Report.

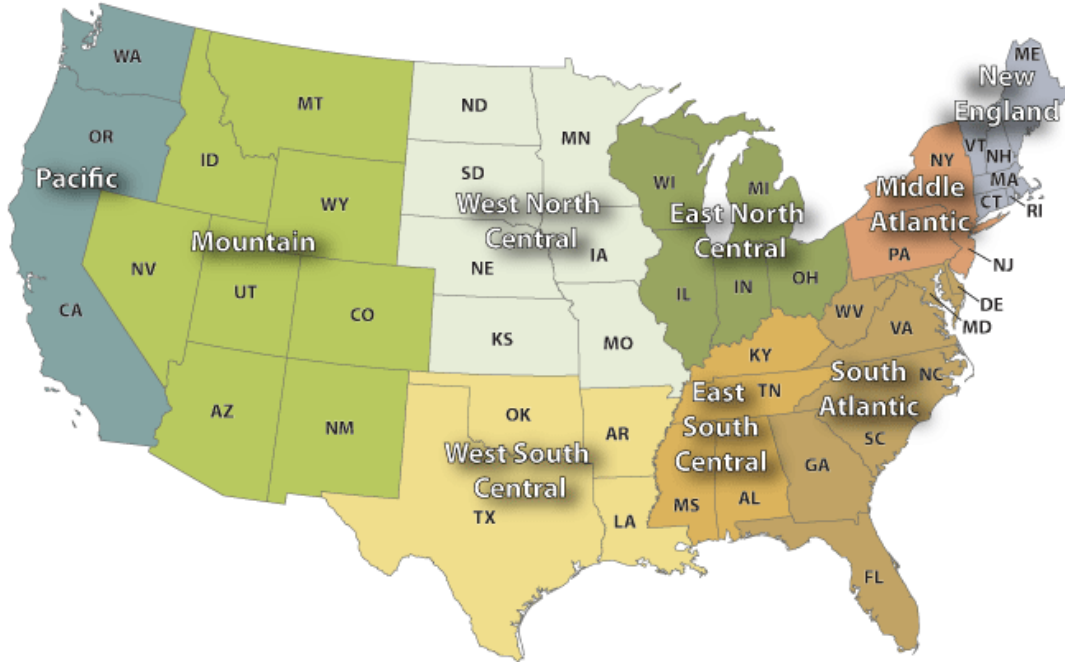
NATIONAL:

	Intake Operation	Cat			Dog			Total			March 7-13, 2020			Same Week 2019		
		Total	Wk Chg	YoY	Total	Wk Chg	YoY	Total	Wk Chg	YoY	Cat	Dog	Total	Cat	Dog	Total
Intakes	Total	17497	34.7%	-11.2%	13561	-29.1%	-27.6%	31058	-3.3%	-19.2%	12987	19124	32111	19698	18730	38428
	Owner/Guardian Surrender	5317	26.6%	-3.7%	3368	-32.0%	-21.9%	8685	-5.1%	-11.7%	4201	4955	9156	5523	4313	9836
	Return	470	-20.7%	-20.9%	686	-34.7%	-40.4%	1156	-29.6%	-33.8%	593	1050	1643	594	1151	1745
	Seized / Custody	892	11.5%	-18.1%	1519	-28.0%	-42.2%	2411	-17.1%	-35.2%	800	2109	2909	1089	2629	3718
	Stray	8603	55.1%	-17.2%	4886	-23.9%	-33.7%	13489	12.7%	-24.1%	5548	6424	11972	10388	7375	17763
	Transfer In	2215	20.1%	5.3%	3102	-32.4%	-4.9%	5317	-17.3%	-0.9%	1845	4586	6431	2104	3262	5366
Outcomes	Total	16284	34.6%	-21.4%	13249	-31.5%	-32.7%	29533	-6.0%	-26.9%	12094	19332	31426	20712	19681	40393
	Adoption	11069	41.6%	-11.3%	7440	-30.7%	-30.9%	18509	-0.2%	-20.4%	7817	10738	18555	12486	10768	23254
	Died	537	191.8%	-41.2%	84	-45.8%	-58.0%	621	83.2%	-44.2%	184	155	339	913	200	1113
	Euthanasia	2232	30.2%	-50.3%	1212	-34.0%	-47.7%	3444	-3.0%	-49.4%	1714	1835	3549	4488	2319	6807
	Return to Owner/Guardian	519	-0.6%	-9.4%	2528	-20.8%	-30.6%	3047	-18.0%	-27.7%	522	3192	3714	573	3644	4217
	Transfer Out	1927	3.8%	-14.4%	1985	-41.8%	-27.8%	3912	-25.8%	-21.8%	1857	3412	5269	2252	2750	5002
Foster Starts	Week Starting	Total	Wk Chg	YoY	Total	Wk Chg	YoY	Total	Wk Chg	YoY	Cat	Dog	Total	Cat	Dog	Total
	6/27/2020	6851	163.1%	14.2%	2445	-22.4%	-8.9%	9296	61.5%	7.1%	2604	3152	5756	5998	2684	8682
Total Inventory	Week Starting	Total	Wk Chg	YoY	Total	Wk Chg	YoY	Total	Wk Chg	YoY	Cat	Dog	Total	Cat	Dog	Total
	6/27/2020	10140	56.1%	-17.1%	54766	-22.5%	-22.2%	156169	15.1%	-19.0%	64949	70700	135649	122301	70386	192687
In Foster	Week Starting	Total	Wk Chg	YoY	Total	Wk Chg	YoY	Total	Wk Chg	YoY	Cat	Dog	Total	Cat	Dog	Total
	6/27/2020	39392	155.3%	3.5%	15372	-3.8%	15.6%	54764	74.4%	6.7%	15429	15978	31407	38056	13293	51349
In Shelter	Week Starting	Total	Wk Chg	YoY	Total	Wk Chg	YoY	Total	Wk Chg	YoY	Cat	Dog	Total	Cat	Dog	Total
	6/27/2020	62011	25.2%	-26.4%	39394	-28.0%	-31.0%	101405	-2.7%	-28.3%	49520	54722	104242	84245	57093	141338

For more information please contact: Steve Zeidman
 Senior Vice President, Software Solutions
 Pethealth Inc.
 steve.zeidman@Pethealthinc.com

REGIONAL:

U.S. Census Divisions



Pacific (AK, CA, HI, OR, WA):

Intakes	Intake Operation	Cat			Dog			Total		
		Total	Wk Chg	YoY	Total	Wk Chg	YoY	Total	Wk Chg	YoY
Total		1938	34.1%	-13.4%	1351	-32.2%	-32.9%	3289	-4.3%	-22.6%
Owner/Guardian Surrender		474	17.0%	4.6%	287	-42.7%	-37.7%	761	-16.0%	-16.7%
Return		39	-26.4%	-25.0%	57	-43.6%	-31.3%	96	-37.7%	-28.9%
Seized / Custody		57	-38.0%	-57.1%	120	-43.4%	-52.8%	177	-41.8%	-54.3%
Stray		1083	51.3%	-16.2%	625	-13.3%	-35.0%	1708	18.9%	-24.2%
Transfer In		285	59.2%	-7.2%	262	-42.7%	3.1%	547	-14.0%	-2.5%

March 7-13, 2020			Same Week 2019		
Cat	Dog	Total	Cat	Dog	Total
1445	1992	3437	2237	2013	4250
405	501	906	453	461	914
53	101	154	52	83	135
92	212	304	133	254	387
716	721	1437	1292	961	2253
179	457	636	307	254	561

Outcomes	Outcome Operation	Cat			Dog			Total		
		Total	Wk Chg	YoY	Total	Wk Chg	YoY	Total	Wk Chg	YoY
Total		1926	44.5%	-21.1%	1322	-32.9%	-31.1%	3248	-1.6%	-25.5%
Adoption		1317	56.0%	-12.0%	704	-29.9%	-23.1%	2021	9.4%	-16.2%
Died		43	258.3%	-34.8%	6	-40.0%	0.0%	49	122.7%	-31.9%
Euthanasia		274	3.0%	-57.9%	110	-55.3%	-63.0%	384	-25.0%	-59.5%
Return to Owner/Guardian		48	-40.0%	-35.1%	284	-13.7%	-39.4%	332	-18.8%	-38.9%
Transfer Out		244	86.3%	59.5%	218	-42.6%	-5.6%	462	-9.6%	20.3%

March 7-13, 2020			Same Week 2019		
Cat	Dog	Total	Cat	Dog	Total
1333	1969	3302	2440	1919	4359
844	1004	1848	1496	916	2412
12	10	22	66	6	72
266	246	512	651	297	948
80	329	409	74	469	543
131	380	511	153	231	384

Foster Starts	Week Starting	Cat			Dog			Total		
		Total	Wk Chg	YoY	Total	Wk Chg	YoY	Total	Wk Chg	YoY
	6/27/2020	891	203.1%	11.0%	198	-45.8%	-20.5%	1089	65.3%	3.5%

March 7-13, 2020			Same Week 2019		
Cat	Dog	Total	Cat	Dog	Total
294	365	659	803	249	1052

Total Inventory	Week Starting	Cat			Dog			Total		
		Total	Wk Chg	YoY	Total	Wk Chg	YoY	Total	Wk Chg	YoY
	6/27/2020	11335	69.7%	-14.4%	4358	-25.6%	-28.2%	15693	25.2%	-18.8%

March 7, 2020			Same Week 2019		
Cat	Dog	Total	Cat	Dog	Total
6678	5855	12533	13248	6069	19317

In Foster	Week Starting	Cat			Dog			Total		
		Total	Wk Chg	YoY	Total	Wk Chg	YoY	Total	Wk Chg	YoY
	6/27/2020	5146	200.8%	6.0%	1228	-7.0%	6.5%	6374	110.2%	6.1%

March 7, 2020			Same Week 2019		
Cat	Dog	Total	Cat	Dog	Total
1711	1321	3032	4856	1153	6009

In Shelter	Week Starting	Cat			Dog			Total		
		Total	Wk Chg	YoY	Total	Wk Chg	YoY	Total	Wk Chg	YoY
	6/27/2020	6189	24.6%	-26.3%	3130	-31.0%	-36.3%	9319	-1.9%	-30.0%

March 7, 2020			Same Week 2019		
Cat	Dog	Total	Cat	Dog	Total
4967	4534	9501	8392	4916	13308

Mountain (AZ, CO, ID, MT, NM, NV, UT, WY):

Intakes	Intake Operation	Cat			Dog			Total			March 7-13, 2020			Same Week 2019		
		Total	Wk Chg	YoY	Total	Wk Chg	YoY	Total	Wk Chg	YoY	Cat	Dog	Total	Cat	Dog	Total
Total		1752	62.4%	3.5%	1497	-25.3%	-27.9%	3249	5.4%	-13.8%	1079	2003	3082	1693	2075	3768
Owner/Guardian Surrender		525	37.8%	-4.0%	403	-20.4%	-19.1%	928	4.6%	-11.2%	381	506	887	547	498	1045
Return		34	-39.3%	-41.4%	72	-25.0%	-45.0%	106	-30.3%	-43.9%	56	96	152	58	131	189
Seized / Custody		75	-2.6%	21.0%	174	-25.6%	-42.4%	249	-19.9%	-31.6%	77	234	311	62	302	364
Stray		786	71.2%	-3.4%	537	-10.4%	-34.0%	1323	25.0%	-18.7%	459	599	1058	814	814	1628
Transfer In		332	213.2%	56.6%	311	-45.2%	-5.8%	643	-4.6%	18.6%	106	568	674	212	330	542

Outcomes	Outcome Operation	Cat			Dog			Total			March 7-13, 2020			Same Week 2019		
		Total	Wk Chg	YoY	Total	Wk Chg	YoY	Total	Wk Chg	YoY	Cat	Dog	Total	Cat	Dog	Total
Total		1437	26.3%	-25.3%	1556	-23.8%	-22.3%	2993	-5.9%	-23.8%	1138	2041	3179	1924	2003	3927
Adoption		1069	44.9%	-20.1%	805	-29.3%	-24.3%	1874	-0.1%	-21.9%	738	1138	1876	1338	1063	2401
Died		28	64.7%	-53.3%	3	-57.1%	-76.9%	31	29.2%	-57.5%	17	7	24	60	13	73
Euthanasia		157	-6.5%	-53.7%	177	0.0%	-2.7%	334	-3.2%	-35.9%	168	177	345	339	182	521
Return to Owner/Guardian		98	1.0%	19.5%	429	-2.7%	-34.7%	527	-2.0%	-28.7%	97	441	538	82	657	739
Transfer Out		85	-28.0%	-19.0%	142	-48.9%	61.4%	227	-42.7%	17.6%	118	278	396	105	88	193

Foster Starts	Week Starting	Cat			Dog			Total			March 7-13, 2020			Same Week 2019		
		Total	Wk Chg	YoY	Total	Wk Chg	YoY	Total	Wk Chg	YoY	Cat	Dog	Total	Cat	Dog	Total
	6/27/2020	612	215.5%	11.3%	174	8.8%	-0.6%	786	122.0%	8.4%	194	160	354	550	175	725

Total Inventory	Week Starting	Cat			Dog			Total			March 7, 2020			Same Week 2019		
		Total	Wk Chg	YoY	Total	Wk Chg	YoY	Total	Wk Chg	YoY	Cat	Dog	Total	Cat	Dog	Total
	6/27/2020	7938	42.2%	-23.8%	5246	-11.0%	-11.2%	13184	14.9%	-19.2%	5584	5893	11477	10416	5906	16322

In Foster	Week Starting	Cat			Dog			Total			March 7, 2020			Same Week 2019		
		Total	Wk Chg	YoY	Total	Wk Chg	YoY	Total	Wk Chg	YoY	Cat	Dog	Total	Cat	Dog	Total
	6/27/2020	2986	139.1%	-12.4	1095	-8.1%	18.3%	4081	67.2%	-5.9%	1249	1192	2441	3410	926	4336

In Shelter	Week Starting	Cat			Dog			Total			March 7, 2020			Same Week 2019		
		Total	Wk Chg	YoY	Total	Wk Chg	YoY	Total	Wk Chg	YoY	Cat	Dog	Total	Cat	Dog	Total
	6/27/2020	4952	14.2%	-29.3%	4151	-11.7%	-16.6%	9103	0.7%	-24.1%	4335	4701	9036	7006	4980	11986

West North Central (IA, KS, MN, MO, ND, NE, SD):

	Intake Operation	Cat			Dog			Total			March 7-13, 2020			Same Week 2019		
		Total	Wk Chg	YoY	Total	Wk Chg	YoY	Total	Wk Chg	YoY	Cat	Dog	Total	Cat	Dog	Total
Intakes	Total	1486	35.0%	-9.2%	1039	-28.7%	-29.2%	2525	-1.3%	-18.7%	1101	1457	2558	1636	1468	3104
	Owner/Guardian Surrender	540	23.0%	2.5%	327	-18.9%	-2.1%	867	3.0%	0.7%	439	403	842	527	334	861
	Return	56	-21.1%	0.0%	55	-54.9%	-47.6%	111	-42.5%	-31.1%	71	122	193	56	105	161
	Seized / Custody	30	-42.3%	-57.7%	112	-18.8%	-56.4%	142	-25.3%	-56.7%	52	138	190	71	257	328
	Stray	656	62.0%	-20.4%	337	-25.3%	-30.7%	993	16.0%	-24.2%	405	451	856	824	486	1310
	Transfer In	204	52.2%	29.1%	208	-39.4%	-27.3%	412	-13.6%	-7.2%	134	343	477	158	286	444
Outcomes	Total	1374	24.9%	-3.2%	1039	-27.3%	-25.7%	2413	-4.6%	-14.4%	1100	1430	2530	1420	1398	2818
	Adoption	912	21.3%	0.4%	606	-35.4%	-26.9%	1518	-10.2%	-12.6%	752	938	1690	908	829	1737
	Died	34	112.5%	-50.7%	7	-41.7%	-41.7%	41	46.4%	-49.4%	16	12	28	69	12	81
	Euthanasia	178	5.3%	-34.3%	74	-32.1%	-28.8%	252	-9.4%	-32.8%	169	109	278	271	104	375
	Return to Owner/Guardian	72	28.6%	14.3%	282	-6.6%	-24.4%	354	-1.1%	-18.8%	56	302	358	63	373	436
	Transfer Out	178	66.4%	63.3%	70	1.4%	-12.5%	248	40.9%	31.2%	107	69	176	109	80	189
Foster Starts	Total	361	112.4%	-10.9%	150	-25.7%	-35.9%	511	37.4%	-20.0%	170	202	372	405	234	639
	6/27/2020	361	112.4%	-10.9%	150	-25.7%	-35.9%	511	37.4%	-20.0%	170	202	372	405	234	639
Total Inventory	Total	8118	32.7%	-3.2%	3934	-11.3%	-10.9%	12052	14.2%	-5.9%	6116	4437	10553	8385	4416	12801
	6/27/2020	8118	32.7%	-3.2%	3934	-11.3%	-10.9%	12052	14.2%	-5.9%	6116	4437	10553	8385	4416	12801
In Foster	Total	3227	89.8%	27.6%	1668	17.8%	58.6%	4895	57.1%	36.7%	1700	1416	3116	2529	1052	3581
	6/27/2020	3227	89.8%	27.6%	1668	17.8%	58.6%	4895	57.1%	36.7%	1700	1416	3116	2529	1052	3581
In Shelter	Total	4891	10.8%	-16.5%	2266	-25.0%	-32.6%	7157	-3.8%	-22.4%	4416	3021	7437	5856	3364	9220
	6/27/2020	4891	10.8%	-16.5%	2266	-25.0%	-32.6%	7157	-3.8%	-22.4%	4416	3021	7437	5856	3364	9220

West South Central (AR, LA, OK, TX):

Intakes	Intake Operation	Cat			Dog			Total			March 7-13, 2020			Same Week 2019		
		Total	Wk Chg	YoY	Total	Wk Chg	YoY	Total	Wk Chg	YoY	Cat	Dog	Total	Cat	Dog	Total
Total		2324	24.2%	-19.0%	2388	-37.5%	-35.1%	4712	-17.2%	-28.0%	1871	3819	5690	2868	3679	6547
Owner/Guardian Surrender		646	44.8%	7.3%	690	-27.3%	-5.2%	1336	-4.2%	0.5%	446	949	1395	602	728	1330
Return		48	-17.2%	-32.4%	121	-37.0%	-42.1%	169	-32.4%	-39.6%	58	192	250	71	209	280
Seized / Custody		133	-7.0%	-23.6%	302	-40.7%	-53.0%	435	-33.3%	-46.7%	143	509	652	174	642	816
Stray		1311	28.0%	-25.2%	955	-44.5%	-43.2%	2266	-17.4%	-34.0%	1024	1720	2744	1753	1682	3435
Transfer In		186	-7.0%	-30.6%	320	-28.7%	-23.4%	506	-22.0%	-26.2%	200	449	649	268	418	686

Outcomes	Outcome Operation	Cat			Dog			Total			March 7-13, 2020			Same Week 2019		
		Total	Wk Chg	YoY	Total	Wk Chg	YoY	Total	Wk Chg	YoY	Cat	Dog	Total	Cat	Dog	Total
Total		2272	62.9%	-28.2%	2628	-30.9%	-38.9%	4900	-5.7%	-34.4%	1395	3802	5197	3164	4304	7468
Adoption		1393	79.0%	-17.9%	1339	-26.4%	-42.6%	2732	5.2%	-32.2%	778	1819	2597	1696	2332	4028
Died		124	342.9%	-37.4%	24	-52.9%	-64.7%	148	87.3%	-44.4%	28	51	79	198	68	266
Euthanasia		298	52.8%	-62.4%	244	-37.8%	-63.9%	542	-7.7%	-63.1%	195	392	587	792	675	1467
Return to Owner/Guardian		78	-2.5%	-4.9%	379	-43.6%	-37.3%	457	-39.2%	-33.4%	80	672	752	82	604	686
Transfer Out		379	20.7%	-4.3%	642	-26.0%	2.7%	1021	-13.6%	0.0%	314	868	1182	396	625	1021

Foster Starts	Week Starting	Cat			Dog			Total			March 7-13, 2020			Same Week 2019		
		Total	Wk Chg	YoY	Total	Wk Chg	YoY	Total	Wk Chg	YoY	Cat	Dog	Total	Cat	Dog	Total
	6/27/2020	884	136.4%	-1.7%	454	-30.3%	-29.6%	1338	30.5%	-13.3%	374	651	1025	899	645	1544

Total Inventory	Week Starting	Cat			Dog			Total			March 7, 2020			Same Week 2019		
		Total	Wk Chg	YoY	Total	Wk Chg	YoY	Total	Wk Chg	YoY	Cat	Dog	Total	Cat	Dog	Total
	6/27/2020	11957	63.1%	-25.9%	10177	-30.1%	-28.2%	22134	1.1%	-27.0%	7330	14563	21893	16135	14166	30301

In Foster	Week Starting	Cat			Dog			Total			March 7, 2020			Same Week 2019		
		Total	Wk Chg	YoY	Total	Wk Chg	YoY	Total	Wk Chg	YoY	Cat	Dog	Total	Cat	Dog	Total
	6/27/2020	5802	113.5%	-5.8%	3672	-8.7%	3.6%	9474	40.5%	-2.4%	2718	4024	6742	6161	3546	9707

In Shelter	Week Starting	Cat			Dog			Total			March 7, 2020			Same Week 2019		
		Total	Wk Chg	YoY	Total	Wk Chg	YoY	Total	Wk Chg	YoY	Cat	Dog	Total	Cat	Dog	Total
	6/27/2020	6155	33.5%	-38.3%	6505	-38.3%	-38.7%	12660	-16.4%	-38.5%	4612	10539	15151	9974	10620	20594

East North Central (IL, IN, MI, OH, WI):

Intakes	Intake Operation	Cat			Dog			Total			March 7-13, 2020			Same Week 2019		
		Total	Wk Chg	YoY	Total	Wk Chg	YoY	Total	Wk Chg	YoY	Cat	Dog	Total	Cat	Dog	Total
	Total	2617	31.5%	-8.9%	2080	-19.6%	-16.6%	4697	2.6%	-12.5%	1990	2586	4576	2874	2493	5367
	Owner/Guardian Surrender	822	1.6%	-0.8%	454	-27.9%	-22.1%	1276	-11.3%	-9.6%	809	630	1439	829	583	1412
	Return	87	-26.3%	-23.7%	123	-32.0%	-37.9%	210	-29.8%	-32.7%	118	181	299	114	198	312
	Seized / Custody	94	40.3%	-11.3%	172	-15.3%	-47.6%	266	-1.5%	-38.7%	67	203	270	106	328	434
	Stray	1270	69.1%	-20.3%	643	-9.7%	-27.4%	1913	30.8%	-22.9%	751	712	1463	1594	886	2480
	Transfer In	344	40.4%	48.9%	688	-20.0%	38.2%	1032	-6.6%	41.6%	245	860	1105	231	498	729

Outcomes	Outcome Operation	Cat			Dog			Total			March 7-13, 2020			Same Week 2019		
		Total	Wk Chg	YoY	Total	Wk Chg	YoY	Total	Wk Chg	YoY	Cat	Dog	Total	Cat	Dog	Total
	Total	2581	32.4%	-4.9%	2026	-29.0%	-20.4%	4607	-4.1%	-12.4%	1950	2853	4803	2714	2546	5260
	Adoption	1920	29.9%	0.2%	1333	-30.0%	-12.1%	3253	-3.8%	-5.2%	1478	1904	3382	1917	1516	3433
	Died	75	200.0%	-31.2%	11	-62.1%	-62.1%	86	59.3%	-37.7%	25	29	54	109	29	138
	Euthanasia	223	25.3%	-34.4%	134	-35.9%	-32.3%	357	-7.8%	-33.6%	178	209	387	340	198	538
	Return to Owner/Guardian	94	11.9%	-32.9%	423	-4.5%	-23.6%	517	-1.9%	-25.5%	84	443	527	140	554	694
	Transfer Out	269	45.4%	29.3%	125	-53.4%	-49.8%	394	-13.0%	-13.8%	185	268	453	208	249	457

Foster Starts	Week Starting	Cat			Dog			Total			March 7-13, 2020			Same Week 2019		
		Total	Wk Chg	YoY	Total	Wk Chg	YoY	Total	Wk Chg	YoY	Cat	Dog	Total	Cat	Dog	Total
	6/27/2020	1021	115.9%	23.8%	386	-33.7%	-2.8%	1407	33.4%	15.1%	473	582	1055	825	397	1222

Total Inventory	Week Starting	Cat			Dog			Total			March 7, 2020			Same Week 2019		
		Total	Wk Chg	YoY	Total	Wk Chg	YoY	Total	Wk Chg	YoY	Cat	Dog	Total	Cat	Dog	Total
	6/27/2020	18197	47.1%	-14.0%	8289	-23.1%	-17.5%	26486	14.4%	-15.1%	12369	10785	23154	21155	10046	31201

In Foster	Week Starting	Cat			Dog			Total			March 7, 2020			Same Week 2019		
		Total	Wk Chg	YoY	Total	Wk Chg	YoY	Total	Wk Chg	YoY	Cat	Dog	Total	Cat	Dog	Total
	6/27/2020	6006	163.3%	9.9%	2443	-6.8%	22.8%	8449	72.3%	13.3%	2281	2622	4903	5465	1989	7454

In Shelter	Week Starting	Cat			Dog			Total			March 7, 2020			Same Week 2019		
		Total	Wk Chg	YoY	Total	Wk Chg	YoY	Total	Wk Chg	YoY	Cat	Dog	Total	Cat	Dog	Total
	6/27/2020	12191	20.8%	-22.3%	5846	-28.4%	-27.4%	18037	-1.2%	-24.0%	10088	8163	18251	15690	8057	23747

East South Central (AL, KY, MS, TN):

Intakes	Intake Operation	Cat			Dog			Total			March 7-13, 2020			Same Week 2019		
		Total	Wk Chg	YoY	Total	Wk Chg	YoY	Total	Wk Chg	YoY	Cat	Dog	Total	Cat	Dog	Total
Total		1040	106.8%	-12.5%	1052	-19.4%	-17.9%	2092	15.6%	-15.3%	503	1306	1809	1189	1282	2471
Owner/Guardian Surrender		411	94.8%	-13.8%	399	-25.0%	-16.0%	810	9.0%	-14.9%	211	532	743	477	475	952
Return		24	-4.0%	-4.0%	50	13.6%	0.0%	74	7.2%	-1.3%	25	44	69	25	50	75
Seized / Custody		18	-25.0%	5.9%	48	-29.4%	4.3%	66	-28.3%	4.8%	24	68	92	17	46	63
Stray		495	159.2%	-16.9%	386	-17.5%	-22.3%	881	33.7%	-19.4%	191	468	659	596	497	1093
Transfer In		92	76.9%	24.3%	169	-12.9%	-21.0%	261	6.1%	-9.4%	52	194	246	74	214	288

Outcomes	Outcome Operation	Cat			Dog			Total			March 7-13, 2020			Same Week 2019		
		Total	Wk Chg	YoY	Total	Wk Chg	YoY	Total	Wk Chg	YoY	Cat	Dog	Total	Cat	Dog	Total
Total		979	89.4%	-30.2%	1008	-27.8%	-33.8%	1987	3.9%	-32.1%	517	1396	1913	1402	1523	2925
Adoption		496	53.6%	-8.5%	450	-10.7%	-8.4%	946	14.4%	-8.4%	323	504	827	542	491	1033
Died		29	1350.0%	-43.1%	10	-9.1%	-60.0%	39	200.0%	-48.7%	2	11	13	51	25	76
Euthanasia		342	284.3%	-40.0%	127	-29.8%	-51.3%	469	73.7%	-43.6%	89	181	270	570	261	831
Return to Owner/Guardian		10	-16.7%	-23.1%	128	-5.9%	0.8%	138	-6.8%	-1.4%	12	136	148	13	127	140
Transfer Out		102	12.1%	-54.9%	293	-48.0%	-52.7%	395	-39.7%	-53.3%	91	564	655	226	619	845

Foster Starts	Week Starting	Cat			Dog			Total			March 7-13, 2020			Same Week 2019		
		Total	Wk Chg	YoY	Total	Wk Chg	YoY	Total	Wk Chg	YoY	Cat	Dog	Total	Cat	Dog	Total
	6/27/2020	349	371.6%	22.0%	206	-8.4%	-12.7%	555	85.6%	6.3%	74	225	299	286	236	522

Total Inventory	Week Starting	Cat			Dog			Total			March 7, 2020			Same Week 2019		
		Total	Wk Chg	YoY	Total	Wk Chg	YoY	Total	Wk Chg	YoY	Cat	Dog	Total	Cat	Dog	Total
	6/27/2020	5880	73.1%	-8.2%	5423	-12.8%	-16.1%	11303	17.6%	-12.2%	3397	6218	9615	6404	6463	12867

In Foster	Week Starting	Cat			Dog			Total			March 7, 2020			Same Week 2019		
		Total	Wk Chg	YoY	Total	Wk Chg	YoY	Total	Wk Chg	YoY	Cat	Dog	Total	Cat	Dog	Total
	6/27/2020	1514	166.5%	10.9%	1081	-14.4%	-5.8%	2595	41.7%	3.3%	568	1263	1831	1365	1148	2513

In Shelter	Week Starting	Cat			Dog			Total			March 7, 2020			Same Week 2019		
		Total	Wk Chg	YoY	Total	Wk Chg	YoY	Total	Wk Chg	YoY	Cat	Dog	Total	Cat	Dog	Total
	6/27/2020	4366	54.3%	-13.4%	4342	-12.4%	-18.3%	8708	11.9%	-15.9%	2829	4955	7784	5039	5315	10354

New England (CT, MA, ME, NH, Ri, VT):

Intakes	Intake Operation	Cat			Dog			Total			March 7-13, 2020			Same Week 2019		
		Total	Wk Chg	YoY	Total	Wk Chg	YoY	Total	Wk Chg	YoY	Cat	Dog	Total	Cat	Dog	Total
	Total	488	-16.7%	-37.0%	459	-14.4%	-1.1%	947	-15.6%	-23.6%	586	536	1122	775	464	1239
	Owner/Guardian Surrender	160	-24.9%	-48.4%	48	-32.4%	-55.1%	208	-26.8%	-50.1%	213	71	284	310	107	417
	Return	24	-11.1%	-7.7%	13	-62.9%	-65.8%	37	-40.3%	-42.2%	27	35	62	26	38	64
	Seized / Custody	4	-20.0%	-33.3%	16	-11.1%	-23.8%	20	-13.0%	-25.9%	5	18	23	6	21	27
	Stray	171	33.6%	-25.7%	152	53.5%	9.4%	323	42.3%	-12.5%	128	99	227	230	139	369
	Transfer In	129	-39.4%	-36.5%	230	-26.5%	44.7%	359	-31.7%	-0.8%	213	313	526	203	159	362

Outcomes	Outcome Operation	Cat			Dog			Total			March 7-13, 2020			Same Week 2019		
		Total	Wk Chg	YoY	Total	Wk Chg	YoY	Total	Wk Chg	YoY	Cat	Dog	Total	Cat	Dog	Total
	Total	554	19.7%	-21.8%	321	-31.7%	-33.3%	875	-6.2%	-26.4%	463	470	933	708	481	1189
	Adoption	500	24.7%	-17.6%	242	-36.6%	-28.8%	742	-5.2%	-21.6%	401	382	783	607	340	947
	Died	6	-25.0%	-50.0%		-100.0%	-100.0%	6	-33.3%	-53.8%	8	1	9	12	1	13
	Euthanasia	26	-13.3%	-29.7%	18	-10.0%	-51.4%	44	-12.0%	-40.5%	30	20	50	37	37	74
	Return to Owner/Guardian	19	35.7%	-20.8%	57	14.0%	-36.7%	76	18.8%	-33.3%	14	50	64	24	90	114
	Transfer Out	3	-70.0%	-89.3%	4	-76.5%	-69.2%	7	-74.1%	-82.9%	10	17	27	28	13	41

Foster Starts	Week Starting	Cat			Dog			Total			March 7-13, 2020			Same Week 2019		
		Total	Wk Chg	YoY	Total	Wk Chg	YoY	Total	Wk Chg	YoY	Cat	Dog	Total	Cat	Dog	Total
	6/27/2020	177	70.2%	-14.9%	104	57.6%	50.7%	281	65.3%	1.4%	104	66	170	208	69	277

Total Inventory	Week Starting	Cat			Dog			Total			March 7, 2020			Same Week 2019		
		Total	Wk Chg	YoY	Total	Wk Chg	YoY	Total	Wk Chg	YoY	Cat	Dog	Total	Cat	Dog	Total
	6/27/2020	2795	24.5%	-26.9%	1239	-25.6%	-31.6%	4034	3.2%	-28.4%	2245	1665	3910	3826	1812	5638

In Foster	Week Starting	Cat			Dog			Total			March 7, 2020			Same Week 2019		
		Total	Wk Chg	YoY	Total	Wk Chg	YoY	Total	Wk Chg	YoY	Cat	Dog	Total	Cat	Dog	Total
	6/27/2020	1036	80.2%	-11.8	342	-11.6%	-22.6	1378	43.2%	-14.8%	575	387	962	1175	442	1617

In Shelter	Week Starting	Cat			Dog			Total			March 7, 2020			Same Week 2019		
		Total	Wk Chg	YoY	Total	Wk Chg	YoY	Total	Wk Chg	YoY	Cat	Dog	Total	Cat	Dog	Total
	6/27/2020	1759	5.3%	-33.6%	897	-29.8%	-34.5%	2656	-9.9%	-33.9%	1670	1278	2948	2651	1370	4021

Middle Atlantic (NJ, NY, PA):

Intakes	Intake Operation	Cat			Dog			Total			March 7-13, 2020			Same Week 2019		
		Total	Wk Chg	YoY	Total	Wk Chg	YoY	Total	Wk Chg	YoY	Cat	Dog	Total	Cat	Dog	Total
Total		1468	7.0%	-25.5%	1068	-23.7%	-21.7%	2536	-8.5%	-23.9%	1372	1400	2772	1970	1364	3334
Owner/Guardian Surrender		392	-14.2%	-19.2%	176	-48.1%	-34.3%	568	-28.6%	-24.6%	457	339	796	485	268	753
Return		47	-42.7%	-34.7%	60	-36.2%	-53.1%	107	-39.2%	-46.5%	82	94	176	72	128	200
Seized / Custody		66	37.5%	-53.8%	68	6.3%	-35.8%	134	19.6%	-46.2%	48	64	112	143	106	249
Stray		780	23.4%	-28.0%	238	-44.4%	-52.1%	1018	-4.0%	-35.6%	632	428	1060	1084	497	1581
Transfer In		183	19.6%	-1.6%	526	10.7%	44.1%	709	12.9%	28.7%	153	475	628	186	365	551

Outcomes	Outcome Operation	Cat			Dog			Total			March 7-13, 2020			Same Week 2019		
		Total	Wk Chg	YoY	Total	Wk Chg	YoY	Total	Wk Chg	YoY	Cat	Dog	Total	Cat	Dog	Total
Total		1432	11.4%	-27.2%	880	-34.8%	-49.7%	2312	-12.3%	-37.7%	1286	1349	2635	1966	1748	3714
Adoption		1083	23.3%	-18.3%	651	-32.9%	-50.1%	1734	-6.2%	-34.1%	878	970	1848	1325	1305	2630
Died		52	67.7%	-37.3%	5	66.7%	-44.4%	57	67.6%	-38.0%	31	3	34	83	9	92
Euthanasia		150	24.0%	-48.5%	61	-38.4%	-37.8%	211	-4.1%	-45.8%	121	99	220	291	98	389
Return to Owner/Guardian		29	0.0%	-17.1%	139	-33.5%	-44.8%	168	-29.4%	-41.5%	29	209	238	35	252	287
Transfer Out		118	-48.0%	-49.1%	24	-64.7%	-71.4%	142	-51.9%	-55.1%	227	68	295	232	84	316

Foster Starts	Week Starting	Cat			Dog			Total			March 7-13, 2020			Same Week 2019		
		Total	Wk Chg	YoY	Total	Wk Chg	YoY	Total	Wk Chg	YoY	Cat	Dog	Total	Cat	Dog	Total
	6/27/2020	674	145.1%	7.7%	243	9.0%	107.7%	917	84.1%	23.4%	275	223	498	626	117	743

Total Inventory	Week Starting	Cat			Dog			Total			March 7, 2020			Same Week 2019		
		Total	Wk Chg	YoY	Total	Wk Chg	YoY	Total	Wk Chg	YoY	Cat	Dog	Total	Cat	Dog	Total
	6/27/2020	10747	50.0%	-23.0%	3814	-25.2%	-28.7%	14561	18.7%	-24.5%	7164	5099	12263	13949	5348	19297

In Foster	Week Starting	Cat			Dog			Total			March 7, 2020			Same Week 2019		
		Total	Wk Chg	YoY	Total	Wk Chg	YoY	Total	Wk Chg	YoY	Cat	Dog	Total	Cat	Dog	Total
	6/27/2020	4487	158.5%	-1.6%	1105	3.4%	9.6%	5592	99.4%	0.4%	1736	1069	2805	4561	1008	5569

In Shelter	Week Starting	Cat			Dog			Total			March 7, 2020			Same Week 2019		
		Total	Wk Chg	YoY	Total	Wk Chg	YoY	Total	Wk Chg	YoY	Cat	Dog	Total	Cat	Dog	Total
	6/27/2020	6260	15.3%	-33.3%	2709	-32.8%	-37.6%	8969	-5.2%	-34.7%	5428	4030	9458	9388	4340	13728

South Atlantic (DE, FL, GA, MD, NC, SC, VA, WV):

Intakes	Intake Operation	Cat			Dog			Total			March 7-13, 2020			Same Week 2019		
		Total	Wk Chg	YoY	Total	Wk Chg	YoY	Total	Wk Chg	YoY	Cat	Dog	Total	Cat	Dog	Total
Total		4384	44.2%	-1.6%	2627	-34.7%	-32.5%	7011	-0.8%	-16.0%	3040	4025	7065	4456	3892	8348
Owner/Guardian Surrender		1347	60.4%	4.2%	584	-43.0%	-32.0%	1931	3.6%	-10.3%	840	1024	1864	1293	859	2152
Return		111	7.8%	-7.5%	135	-27.0%	-35.4%	246	-14.6%	-25.2%	103	185	288	120	209	329
Seized / Custody		415	42.1%	10.1%	507	-23.5%	-24.7%	922	-3.5%	-12.2%	292	663	955	377	673	1050
Stray		2051	65.1%	-6.8%	1013	-17.4%	-28.3%	3064	24.1%	-15.2%	1242	1226	2468	2201	1413	3614
Transfer In		460	-18.3%	-1.1%	388	-58.1%	-47.4%	848	-43.1%	-29.5%	563	927	1490	465	738	1203

Outcomes	Outcome Operation	Cat			Dog			Total			March 7-13, 2020			Same Week 2019		
		Total	Wk Chg	YoY	Total	Wk Chg	YoY	Total	Wk Chg	YoY	Cat	Dog	Total	Cat	Dog	Total
Total		3729	28.1%	-25.0%	2469	-38.6%	-34.3%	6198	-10.6%	-29.0%	2912	4022	6934	4974	3759	8733
Adoption		2379	46.4%	-10.5%	1310	-37.0%	-33.7%	3689	-0.4%	-20.4%	1625	2079	3704	2657	1976	4633
Died		146	224.4%	-44.9%	18	-41.9%	-51.4%	164	115.8%	-45.7%	45	31	76	265	37	302
Euthanasia		584	17.3%	-51.2%	267	-33.6%	-42.8%	851	-5.4%	-48.9%	498	402	900	1197	467	1664
Return to Owner/Guardian		71	1.4%	18.3%	407	-33.3%	-21.4%	478	-29.7%	-17.3%	70	610	680	60	518	578
Transfer Out		549	-18.5%	-30.9%	467	-48.1%	-38.6%	1016	-35.5%	-34.7%	674	900	1574	795	761	1556

Foster Starts	Week Starting	Cat			Dog			Total			March 7-13, 2020			Same Week 2019		
		Total	Wk Chg	YoY	Total	Wk Chg	YoY	Total	Wk Chg	YoY	Cat	Dog	Total	Cat	Dog	Total
	6/27/2020	1882	191.3%	34.8%	530	-21.8%	-5.7%	2412	82.2%	23.2%	646	678	1324	1396	562	1958

Total Inventory	Week Starting	Cat			Dog			Total			March 7, 2020			Same Week 2019		
		Total	Wk Chg	YoY	Total	Wk Chg	YoY	Total	Wk Chg	YoY	Cat	Dog	Total	Cat	Dog	Total
	6/27/2020	24436	73.7%	-15.1%	12286	-24.1%	-24.0%	36722	21.4%	-18.3%	14066	16185	30251	28783	16160	44943

In Foster	Week Starting	Cat			Dog			Total			March 7, 2020			Same Week 2019		
		Total	Wk Chg	YoY	Total	Wk Chg	YoY	Total	Wk Chg	YoY	Cat	Dog	Total	Cat	Dog	Total
	6/27/2020	9188	217.8%	7.7%	2738	2.0%	34.9%	11926	113.9%	12.9%	2891	2684	5575	8534	2029	10563

In Shelter	Week Starting	Cat			Dog			Total			March 7, 2020			Same Week 2019		
		Total	Wk Chg	YoY	Total	Wk Chg	YoY	Total	Wk Chg	YoY	Cat	Dog	Total	Cat	Dog	Total
	6/27/2020	15248	36.4%	-24.7%	9548	-29.3%	-32.4%	24796	0.5%	-27.9%	11175	13501	24676	20249	14131	34380