

Week 14: June 19, 2020

The 24Pet® ShelterWatch Report: COVID-19 Impact report is a weekly gauge of U.S. homeless pet populations in the care of animal welfare organizations. Data is aggregated via the PetPoint Animal Management Software, a cloud-based application developed and launched in 2005. PetPoint is the most widely used animal management application in North American animal welfare.

The COVID-19 Impact Report aggregates data from 1191 animal welfare organizations (“AWOs”) in the United States. It compares the weekly data to data from the week before the federal declaration (March 7-13) and same week in 2019.

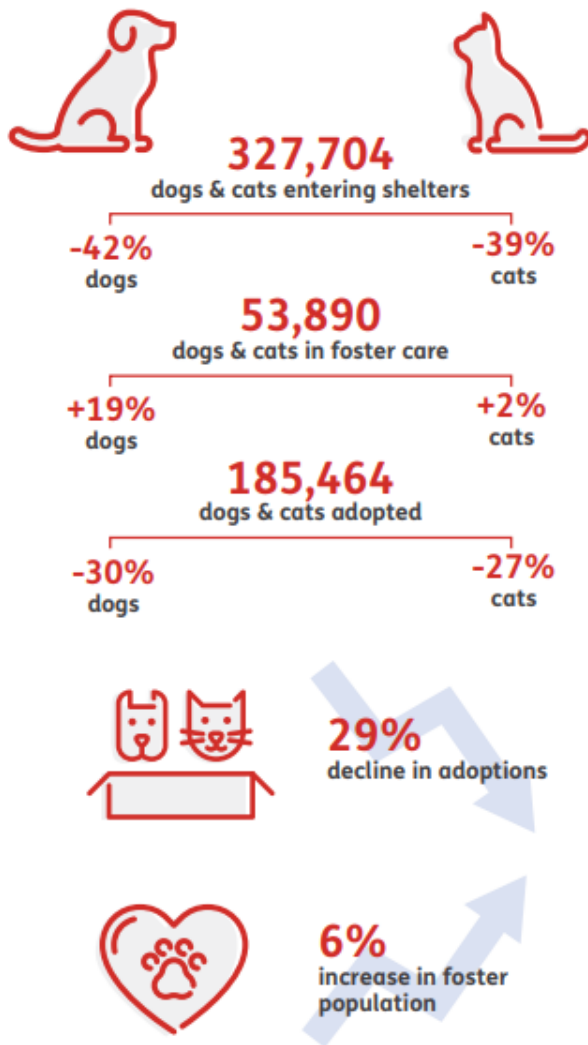
For the purposes here, AWOs are defined as animal control agencies, SPCAs, humane societies and rescue groups. Only data from AWOs operating PetPoint during both January 1, 2019 to current have been included. For commentary see: <https://pethealth.force.com/community/s/blog>

As the world navigates through a new reality, our pet population remains vulnerable and in-need.

Despite temporary closings and reduced shelter capacity, at least 327,704 new animals have arrived in the 1,191 shelters monitored by the 24Pet® ShelterWatch Report since the start of the pandemic. This number is expected to surge in the coming months with an anticipated increase in relinquished and abandoned animals.

March 13 - June 19, 2020 compared to the same period in 2019

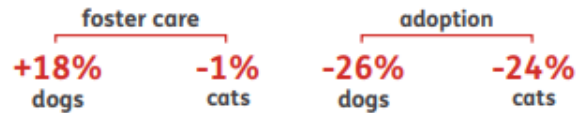
US NATIONAL STATS



STATS BY STATE

CALIFORNIA

-42%
dogs & cats entering shelters



ILLINOIS

-17%
dogs & cats entering shelters



NEW YORK

-48%
dogs & cats entering shelters



Pethealth Services (USA) Inc. ("24PetWatch") strives to provide accurate and up-to-date material on this 24Pet® ShelterWatch Report (the "Report"). 24PetWatch® assumes no responsibility or does not guarantee as to the accuracy or timeliness of the material provided in this Report. Neither 24PetWatch®, its employees, officers, directors, agents, parent companies or subsidiary companies assume any liability or responsibility for any errors or omissions on any information provided within this Report.

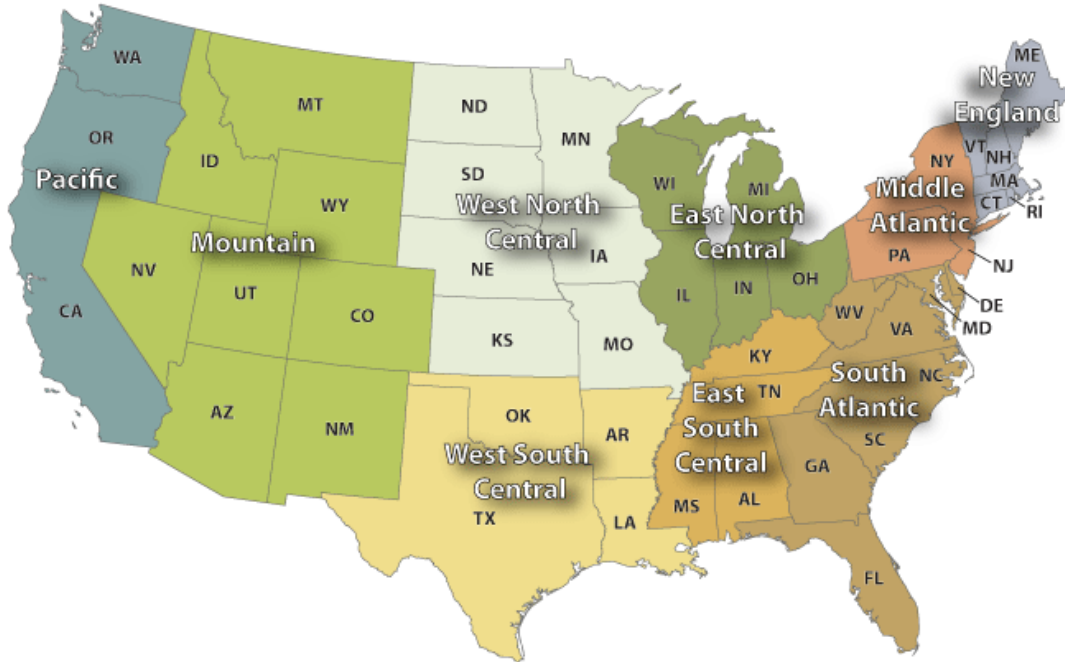
NATIONAL:

	Intake Operation	Cat			Dog			Total			March 7-13, 2020			Same Week 2019		
		Total	Wk Chg	YoY	Total	Wk Chg	YoY	Total	Wk Chg	YoY	Cat	Dog	Total	Cat	Dog	Total
Intakes	Total	18744	50.8%	-22.5%	12743	-29.4%	-34.5%	31487	3.3%	-27.9%	12432	18060	30492	24189	19461	43650
	Owner/Guardian Surrender	5135	28.5%	-23.1%	3203	-29.8%	-30.2%	8338	-2.6%	-26.0%	3997	4565	8562	6679	4592	11271
	Return	432	-23.8%	-32.8%	706	-30.1%	-36.6%	1138	-27.8%	-35.2%	567	1010	1577	643	1113	1756
	Seized / Custody	1228	54.9%	-20.1%	1492	-27.0%	-42.1%	2720	-4.1%	-33.9%	793	2044	2837	1537	2579	4116
	Stray	9197	75.6%	-25.7%	4450	-25.6%	-34.0%	13647	21.7%	-28.7%	5236	5979	11215	12381	6747	19128
	Transfer In	2752	49.6%	-6.7%	2892	-35.2%	-34.7%	5644	-10.4%	-23.5%	1839	4462	6301	2949	4430	7379
											March 7-13, 2020			Same Week 2019		
	Outcome Operation	Cat			Dog			Total			March 7-13, 2020			Same Week 2019		
		Total	Wk Chg	YoY	Total	Wk Chg	YoY	Total	Wk Chg	YoY	Cat	Dog	Total	Cat	Dog	Total
Outcomes	Total	15234	30.8%	-25.7%	12944	-29.6%	-31.5%	28178	-6.2%	-28.5%	11647	18384	30031	20503	18891	39394
	Adoption	9739	27.9%	-16.1%	7279	-29.2%	-29.1%	17018	-4.9%	-22.2%	7616	10283	17899	11603	10271	21874
	Died	539	202.8%	-41.6%	75	-51.0%	-59.5%	614	85.5%	-44.6%	178	153	331	923	185	1108
	Euthanasia	2306	42.2%	-53.7%	1077	-36.6%	-53.6%	3383	1.8%	-53.7%	1622	1700	3322	4983	2322	7305
	Return to Owner/Guardian	400	-1.2%	-38.2%	2217	-25.3%	-29.9%	2617	-22.4%	-31.3%	405	2969	3374	647	3163	3810
	Transfer Out	2250	23.2%	-4.1%	2296	-30.0%	-22.2%	4546	-11.0%	-14.2%	1826	3279	5105	2347	2950	5297
											March 7-13, 2020			Same Week 2019		
	Week Starting	Cat			Dog			Total			March 7-13, 2020			Same Week 2019		
		Total	Wk Chg	YoY	Total	Wk Chg	YoY	Total	Wk Chg	YoY	Cat	Dog	Total	Cat	Dog	Total
Foster Starts	6/13/2020	7075	183.8%	-7.5%	2429	-20.8%	-9.5%	9504	71.0%	-8.0%	2493	3066	5559	7645	2685	10330
											March 7, 2020			Same Week 2019		
	Week Starting	Cat			Dog			Total			March 7, 2020			Same Week 2019		
		Total	Wk Chg	YoY	Total	Wk Chg	YoY	Total	Wk Chg	YoY	Cat	Dog	Total	Cat	Dog	Total
Total Inventory	6/13/2020	94399	46.1%	-18.5%	53035	-23.8%	-23.1%	147434	9.9%	-20.2%	64598	69594	134192	115849	68970	184819
											March 7, 2020			Same Week 2019		
	Week Starting	Cat			Dog			Total			March 7, 2020			Same Week 2019		
		Total	Wk Chg	YoY	Total	Wk Chg	YoY	Total	Wk Chg	YoY	Cat	Dog	Total	Cat	Dog	Total
In Foster	6/13/2020	38216	150.8%	1.8%	15674	-0.2%	19.4%	53890	74.2%	6.3%	15237	15704	30941	37541	13132	50673
											March 7, 2020			Same Week 2019		
	Week Starting	Cat			Dog			Total			March 7, 2020			Same Week 2019		
		Total	Wk Chg	YoY	Total	Wk Chg	YoY	Total	Wk Chg	YoY	Cat	Dog	Total	Cat	Dog	Total
In Shelter	6/13/2020	56183	13.8%	-28.3%	37361	-30.7%	-33.1%	93544	-9.4%	-30.3%	49361	53890	103251	78308	55838	134146

For more information please contact: Steve Zeidman
 Senior Vice President, Software Solutions
 Pethealth Inc.
 steve.zeidman@Pethealthinc.com

REGIONAL:

U.S. Census Divisions



Pacific (AK, CA, HI, OR, WA):

										March 7-13, 2020			Same Week 2019			
	Cat			Dog			Total			Cat	Dog	Total	Cat	Dog	Total	
Intakes																
Intake Operation	Total	Wk Chg	YoY	Total	Wk Chg	YoY	Total	Wk Chg	YoY	Cat	Dog	Total	Cat	Dog	Total	
Total	2270	57.1%	-26.4%	1172	-41.2%	-41.7%	3442	0.1%	-32.4%	1445	1992	3437	3084	2009	5093	
Owner/Guardian Surrender	526	29.9%	-26.3%	370	-26.1%	-19.9%	896	-1.1%	-23.8%	405	501	906	714	462	1176	
Return	42	-20.8%	-40.8%	50	-50.5%	-50.0%	92	-40.3%	-46.2%	53	101	154	71	100	171	
Seized / Custody	62	-32.6%	-64.8%	113	-46.7%	-60.9%	175	-42.4%	-62.4%	92	212	304	176	289	465	
Stray	1200	67.6%	-25.3%	446	-38.1%	-42.9%	1646	14.5%	-31.1%	716	721	1437	1607	781	2388	
Transfer In	440	145.8%	-14.7%	193	-57.8%	-48.8%	633	-0.5%	-29.1%	179	457	636	516	377	893	
										March 7-13, 2020			Same Week 2019			
Outcomes										Cat	Dog	Total	Cat	Dog	Total	
Outcome Operation	Total	Wk Chg	YoY	Total	Wk Chg	YoY	Total	Wk Chg	YoY							
Total	1841	38.1%	-25.0%	1302	-33.9%	-35.0%	3143	-4.8%	-29.5%	1333	1969	3302	2454	2002	4456	
Adoption	1266	50.0%	-10.5%	678	-32.5%	-30.9%	1944	5.2%	-18.9%	844	1004	1848	1415	981	2396	
Died	40	233.3%	-45.2%	12	20.0%	100.0%	52	136.4%	-34.2%	12	10	22	73	6	79	
Euthanasia	270	1.5%	-55.6%	146	-40.7%	-47.7%	416	-18.8%	-53.1%	266	246	512	608	279	887	
Return to Owner/Guardian	52	-35.0%	-55.2%	231	-29.8%	-40.6%	283	-30.8%	-44.0%	80	329	409	116	389	505	
Transfer Out	213	62.6%	-12.0%	235	-38.2%	-32.3%	448	-12.3%	-23.9%	131	380	511	242	347	589	
										March 7-13, 2020			Same Week 2019			
Foster Starts										Cat	Dog	Total	Cat	Dog	Total	
Week Starting	Total	Wk Chg	YoY	Total	Wk Chg	YoY	Total	Wk Chg	YoY							
6/13/2020	1057	259.5%	-8.1%	202	-44.7%	-22.3%	1259	91.0%	-10.7%	294	365	659	1150	260	1410	
										March 7, 2020			Same Week 2019			
Total Inventory										Cat	Dog	Total	Cat	Dog	Total	
Week Starting	Total	Wk Chg	YoY	Total	Wk Chg	YoY	Total	Wk Chg	YoY							
6/13/2020	10937	62.4%	-13.5%	4320	-26.9%	-27.6%	15257	20.7%	-18.1%	6735	5906	12641	12651	5970	18621	
										March 7, 2020			Same Week 2019			
In Foster										Cat	Dog	Total	Cat	Dog	Total	
Week Starting	Total	Wk Chg	YoY	Total	Wk Chg	YoY	Total	Wk Chg	YoY							
6/13/2020	5156	199.6%	5.4%	1279	-3.4%	21.5%	6435	111.3%	8.3%	1721	1324	3045	4891	1053	5944	
										March 7, 2020			Same Week 2019			
In Shelter										Cat	Dog	Total	Cat	Dog	Total	
Week Starting	Total	Wk Chg	YoY	Total	Wk Chg	YoY	Total	Wk Chg	YoY							
6/13/2020	5781	15.3%	-25.5%	3041	-33.6%	-38.2%	8822	-8.1%	-30.4%	5014	4582	9596	7760	4917	12677	

Mountain (AZ, CO, ID, MT, NM, NV, UT, WY):

										March 7-13, 2020			Same Week 2019			
	Cat			Dog			Total			Cat	Dog	Total	Cat	Dog	Total	
Intakes	Intake Operation	Total	Wk Chg	YoY	Total	Wk Chg	YoY	Total	Wk Chg	YoY	Cat	Dog	Total	Cat	Dog	Total
	Total	1130	45.4%	-34.1%	1111	-24.5%	-33.1%	2241	-0.3%	-33.6%	777	1471	2248	1716	1660	3376
	Owner/Guardian Surrender	312	30.0%	-28.6%	274	-13.6%	-37.0%	586	5.2%	-32.8%	240	317	557	437	435	872
	Return	32	-34.7%	-41.8%	64	-23.8%	-49.6%	96	-27.8%	-47.3%	49	84	133	55	127	182
	Seized / Custody	77	1.3%	-30.6%	172	-18.5%	-22.5%	249	-13.2%	-25.2%	76	211	287	111	222	333
	Stray	508	63.9%	-40.0%	327	-21.2%	-34.3%	835	15.2%	-37.9%	310	415	725	847	498	1345
	Transfer In	201	97.1%	-24.4%	274	-38.3%	-27.5%	475	-13.0%	-26.2%	102	444	546	266	378	644
											March 7-13, 2020			Same Week 2019		
Outcomes	Outcome Operation	Total	Wk Chg	YoY	Total	Wk Chg	YoY	Total	Wk Chg	YoY	Cat	Dog	Total	Cat	Dog	Total
	Total	1063	24.9%	-30.0%	1130	-28.2%	-29.6%	2193	-9.5%	-29.8%	851	1573	2424	1519	1604	3123
	Adoption	749	24.0%	-26.3%	636	-27.7%	-31.5%	1385	-6.7%	-28.8%	604	880	1484	1016	929	1945
	Died	33	153.8%	-36.5%	2	-60.0%	-85.7%	35	94.4%	-47.0%	13	5	18	52	14	66
	Euthanasia	112	10.9%	-52.7%	72	-7.7%	-44.2%	184	2.8%	-49.7%	101	78	179	237	129	366
	Return to Owner/Guardian	54	134.8%	-10.0%	285	-17.9%	-28.9%	339	-8.4%	-26.5%	23	347	370	60	401	461
	Transfer Out	115	4.5%	-25.3%	135	-48.7%	3.1%	250	-33.0%	-12.3%	110	263	373	154	131	285
											March 7-13, 2020			Same Week 2019		
Foster Starts	Week Starting	Total	Wk Chg	YoY	Total	Wk Chg	YoY	Total	Wk Chg	YoY	Cat	Dog	Total	Cat	Dog	Total
	6/13/2020	404	213.2%	-43.2%	124	-3.1%	-28.3%	528	105.4%	-40.3%	129	128	257	711	173	884
											March 7, 2020			Same Week 2019		
Total Inventory	Week Starting	Total	Wk Chg	YoY	Total	Wk Chg	YoY	Total	Wk Chg	YoY	Cat	Dog	Total	Cat	Dog	Total
	6/13/2020	6770	32.5%	-23.5%	4527	-15.8%	-16.0%	11297	7.7%	-20.7%	5110	5376	10486	8854	5389	14243
											March 7, 2020			Same Week 2019		
In Foster	Week Starting	Total	Wk Chg	YoY	Total	Wk Chg	YoY	Total	Wk Chg	YoY	Cat	Dog	Total	Cat	Dog	Total
	6/13/2020	2587	138.7%	-15.9%	950	-13.8%	3.3%	3537	61.8%	-11.5%	1084	1102	2186	3076	920	3996
											March 7, 2020			Same Week 2019		
In Shelter	Week Starting	Total	Wk Chg	YoY	Total	Wk Chg	YoY	Total	Wk Chg	YoY	Cat	Dog	Total	Cat	Dog	Total
	6/13/2020	4183	3.9%	-27.6%	3577	-16.3%	-20.0%	7760	-6.5%	-24.3%	4026	4274	8300	5778	4469	10247

West North Central (IA, KS, MN, MO, ND, NE, SD):

										March 7-13, 2020			Same Week 2019			
	Cat			Dog			Total			Cat	Dog	Total	Cat	Dog	Total	
Intakes	Intake Operation	Total	Wk Chg	YoY	Total	Wk Chg	YoY	Total	Wk Chg	YoY	Cat	Dog	Total	Cat	Dog	Total
	Total	1229	25.3%	-20.2%	849	-33.8%	-36.9%	2078	-8.2%	-28.0%	981	1282	2263	1540	1345	2885
	Owner/Guardian Surrender	520	27.8%	-10.5%	246	-29.3%	-25.2%	766	1.5%	-15.8%	407	348	755	581	329	910
	Return	38	-26.9%	-13.6%	67	-34.3%	-21.2%	105	-31.8%	-18.6%	52	102	154	44	85	129
	Seized / Custody	48	4.3%	-21.3%	88	-15.4%	-54.9%	136	-9.3%	-46.9%	46	104	150	61	195	256
	Stray	458	33.1%	-28.3%	296	-23.1%	-7.8%	754	3.4%	-21.5%	344	385	729	639	321	960
	Transfer In	165	25.0%	-23.3%	152	-55.7%	-63.4%	317	-33.3%	-49.7%	132	343	475	215	415	630
											March 7-13, 2020			Same Week 2019		
Outcomes	Outcome Operation	Total	Wk Chg	YoY	Total	Wk Chg	YoY	Total	Wk Chg	YoY	Cat	Dog	Total	Cat	Dog	Total
	Total	971	-4.3%	-32.0%	899	-30.0%	-31.4%	1870	-18.7%	-31.7%	1015	1285	2300	1427	1311	2738
	Adoption	697	-0.4%	-22.9%	531	-38.3%	-34.8%	1228	-21.3%	-28.6%	700	861	1561	904	815	1719
	Died	43	186.7%	-40.3%	3	-75.0%	-85.0%	46	70.4%	-50.0%	15	12	27	72	20	92
	Euthanasia	109	-25.9%	-55.1%	58	-37.0%	-52.5%	167	-30.1%	-54.2%	147	92	239	243	122	365
	Return to Owner/Guardian	28	-39.1%	-59.4%	229	-10.2%	-11.2%	257	-14.6%	-21.4%	46	255	301	69	258	327
	Transfer Out	94	-12.1%	-32.4%	78	20.0%	-18.8%	172	0.0%	-26.8%	107	65	172	139	96	235
											March 7-13, 2020			Same Week 2019		
Foster Starts	Week Starting	Total	Wk Chg	YoY	Total	Wk Chg	YoY	Total	Wk Chg	YoY	Cat	Dog	Total	Cat	Dog	Total
	6/13/2020	312	83.5%	-22.2%	144	-28.7%	-20.4%	456	22.6%	-21.6%	170	202	372	401	181	582
											March 7, 2020			Same Week 2019		
Total Inventory	Week Starting	Total	Wk Chg	YoY	Total	Wk Chg	YoY	Total	Wk Chg	YoY	Cat	Dog	Total	Cat	Dog	Total
	6/13/2020	7151	20.5%	-4.8%	3706	-12.9%	-11.3%	10857	6.5%	-7.1%	5936	4255	10191	7508	4176	11684
											March 7, 2020			Same Week 2019		
In Foster	Week Starting	Total	Wk Chg	YoY	Total	Wk Chg	YoY	Total	Wk Chg	YoY	Cat	Dog	Total	Cat	Dog	Total
	6/13/2020	3089	81.3%	26.1%	1730	21.1%	72.1%	4819	53.9%	39.5%	1704	1428	3132	2449	1005	3454
											March 7, 2020			Same Week 2019		
In Shelter	Week Starting	Total	Wk Chg	YoY	Total	Wk Chg	YoY	Total	Wk Chg	YoY	Cat	Dog	Total	Cat	Dog	Total
	6/13/2020	4062	-4.0%	-19.7%	1976	-30.1%	-37.7%	6038	-14.5%	-26.6%	4232	2827	7059	5059	3171	8230

West South Central (AR, LA, OK, TX):

Intakes	Intake Operation	Cat			Dog			Total			March 7-13, 2020			Same Week 2019		
		Total	Wk Chg	YoY	Total	Wk Chg	YoY	Total	Wk Chg	YoY	Cat	Dog	Total	Cat	Dog	Total
Total		2570	48.0%	-25.4%	2383	-32.5%	-37.6%	4953	-6.0%	-31.8%	1736	3532	5268	3445	3817	7262
Owner/Guardian Surrender		583	40.5%	-18.7%	592	-27.8%	-33.6%	1175	-4.9%	-27.0%	415	820	1235	717	892	1609
Return		53	-8.6%	-24.3%	143	-23.5%	-22.7%	196	-20.0%	-23.1%	58	187	245	70	185	255
Seized / Custody		186	30.1%	-23.1%	346	-31.5%	-42.3%	532	-17.9%	-36.8%	143	505	648	242	600	842
Stray		1473	60.1%	-29.4%	953	-39.3%	-40.6%	2426	-2.6%	-34.3%	920	1571	2491	2085	1605	3690
Transfer In		275	37.5%	-16.9%	349	-22.3%	-34.8%	624	-3.9%	-27.9%	200	449	649	331	535	866

Outcomes	Outcome Operation	Cat			Dog			Total			March 7-13, 2020			Same Week 2019		
		Total	Wk Chg	YoY	Total	Wk Chg	YoY	Total	Wk Chg	YoY	Cat	Dog	Total	Cat	Dog	Total
Total		2144	62.4%	-25.0%	2413	-31.5%	-37.7%	4557	-5.9%	-32.3%	1320	3523	4843	2857	3875	6732
Adoption		1203	57.7%	-7.3%	1232	-28.0%	-32.5%	2435	-1.6%	-22.0%	763	1711	2474	1298	1825	3123
Died		97	259.3%	-54.7%	21	-58.8%	-65.6%	118	51.3%	-57.1%	27	51	78	214	61	275
Euthanasia		420	118.8%	-55.6%	213	-44.4%	-67.9%	633	10.1%	-60.7%	192	383	575	947	664	1611
Return to Owner/Guardian		48	2.1%	45.5%	320	-48.0%	-43.5%	368	-44.4%	-38.6%	47	615	662	33	566	599
Transfer Out		376	29.2%	3.0%	627	-17.8%	-17.4%	1003	-4.8%	-10.8%	291	763	1054	365	759	1124

Foster Starts	Week Starting	Cat			Dog			Total			March 7-13, 2020			Same Week 2019		
		Total	Wk Chg	YoY	Total	Wk Chg	YoY	Total	Wk Chg	YoY	Cat	Dog	Total	Cat	Dog	Total
	6/13/2020	848	159.3%	-21.6%	438	-28.4%	-21.2%	1286	37.0%	-21.4%	327	612	939	1081	556	1637

Total Inventory	Week Starting	Cat			Dog			Total			March 7, 2020			Same Week 2019		
		Total	Wk Chg	YoY	Total	Wk Chg	YoY	Total	Wk Chg	YoY	Cat	Dog	Total	Cat	Dog	Total
	6/13/2020	11046	52.4%	-27.2%	9910	-29.5%	-29.5%	20956	-1.6%	-28.3%	7250	14050	21300	15170	14050	29220

In Foster	Week Starting	Cat			Dog			Total			March 7, 2020			Same Week 2019		
		Total	Wk Chg	YoY	Total	Wk Chg	YoY	Total	Wk Chg	YoY	Cat	Dog	Total	Cat	Dog	Total
	6/13/2020	5533	110.6%	-2.5%	3778	-0.9%	14.2%	9311	44.6%	3.6%	2627	3812	6439	5676	3309	8985

In Shelter	Week Starting	Cat			Dog			Total			March 7, 2020			Same Week 2019		
		Total	Wk Chg	YoY	Total	Wk Chg	YoY	Total	Wk Chg	YoY	Cat	Dog	Total	Cat	Dog	Total
	6/13/2020	5513	19.3%	-41.9%	6132	-40.1%	-42.9%	11645	-21.6%	-42.5%	4623	10238	14861	9494	10741	20235

East North Central (IL, IN, MI, OH, WI):

Intakes	Intake Operation	Cat			Dog			Total			March 7-13, 2020			Same Week 2019		
		Total	Wk Chg	YoY	Total	Wk Chg	YoY	Total	Wk Chg	YoY	Cat	Dog	Total	Cat	Dog	Total
Total		2946	48.0%	-14.4%	1986	-21.1%	-23.0%	4932	9.4%	-18.0%	1991	2517	4508	3440	2578	6018
Owner/Guardian Surrender		815	0.7%	-21.9%	391	-36.2%	-27.9%	1206	-15.2%	-23.9%	809	613	1422	1043	542	1585
Return		81	-31.4%	-40.9%	118	-33.7%	-45.4%	199	-32.8%	-43.6%	118	178	296	137	216	353
Seized / Custody		172	156.7%	33.3%	167	-16.1%	-33.2%	339	27.4%	-10.6%	67	199	266	129	250	379
Stray		1331	77.0%	-23.9%	542	-18.7%	-34.4%	1873	32.0%	-27.3%	752	667	1419	1750	826	2576
Transfer In		547	123.3%	43.6%	768	-10.7%	3.2%	1315	19.0%	16.9%	245	860	1105	381	744	1125

Outcomes	Outcome Operation	Cat			Dog			Total			March 7-13, 2020			Same Week 2019		
		Total	Wk Chg	YoY	Total	Wk Chg	YoY	Total	Wk Chg	YoY	Cat	Dog	Total	Cat	Dog	Total
Total		2450	25.6%	-15.9%	2077	-25.7%	-23.7%	4527	-4.6%	-19.6%	1950	2797	4747	2913	2721	5634
Adoption		1843	24.7%	-10.1%	1445	-23.6%	-18.0%	3288	-2.4%	-13.7%	1478	1892	3370	2050	1762	3812
Died		88	252.0%	-12.9%	8	-72.4%	-60.0%	96	77.8%	-20.7%	25	29	54	101	20	121
Euthanasia		193	8.4%	-53.9%	128	-35.7%	-42.3%	321	-14.9%	-49.9%	178	199	377	419	222	641
Return to Owner/Guardian		86	2.4%	-55.9%	373	-10.8%	-25.7%	459	-8.6%	-34.1%	84	418	502	195	502	697
Transfer Out		240	29.7%	62.2%	123	-52.5%	-42.8%	363	-18.2%	0.0%	185	259	444	148	215	363

Foster Starts	Week Starting	Cat			Dog			Total			March 7-13, 2020			Same Week 2019		
		Total	Wk Chg	YoY	Total	Wk Chg	YoY	Total	Wk Chg	YoY	Cat	Dog	Total	Cat	Dog	Total
	6/13/2020	1243	162.8%	24.7%	596	5.3%	27.1%	1839	77.0%	25.4%	473	566	1039	997	469	1466

Total Inventory	Week Starting	Cat			Dog			Total			March 7, 2020			Same Week 2019		
		Total	Wk Chg	YoY	Total	Wk Chg	YoY	Total	Wk Chg	YoY	Cat	Dog	Total	Cat	Dog	Total
	6/13/2020	17010	36.0%	-15.8%	8078	-24.3%	-19.9%	25088	8.3%	-17.2%	12509	10666	23175	20202	10087	30289

In Foster	Week Starting	Cat			Dog			Total			March 7, 2020			Same Week 2019		
		Total	Wk Chg	YoY	Total	Wk Chg	YoY	Total	Wk Chg	YoY	Cat	Dog	Total	Cat	Dog	Total
	6/13/2020	5747	149.7%	-0.5%	2532	-3.1%	17.4%	8279	68.5%	4.4%	2302	2612	4914	5774	2157	7931

In Shelter	Week Starting	Cat			Dog			Total			March 7, 2020			Same Week 2019		
		Total	Wk Chg	YoY	Total	Wk Chg	YoY	Total	Wk Chg	YoY	Cat	Dog	Total	Cat	Dog	Total
	6/13/2020	11263	10.3%	-21.9%	5546	-31.1%	-30.1%	16809	-8.0%	-24.8%	10207	8054	18261	14428	7930	22358

East South Central (AL, KY, MS, TN):

	Cat			Dog			Total			March 7-13, 2020			Same Week 2019		
	Total	Wk Chg	YoY	Total	Wk Chg	YoY	Total	Wk Chg	YoY	Cat	Dog	Total	Cat	Dog	Total
Intakes															
Intake Operation															
Total	1212	140.5%	-21.5%	1053	-19.3%	-29.7%	2265	25.2%	-25.5%	504	1305	1809	1544	1497	3041
Owner/Guardian Surrender	459	117.5%	-30.8%	396	-25.6%	-24.9%	855	15.1%	-28.2%	211	532	743	663	527	1190
Return	23	-8.0%	-46.5%	55	25.0%	-1.8%	78	13.0%	-21.2%	25	44	69	43	56	99
Seized / Custody	19	-20.8%	90.0%	46	-32.4%	-47.7%	65	-29.3%	-33.7%	24	68	92	10	88	98
Stray	607	216.1%	-19.1%	431	-7.7%	-30.8%	1038	57.5%	-24.4%	192	467	659	750	623	1373
Transfer In	104	100.0%	33.3%	125	-35.6%	-38.4%	229	-6.9%	-18.5%	52	194	246	78	203	281
Outcomes															
Outcome Operation															
Total	1081	109.1%	-24.8%	1209	-13.4%	-5.0%	2290	19.7%	-15.5%	517	1396	1913	1437	1273	2710
Adoption	520	61.0%	-14.5%	512	1.6%	12.3%	1032	24.8%	-3.0%	323	504	827	608	456	1064
Died	23	1050.0%	-66.2%	6	-45.5%	-68.4%	29	123.1%	-66.7%	2	11	13	68	19	87
Euthanasia	338	279.8%	-47.3%	146	-19.3%	-38.1%	484	79.3%	-44.8%	89	181	270	641	236	877
Return to Owner/Guardian	17	41.7%	0.0%	101	-25.7%	-20.5%	118	-20.3%	-18.1%	12	136	148	17	127	144
Transfer Out	183	101.1%	77.7%	444	-21.3%	2.1%	627	-4.3%	16.5%	91	564	655	103	435	538
Foster Starts															
Week Starting															
6/13/2020	292	289.3%	18.2%	217	-3.6%	-11.4%	509	69.7%	3.5%	75	225	300	247	245	492
Total Inventory															
Week Starting															
6/13/2020	5623	64.4%	-11.1%	5476	-12.8%	-16.5%	11099	14.4%	-13.8%	3421	6279	9700	6325	6557	12882
In Foster															
Week Starting															
6/13/2020	1568	174.6%	10.7%	1178	-7.2%	0.2%	2746	49.2%	5.9%	571	1269	1840	1417	1176	2593
In Shelter															
Week Starting															
6/13/2020	4055	42.3%	-17.4%	4298	-14.2%	-20.1%	8353	6.3%	-18.8%	2850	5010	7860	4908	5381	10289

New England (CT, MA, ME, NH, RI, VT):

	Cat			Dog			Total			March 7-13, 2020			Same Week 2019		
	Total	Wk Chg	YoY	Total	Wk Chg	YoY	Total	Wk Chg	YoY	Cat	Dog	Total	Cat	Dog	Total
Intakes															
Intake Operation															
Total	586	0.0%	-19.6%	308	-42.5%	-47.7%	894	-20.3%	-32.2%	586	536	1122	729	589	1318
Owner/Guardian Surrender	141	-33.8%	-47.0%	67	-5.6%	-41.7%	208	-26.8%	-45.4%	213	71	284	266	115	381
Return	15	-44.4%	-54.5%	18	-48.6%	-50.0%	33	-46.8%	-52.2%	27	35	62	33	36	69
Seized / Custody	3	-40.0%	-25.0%	12	-33.3%	-25.0%	15	-34.8%	-25.0%	5	18	23	4	16	20
Stray	161	25.8%	-21.8%	84	-15.2%	-11.6%	245	7.9%	-18.6%	128	99	227	206	95	301
Transfer In	266	24.9%	20.9%	127	-59.4%	-61.2%	393	-25.3%	-28.2%	213	313	526	220	327	547
Outcomes															
Outcome Operation															
Total	498	7.6%	-12.2%	350	-25.5%	-38.6%	848	-9.1%	-25.4%	463	470	933	567	570	1137
Adoption	440	9.7%	-9.3%	268	-29.8%	-38.5%	708	-9.6%	-23.1%	401	382	783	485	436	921
Died	10	25.0%	66.7%		-100.0%	-100.0%	10	11.1%	42.9%	8	1	9	6	1	7
Euthanasia	24	-20.0%	-29.4%	27	35.0%	-46.0%	51	2.0%	-39.3%	30	20	50	34	50	84
Return to Owner/Guardian	22	57.1%	100.0%	52	4.0%	-27.8%	74	15.6%	-10.8%	14	50	64	11	72	83
Transfer Out	2	-80.0%	-93.5%	3	-82.4%	-72.7%	5	-81.5%	-88.1%	10	17	27	31	11	42
Foster Starts															
Week Starting															
6/13/2020	216	107.7%	5.9%	69	4.5%	-37.8%	285	67.6%	-9.5%	104	66	170	204	111	315
Total Inventory															
Week Starting															
6/13/2020	2606	14.3%	-29.6%	1247	-25.8%	-29.9%	3853	-2.7%	-29.7%	2280	1680	3960	3703	1778	5481
In Foster															
Week Starting															
6/13/2020	956	64.5%	-20.2%	375	-4.1%	-12.4%	1331	36.9%	-18.1%	581	391	972	1198	428	1626
In Shelter															
Week Starting															
6/13/2020	1650	-2.9%	-34.1%	872	-32.4%	-35.4%	2522	-15.6%	-34.6%	1699	1289	2988	2505	1350	3855

Middle Atlantic (NJ, NY, PA):

	Cat			Dog			Total			March 7-13, 2020			Same Week 2019		
	Total	Wk Chg	YoY	Total	Wk Chg	YoY	Total	Wk Chg	YoY	Cat	Dog	Total	Cat	Dog	Total
Intakes															
Intake Operation															
Total	1729	26.0%	-29.9%	885	-36.8%	-36.9%	2614	-5.7%	-32.4%	1372	1400	2772	2466	1402	3868
Owner/Guardian Surrender	432	-5.5%	-34.9%	159	-53.1%	-46.5%	591	-25.8%	-38.5%	457	339	796	664	297	961
Return	57	-30.5%	-21.9%	69	-26.6%	4.5%	126	-28.4%	-9.4%	82	94	176	73	66	139
Seized / Custody	154	220.8%	-1.9%	45	-29.7%	-59.5%	199	77.7%	-25.7%	48	64	112	157	111	268
Stray	876	38.6%	-36.6%	278	-35.0%	-39.3%	1154	8.9%	-37.2%	632	428	1060	1381	458	1839
Transfer In	210	37.3%	9.9%	334	-29.7%	-28.9%	544	-13.4%	-17.7%	153	475	628	191	470	661
Outcomes															
Outcome Operation															
Total	1163	-9.6%	-40.9%	831	-38.4%	-32.4%	1994	-24.3%	-37.7%	1286	1349	2635	1969	1230	3199
Adoption	840	-4.3%	-28.1%	586	-39.6%	-26.9%	1426	-22.8%	-27.7%	878	970	1848	1169	802	1971
Died	46	48.4%	-37.8%	5	66.7%	-44.4%	51	50.0%	-38.6%	31	3	34	74	9	83
Euthanasia	177	46.3%	-48.1%	69	-30.3%	-38.4%	246	11.8%	-45.7%	121	99	220	341	112	453
Return to Owner/Guardian	27	-6.9%	-38.6%	145	-30.6%	-40.6%	172	-27.7%	-40.3%	29	209	238	44	244	288
Transfer Out	73	-67.8%	-78.6%	26	-61.8%	-58.7%	99	-66.4%	-75.5%	227	68	295	341	63	404
Foster Starts															
Week Starting															
6/13/2020	683	148.4%	-28.6%	139	-37.9%	-13.1%	822	64.7%	-26.3%	275	224	499	956	160	1116
Total Inventory															
Week Starting															
6/13/2020	10093	40.5%	-22.9%	3708	-27.6%	-30.3%	13801	12.2%	-25.0%	7185	5120	12305	13088	5323	18411
In Foster															
Week Starting															
6/13/2020	4564	162.0%	4.8%	1141	6.2%	14.4%	5705	102.6%	6.6%	1742	1074	2816	4354	997	5351
In Shelter															
Week Starting															
6/13/2020	5529	1.6%	-36.7%	2567	-36.6%	-40.7%	8096	-14.7%	-38.0%	5443	4046	9489	8734	4326	13060

South Atlantic (DE, FL, GA, MD, NC, SC, VA, WV):

	Cat			Dog			Total			March 7-13, 2020			Same Week 2019		
	Total	Wk Chg	YoY	Total	Wk Chg	YoY	Total	Wk Chg	YoY	Cat	Dog	Total	Cat	Dog	Total
Intakes															
Intake Operation															
Total	5072	66.8%	-18.5%	2996	-25.6%	-34.4%	8068	14.2%	-25.2%	3040	4025	7065	6225	4564	10789
Owner/Guardian Surrender	1347	60.4%	-15.5%	708	-30.9%	-28.7%	2055	10.2%	-20.6%	840	1024	1864	1594	993	2587
Return	91	-11.7%	-22.2%	122	-34.1%	-49.6%	213	-26.0%	-40.7%	103	185	288	117	242	359
Seized / Custody	507	73.6%	-21.6%	503	-24.1%	-37.7%	1010	5.8%	-30.6%	292	663	955	647	808	1455
Stray	2583	108.0%	-17.1%	1093	-10.8%	-29.0%	3676	48.9%	-21.0%	1242	1226	2468	3116	1540	4656
Transfer In	544	-3.4%	-27.6%	570	-38.5%	-41.9%	1114	-25.2%	-35.7%	563	927	1490	751	981	1732
Outcomes															
Outcome Operation															
Total	4023	38.2%	-24.9%	2733	-32.0%	-36.5%	6756	-2.6%	-30.1%	2912	4022	6934	5360	4305	9665
Adoption	2181	34.2%	-17.9%	1391	-33.1%	-38.6%	3572	-3.6%	-27.4%	1625	2079	3704	2658	2265	4923
Died	159	253.3%	-39.5%	18	-41.9%	-48.6%	177	132.9%	-40.6%	45	31	76	263	35	298
Euthanasia	663	33.1%	-56.2%	218	-45.8%	-57.1%	881	-2.1%	-56.4%	498	402	900	1513	508	2021
Return to Owner/Guardian	66	-5.7%	-35.3%	481	-21.1%	-20.4%	547	-19.6%	-22.5%	70	610	680	102	604	706
Transfer Out	954	41.5%	15.8%	625	-30.6%	-30.0%	1579	0.3%	-8.0%	674	900	1574	824	893	1717
Foster Starts															
Week Starting															
6/13/2020	2020	212.7%	6.4%	500	-26.3%	-5.7%	2520	90.3%	3.8%	646	678	1324	1898	530	2428
Total Inventory															
Week Starting															
6/13/2020	23163	63.4%	-18.3%	12063	-25.8%	-22.9%	35226	15.7%	-19.9%	14172	16262	30434	28348	15640	43988
In Foster															
Week Starting															
6/13/2020	9016	210.4%	3.6%	2711	0.7%	29.9%	11727	109.5%	8.7%	2905	2692	5597	8706	2087	10793
In Shelter															
Week Starting															
6/13/2020	14147	25.6%	-28.0%	9352	-31.1%	-31.0%	23499	-5.4%	-29.2%	11267	13570	24837	19642	13553	33195