

Week 13: June 12, 2020

The 24Pet® ShelterWatch Report: COVID-19 Impact report is a weekly gauge of U.S. homeless pet populations in the care of animal welfare organizations. Data is aggregated via the PetPoint Animal Management Software, a cloud-based application developed and launched in 2005. PetPoint is the most widely used animal management application in North American animal welfare.

The COVID-19 Impact Report aggregates data from 1191 animal welfare organizations (“AWOs”) in the United States. It compares the weekly data to data from the week before the federal declaration (March 7-13) and same week in 2019.

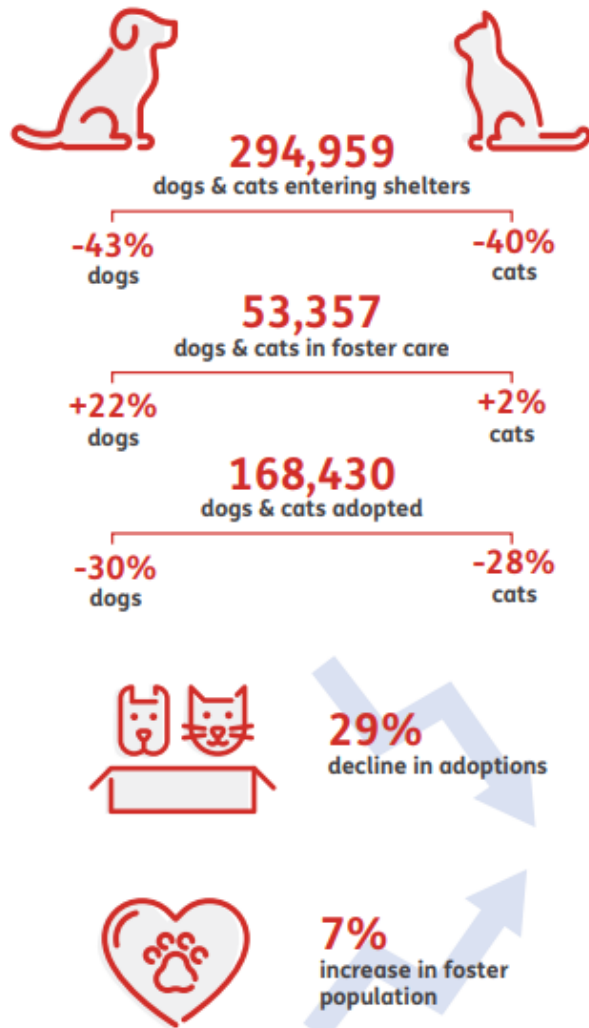
For the purposes here, AWOs are defined as animal control agencies, SPCAs, humane societies and rescue groups. Only data from AWOs operating PetPoint during both January 1, 2019 to current have been included. For commentary see: <https://pethealth.force.com/community/s/blog>

As the world navigates through a new reality, our pet population remains vulnerable and in-need.

Despite temporary closings and reduced shelter capacity, at least 294,959 new animals have arrived in the 1,191 shelters monitored by the 24Pet® ShelterWatch Report since the start of the pandemic. This number is expected to surge in the coming months with an anticipated increase in relinquished and abandoned animals.

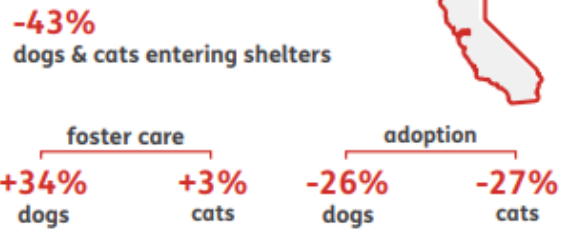
March 13 - June 12, 2020 compared to the same period in 2019

US NATIONAL STATS



STATS BY STATE

CALIFORNIA



ILLINOIS



NEW YORK



Pethealth Services (USA) Inc. ("24PetWatch®") strives to provide accurate and up-to-date material on this 24Pet® ShelterWatch Report (the "Report"). 24PetWatch® assumes no responsibility or does not guarantee as to the accuracy or timeliness of the material provided in this Report. Neither 24PetWatch®, its employees, officers, directors, agents, parent companies or subsidiary companies assume any liability or responsibility for any errors or omissions on any information provided within this Report.

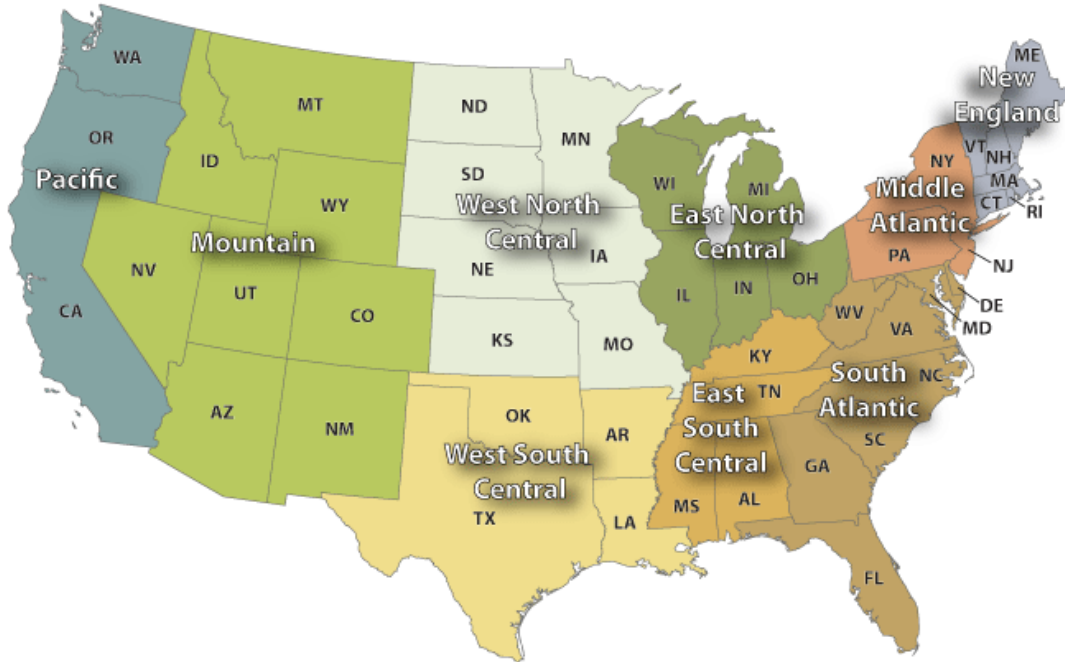
NATIONAL:

	Total	Cat			Dog			Total			March 7-13, 2020			Same Week 2019		
		Wk Chg	YoY	Total	Wk Chg	YoY	Total	Wk Chg	YoY	Cat	Dog	Total	Cat	Dog	Total	
Intakes																
Intake Operation	Total	Wk Chg	YoY	Total	Wk Chg	YoY	Total	Wk Chg	YoY	Cat	Dog	Total	Cat	Dog	Total	
Total	18544	49.2%	-23.1%	12829	-28.9%	-34.9%	31373	2.9%	-28.4%	12431	18053	30484	24129	19710	43839	
Owner/Guardian Surrender	5517	38.0%	-11.0%	3365	-26.3%	-30.3%	8882	3.8%	-19.4%	3997	4563	8560	6198	4828	11026	
Return	391	-31.0%	-35.7%	696	-31.1%	-37.7%	1087	-31.1%	-37.0%	567	1010	1577	608	1117	1725	
Seized / Custody	1163	46.7%	-29.1%	1457	-28.7%	-44.5%	2620	-7.6%	-38.6%	793	2044	2837	1641	2624	4265	
Stray	9090	73.6%	-28.9%	4285	-28.3%	-38.6%	13375	19.3%	-32.4%	5235	5976	11211	12790	6982	19772	
Transfer In	2383	29.6%	-17.6%	3026	-32.2%	-27.2%	5409	-14.1%	-23.3%	1839	4460	6299	2892	4159	7051	
Outcomes																
Outcome Operation	Total	Wk Chg	YoY	Total	Wk Chg	YoY	Total	Wk Chg	YoY	Cat	Dog	Total	Cat	Dog	Total	
Total	14260	22.4%	-30.6%	12208	-33.6%	-34.9%	26468	-11.9%	-32.6%	11647	18383	30030	20542	18749	39291	
Adoption	9143	20.0%	-20.3%	6858	-33.3%	-32.1%	16001	-10.6%	-25.8%	7616	10283	17899	11468	10094	21562	
Died	416	133.7%	-55.9%	74	-51.6%	-63.5%	490	48.0%	-57.2%	178	153	331	943	203	1146	
Euthanasia	2027	25.0%	-59.3%	1081	-36.4%	-52.4%	3108	-6.4%	-57.2%	1622	1700	3322	4985	2273	7258	
Return to Owner/Guardian	372	-8.1%	-38.2%	2087	-29.7%	-36.2%	2459	-27.1%	-36.5%	405	2968	3373	602	3270	3872	
Transfer Out	2302	26.1%	-9.5%	2108	-35.7%	-27.5%	4410	-13.6%	-19.1%	1826	3279	5105	2544	2909	5453	
Foster Starts																
Week Starting	Total	Wk Chg	YoY	Total	Wk Chg	YoY	Total	Wk Chg	YoY	Cat	Dog	Total	Cat	Dog	Total	
6/6/2020	6997	180.8%	-7.7%	2350	-23.3%	-12.5%	9347	68.2%	-8.9%	2492	3064	5556	7578	2685	10263	
Total Inventory																
Week Starting	Total	Wk Chg	YoY	Total	Wk Chg	YoY	Total	Wk Chg	YoY	Cat	Dog	Total	Cat	Dog	Total	
6/6/2020	89940	38.7%	-20.6%	52312	-25.0%	-24.0%	142252	5.7%	-21.9%	64850	69774	134624	113242	68793	182035	
In Foster																
Week Starting	Total	Wk Chg	YoY	Total	Wk Chg	YoY	Total	Wk Chg	YoY	Cat	Dog	Total	Cat	Dog	Total	
6/6/2020	37370	144.4%	1.5%	15987	1.6%	22.0%	53357	72.0%	6.9%	15292	15737	31029	36813	13101	49914	
In Shelter																
Week Starting	Total	Wk Chg	YoY	Total	Wk Chg	YoY	Total	Wk Chg	YoY	Cat	Dog	Total	Cat	Dog	Total	
6/6/2020	52570	6.1%	-31.2%	36325	-32.8%	-34.8%	88895	-14.2%	-32.7%	49558	54037	103595	76429	55692	132121	

For more information please contact: Steve Zeidman
 Senior Vice President, Software Solutions
 Pethealth Inc.
 steve.zeidman@Pethealthinc.com

REGIONAL:

U.S. Census Divisions



Pacific (AK, CA, HI, OR, WA):

	Intake Operation	Cat			Dog			Total			March 7-13, 2020			Same Week 2019		
		Total	Wk Chg	YoY	Total	Wk Chg	YoY	Total	Wk Chg	YoY	Cat	Dog	Total	Cat	Dog	Total
Intakes	Total	2114	46.3%	-27.5%	1321	-33.7%	-37.9%	3435	-0.1%	-31.9%	1445	1992	3437	2916	2128	5044
	Owner/Guardian Surrender	556	37.3%	-15.1%	313	-37.5%	-42.1%	869	-4.1%	-27.3%	405	501	906	655	541	1196
	Return	33	-37.7%	-45.0%	54	-46.5%	-50.5%	87	-43.5%	-48.5%	53	101	154	60	109	169
	Seized / Custody	56	-39.1%	-60.8%	118	-44.3%	-55.8%	174	-42.8%	-57.6%	92	212	304	143	267	410
	Stray	1194	66.8%	-21.2%	536	-25.7%	-36.9%	1730	20.4%	-26.8%	716	721	1437	1515	850	2365
	Transfer In	275	53.6%	-49.4%	300	-34.4%	-16.9%	575	-9.6%	-36.4%	179	457	636	543	361	904
Outcomes	Total	1825	36.9%	-30.0%	1211	-38.5%	-37.7%	3036	-8.1%	-33.3%	1333	1969	3302	2608	1943	4551
	Adoption	1271	50.6%	-6.5%	666	-33.7%	-32.3%	1937	4.8%	-17.3%	844	1004	1848	1359	984	2343
	Died	27	125.0%	-59.7%	5	-50.0%	-61.5%	32	45.5%	-60.0%	12	10	22	67	13	80
	Euthanasia	231	-13.2%	-68.6%	146	-40.7%	-44.1%	377	-26.4%	-62.2%	266	246	512	736	261	997
	Return to Owner/Guardian	51	-36.3%	-51.9%	242	-26.4%	-32.0%	293	-28.4%	-36.6%	80	329	409	106	356	462
	Transfer Out	245	87.0%	-27.9%	152	-60.0%	-53.8%	397	-22.3%	-40.7%	131	380	511	340	329	669
Foster Starts	Week Starting															
	6/6/2020	1015	244.1%	-6.9%	199	-45.5%	-33.0%	1214	83.9%	-12.5%	295	365	660	1090	297	1387
Total Inventory	Week Starting															
	6/6/2020	10501	55.5%	-16.0%	4239	-28.4%	-29.0%	14740	16.3%	-20.2%	6755	5924	12679	12508	5967	18475
In Foster	Week Starting															
	6/6/2020	5120	196.5%	6.7%	1362	2.9%	32.2%	6482	112.5%	11.2%	1727	1324	3051	4797	1030	5827
In Shelter	Week Starting															
	6/6/2020	5381	7.0%	-30.2%	2877	-37.5%	-41.7%	8258	-14.2%	-34.7%	5028	4600	9628	7711	4937	12648

Mountain (AZ, CO, ID, MT, NM, NV, UT, WY):

										March 7-13, 2020			Same Week 2019			
	Cat			Dog			Total			Cat	Dog	Total	Cat	Dog	Total	
Intakes	Intake Operation	Total	Wk Chg	YoY	Total	Wk Chg	YoY	Total	Wk Chg	YoY						
	Total	1117	43.9%	-36.3%	1131	-23.1%	-30.3%	2248	0.1%	-33.4%	776	1470	2246	1753	1623	3376
	Owner/Guardian Surrender	376	56.7%	-21.0%	249	-21.5%	-41.5%	625	12.2%	-30.7%	240	317	557	476	426	902
	Return	19	-61.2%	-57.8%	55	-34.5%	-43.3%	74	-44.4%	-47.9%	49	84	133	45	97	142
	Seized / Custody	60	-21.1%	-54.5%	154	-27.0%	-33.9%	214	-25.4%	-41.4%	76	211	287	132	233	365
	Stray	497	60.8%	-40.2%	364	-12.1%	-23.5%	861	19.1%	-34.1%	309	414	723	831	476	1307
	Transfer In	165	61.8%	-38.7%	309	-30.4%	-21.0%	474	-13.2%	-28.2%	102	444	546	269	391	660
											March 7-13, 2020			Same Week 2019		
Outcomes	Outcome Operation	Total	Wk Chg	YoY	Total	Wk Chg	YoY	Total	Wk Chg	YoY	Cat	Dog	Total	Cat	Dog	Total
	Total	940	10.5%	-38.2%	1038	-34.0%	-36.5%	1978	-18.4%	-37.3%	851	1572	2423	1520	1635	3155
	Adoption	700	15.9%	-33.8%	581	-34.0%	-40.3%	1281	-13.7%	-36.9%	604	880	1484	1057	974	2031
	Died	18	38.5%	-75.3%	6	20.0%	-64.7%	24	33.3%	-73.3%	13	5	18	73	17	90
	Euthanasia	103	2.0%	-62.1%	52	-33.3%	-59.1%	155	-13.4%	-61.2%	101	78	179	272	127	399
	Return to Owner/Guardian	40	73.9%	-13.0%	306	-11.6%	-25.2%	346	-6.2%	-24.0%	23	346	369	46	409	455
	Transfer Out	79	-28.2%	9.7%	93	-64.6%	-13.9%	172	-53.9%	-4.4%	110	263	373	72	108	180
											March 7-13, 2020			Same Week 2019		
Foster Starts	Week Starting	Total	Wk Chg	YoY	Total	Wk Chg	YoY	Total	Wk Chg	YoY	Cat	Dog	Total	Cat	Dog	Total
	6/6/2020	419	224.8%	-38.6%	132	3.1%	-30.2%	551	114.4%	-36.7%	129	128	257	682	189	871
											March 7, 2020			Same Week 2019		
Total Inventory	Week Starting	Total	Wk Chg	YoY	Total	Wk Chg	YoY	Total	Wk Chg	YoY	Cat	Dog	Total	Cat	Dog	Total
	6/6/2020	6663	30.0%	-23.4%	4451	-17.3%	-20.6%	11114	5.8%	-22.3%	5124	5383	10507	8698	5603	14301
											March 7, 2020			Same Week 2019		
In Foster	Week Starting	Total	Wk Chg	YoY	Total	Wk Chg	YoY	Total	Wk Chg	YoY	Cat	Dog	Total	Cat	Dog	Total
	6/6/2020	2503	129.8%	-20.0%	916	-17.1%	-1.0%	3419	55.8%	-15.7%	1089	1105	2194	3130	925	4055
											March 7, 2020			Same Week 2019		
In Shelter	Week Starting	Total	Wk Chg	YoY	Total	Wk Chg	YoY	Total	Wk Chg	YoY	Cat	Dog	Total	Cat	Dog	Total
	6/6/2020	4160	3.1%	-25.3%	3535	-17.4%	-24.4%	7695	-7.4%	-24.9%	4035	4278	8313	5568	4678	10246

West North Central (IA, KS, MN, MO, ND, NE, SD):

										March 7-13, 2020			Same Week 2019			
	Cat			Dog			Total			Cat	Dog	Total	Cat	Dog	Total	
Intakes	Intake Operation	Total	Wk Chg	YoY	Total	Wk Chg	YoY	Total	Wk Chg	YoY						
	Total	1112	13.4%	-28.8%	925	-27.8%	-30.7%	2037	-10.0%	-29.7%	981	1282	2263	1562	1335	2897
	Owner/Guardian Surrender	503	23.6%	5.9%	242	-30.5%	-37.0%	745	-1.3%	-13.3%	407	348	755	475	384	859
	Return	52	0.0%	8.3%	60	-41.2%	-36.8%	112	-27.3%	-21.7%	52	102	154	48	95	143
	Seized / Custody	41	-10.9%	-44.6%	98	-5.8%	-46.2%	139	-7.3%	-45.7%	46	104	150	74	182	256
	Stray	373	8.4%	-45.5%	271	-29.6%	-15.8%	644	-11.7%	-36.0%	344	385	729	685	322	1007
	Transfer In	143	8.3%	-48.9%	254	-25.9%	-27.8%	397	-16.4%	-37.2%	132	343	475	280	352	632
											March 7-13, 2020			Same Week 2019		
Outcomes	Outcome Operation	Total	Wk Chg	YoY	Total	Wk Chg	YoY	Total	Wk Chg	YoY	Cat	Dog	Total	Cat	Dog	Total
	Total	896	-11.7%	-38.1%	857	-33.3%	-33.8%	1753	-23.8%	-36.1%	1015	1285	2300	1448	1294	2742
	Adoption	647	-7.6%	-25.9%	541	-37.2%	-31.6%	1188	-23.9%	-28.6%	700	861	1561	873	791	1664
	Died	36	140.0%	-41.9%	5	-58.3%	0.0%	41	51.9%	-38.8%	15	12	27	62	5	67
	Euthanasia	84	-42.9%	-71.1%	68	-26.1%	-38.7%	152	-36.4%	-62.2%	147	92	239	291	111	402
	Return to Owner/Guardian	31	-32.6%	-27.9%	191	-25.1%	-36.3%	222	-26.2%	-35.3%	46	255	301	43	300	343
	Transfer Out	98	-8.4%	-45.3%	52	-20.0%	-40.2%	150	-12.8%	-43.6%	107	65	172	179	87	266
											March 7-13, 2020			Same Week 2019		
Foster Starts	Week Starting	Total	Wk Chg	YoY	Total	Wk Chg	YoY	Total	Wk Chg	YoY	Cat	Dog	Total	Cat	Dog	Total
	6/6/2020	368	116.5%	-12.6%	187	-7.4%	0.0%	555	49.2%	-8.7%	170	202	372	421	187	608
											March 7, 2020			Same Week 2019		
Total Inventory	Week Starting	Total	Wk Chg	YoY	Total	Wk Chg	YoY	Total	Wk Chg	YoY	Cat	Dog	Total	Cat	Dog	Total
	6/6/2020	6937	15.9%	-7.8%	3643	-14.8%	-11.0%	10580	3.1%	-9.0%	5985	4278	10263	7526	4094	11620
											March 7, 2020			Same Week 2019		
In Foster	Week Starting	Total	Wk Chg	YoY	Total	Wk Chg	YoY	Total	Wk Chg	YoY	Cat	Dog	Total	Cat	Dog	Total
	6/6/2020	2982	73.2%	24.3%	1723	20.4%	77.1%	4705	49.2%	39.5%	1722	1431	3153	2400	973	3373
											March 7, 2020			Same Week 2019		
In Shelter	Week Starting	Total	Wk Chg	YoY	Total	Wk Chg	YoY	Total	Wk Chg	YoY	Cat	Dog	Total	Cat	Dog	Total
	6/6/2020	3955	-7.2%	-22.8%	1920	-32.6%	-38.5%	5875	-17.4%	-28.8%	4263	2847	7110	5126	3121	8247

West South Central (AR, LA, OK, TX):

Intakes	Intake Operation	Cat			Dog			Total			March 7-13, 2020			Same Week 2019					
		Total	Wk Chg	YoY	Total	Wk Chg	YoY	Total	Wk Chg	YoY	Cat	Dog	Total	Cat	Dog	Total			
Total		2465	42.0%	-30.7%	2463	-30.2%	-36.4%	4928	-6.4%	-33.7%	1736	3531	5267	3556	3873	7429			
Owner/Guardian Surrender		542	30.6%	-31.0%	675	-17.7%	-28.0%	1217	-1.5%	-29.3%	415	820	1235	785	937	1722			
Return		50	-13.8%	-18.0%	136	-27.3%	-26.1%	186	-24.1%	-24.1%	58	187	245	61	184	245			
Seized / Custody		246	72.0%	-6.1%	362	-28.3%	-35.5%	608	-6.2%	-26.1%	143	505	648	262	561	823			
Stray		1376	49.6%	-36.1%	975	-37.9%	-41.8%	2351	-5.6%	-38.6%	920	1570	2490	2152	1676	3828			
Transfer In		251	25.5%	-15.2%	315	-29.8%	-38.8%	566	-12.8%	-30.2%	200	449	649	296	515	811			
											March 7-13, 2020			Same Week 2019					
Outcomes	Outcome Operation	Cat			Dog			Total			Cat			Dog			Total		
		Total	Wk Chg	YoY	Total	Wk Chg	YoY	Total	Wk Chg	YoY	Total	Wk Chg	YoY	Total	Wk Chg	YoY	Total	Wk Chg	YoY
Total		2065	56.4%	-30.5%	2495	-29.2%	-31.5%	4560	-5.8%	-31.1%	1320	3523	4843	2971	3643	6614			
Adoption		1228	60.9%	-9.3%	1251	-26.9%	-27.9%	2479	0.2%	-19.7%	763	1711	2474	1354	1734	3088			
Died		97	259.3%	-56.3%	19	-62.7%	-52.5%	116	48.7%	-55.7%	27	51	78	222	40	262			
Euthanasia		325	69.3%	-65.7%	244	-36.3%	-61.3%	569	-1.0%	-63.9%	192	383	575	947	631	1578			
Return to Owner/Guardian		72	53.2%	46.9%	376	-38.9%	-34.3%	448	-32.3%	-27.9%	47	615	662	49	572	621			
Transfer Out		343	17.9%	-14.0%	605	-20.7%	-9.2%	948	-10.1%	-11.0%	291	763	1054	399	666	1065			
											March 7-13, 2020			Same Week 2019					
Foster Starts	Week Starting	Cat			Dog			Total			Cat			Dog			Total		
		Total	Wk Chg	YoY	Total	Wk Chg	YoY	Total	Wk Chg	YoY	Total	Wk Chg	YoY	Total	Wk Chg	YoY	Total	Wk Chg	YoY
	6/6/2020	859	164.3%	-14.3%	469	-23.4%	-11.5%	1328	41.7%	-13.3%	325	612	937	1002	530	1532			
											March 7, 2020			Same Week 2019					
Total Inventory	Week Starting	Cat			Dog			Total			Cat			Dog			Total		
		Total	Wk Chg	YoY	Total	Wk Chg	YoY	Total	Wk Chg	YoY	Total	Wk Chg	YoY	Total	Wk Chg	YoY	Total	Wk Chg	YoY
	6/6/2020	10823	48.6%	-27.4%	9900	-29.7%	-29.5%	20723	-3.0%	-28.4%	7284	14086	21370	14900	14045	28945			
											March 7, 2020			Same Week 2019					
In Foster	Week Starting	Cat			Dog			Total			Cat			Dog			Total		
		Total	Wk Chg	YoY	Total	Wk Chg	YoY	Total	Wk Chg	YoY	Total	Wk Chg	YoY	Total	Wk Chg	YoY	Total	Wk Chg	YoY
	6/6/2020	5472	107.0%	-1.8%	3913	2.3%	14.8%	9385	45.1%	4.5%	2643	3826	6469	5570	3410	8980			
											March 7, 2020			Same Week 2019					
In Shelter	Week Starting	Cat			Dog			Total			Cat			Dog			Total		
		Total	Wk Chg	YoY	Total	Wk Chg	YoY	Total	Wk Chg	YoY	Total	Wk Chg	YoY	Total	Wk Chg	YoY	Total	Wk Chg	YoY
	6/6/2020	5351	15.3%	-42.6%	5987	-41.6%	-43.7%	11338	-23.9%	-43.2%	4641	10260	14901	9330	10635	19965			

East North Central (IL, IN, MI, OH, WI):

Intakes	Intake Operation	Cat			Dog			Total			March 7-13, 2020			Same Week 2019					
		Total	Wk Chg	YoY	Total	Wk Chg	YoY	Total	Wk Chg	YoY	Cat	Dog	Total	Cat	Dog	Total			
Total		3123	56.9%	-3.9%	1800	-28.4%	-32.4%	4923	9.3%	-16.7%	1991	2515	4506	3251	2662	5913			
Owner/Guardian Surrender		977	20.8%	1.1%	412	-32.8%	-19.7%	1389	-2.3%	-6.1%	809	613	1422	966	513	1479			
Return		78	-33.9%	-31.6%	127	-28.7%	-35.2%	205	-30.7%	-33.9%	118	178	296	114	196	310			
Seized / Custody		106	58.2%	-7.8%	149	-25.1%	-43.8%	255	-4.1%	-32.9%	67	199	266	115	265	380			
Stray		1495	98.8%	-10.9%	462	-30.7%	-42.8%	1957	37.9%	-21.3%	752	667	1419	1678	808	2486			
Transfer In		467	90.6%	23.5%	650	-24.2%	-26.1%	1117	1.3%	-11.2%	245	858	1103	378	880	1258			
											March 7-13, 2020			Same Week 2019					
Outcomes	Outcome Operation	Cat			Dog			Total			Cat			Dog			Total		
		Total	Wk Chg	YoY	Total	Wk Chg	YoY	Total	Wk Chg	YoY	Total	Wk Chg	YoY	Total	Wk Chg	YoY	Total	Wk Chg	YoY
Total		2258	15.8%	-20.9%	1886	-32.6%	-27.7%	4144	-12.7%	-24.2%	1950	2797	4747	2856	2608	5464			
Adoption		1642	11.1%	-17.0%	1281	-32.3%	-22.8%	2923	-13.3%	-19.7%	1478	1892	3370	1978	1660	3638			
Died		75	200.0%	-31.2%	11	-62.1%	-50.0%	86	59.3%	-34.4%	25	29	54	109	22	131			
Euthanasia		178	0.0%	-50.7%	122	-38.7%	-43.0%	300	-20.4%	-47.8%	178	199	377	361	214	575			
Return to Owner/Guardian		62	-26.2%	-69.8%	335	-19.9%	-30.2%	397	-20.9%	-42.0%	84	418	502	205	480	685			
Transfer Out		301	62.7%	48.3%	137	-47.1%	-40.9%	438	-1.4%	0.7%	185	259	444	203	232	435			
											March 7-13, 2020			Same Week 2019					
Foster Starts	Week Starting	Cat			Dog			Total			Cat			Dog			Total		
		Total	Wk Chg	YoY	Total	Wk Chg	YoY	Total	Wk Chg	YoY	Total	Wk Chg	YoY	Total	Wk Chg	YoY	Total	Wk Chg	YoY
	6/6/2020	1125	137.8%	2.1%	439	-22.2%	-5.8%	1564	50.8%	-0.3%	473	564	1037	1102	466	1568			
											March 7, 2020			Same Week 2019					
Total Inventory	Week Starting	Cat			Dog			Total			Cat			Dog			Total		
		Total	Wk Chg	YoY	Total	Wk Chg	YoY	Total	Wk Chg	YoY	Total	Wk Chg	YoY	Total	Wk Chg	YoY	Total	Wk Chg	YoY
	6/6/2020	16069	27.9%	-19.3%	8129	-24.0%	-19.2%	24198	4.0%	-19.3%	12565	10702	23267	19908	10061	29969			
											March 7, 2020			Same Week 2019					
In Foster	Week Starting	Cat			Dog			Total			Cat			Dog			Total		
		Total	Wk Chg	YoY	Total	Wk Chg	YoY	Total	Wk Chg	YoY	Total	Wk Chg	YoY	Total	Wk Chg	YoY	Total	Wk Chg	YoY
	6/6/2020	5502	138.5%	-1.5%	2629	0.5%	31.4%	8131	65.1%	7.2%	2307	2617	4924	5586	2001	7587			
											March 7, 2020			Same Week 2019					
In Shelter	Week Starting	Cat			Dog			Total			Cat			Dog			Total		
		Total	Wk Chg	YoY	Total	Wk Chg	YoY	Total	Wk Chg	YoY	Total	Wk Chg	YoY	Total	Wk Chg	YoY	Total	Wk Chg	YoY
	6/6/2020	10567	3.0%	-26.2%	5500	-32.0%	-31.8%	16067	-12.4%	-28.2%	10258	8085	18343	14322	8060	22382			

East South Central (AL, KY, MS, TN):

	Cat			Dog			Total			March 7-13, 2020			Same Week 2019		
	Total	Wk Chg	YoY	Total	Wk Chg	YoY	Total	Wk Chg	YoY	Cat	Dog	Total	Cat	Dog	Total
Intakes															
Intake Operation															
Total	1161	130.4%	-34.9%	1129	-13.5%	-27.0%	2290	26.6%	-31.2%	504	1305	1809	1784	1546	3330
Owner/Guardian Surrender	456	116.1%	-23.9%	443	-16.7%	-10.0%	899	21.0%	-17.6%	211	532	743	599	492	1091
Return	30	20.0%	3.4%	51	15.9%	-20.3%	81	17.4%	-12.9%	25	44	69	29	64	93
Seized / Custody	67	179.2%	-2.9%	73	7.4%	-13.1%	140	52.2%	-8.5%	24	68	92	69	84	153
Stray	509	165.1%	-49.2%	333	-28.7%	-53.6%	842	27.8%	-51.0%	192	467	659	1002	718	1720
Transfer In	99	90.4%	16.5%	229	18.0%	21.8%	328	33.3%	20.1%	52	194	246	85	188	273
Outcomes															
Outcome Operation															
Total	791	53.0%	-40.7%	1070	-23.4%	-23.7%	1861	-2.7%	-32.0%	517	1396	1913	1334	1403	2737
Adoption	389	20.4%	-26.2%	400	-20.6%	-22.9%	789	-4.6%	-24.6%	323	504	827	527	519	1046
Died	31	1450.0%	-42.6%	7	-36.4%	-85.7%	38	192.3%	-63.1%	2	11	13	54	49	103
Euthanasia	238	167.4%	-61.2%	138	-23.8%	-23.3%	376	39.3%	-52.6%	89	181	270	613	180	793
Return to Owner/Guardian	10	-16.7%	-23.1%	85	-37.5%	-52.0%	95	-35.8%	-50.0%	12	136	148	13	177	190
Transfer Out	123	35.2%	-3.1%	440	-22.0%	-7.9%	563	-14.0%	-6.9%	91	564	655	127	478	605
Foster Starts															
Week Starting															
6/6/2020	304	305.3%	-7.9%	270	20.0%	-1.5%	574	91.3%	-5.0%	75	225	300	330	274	604
Total Inventory															
Week Starting															
6/6/2020	5217	52.2%	-12.4%	5399	-14.1%	-15.5%	10616	9.3%	-14.0%	3427	6287	9714	5955	6391	12346
In Foster															
Week Starting															
6/6/2020	1460	155.7%	5.8%	1126	-11.3%	-5.7%	2586	40.5%	0.5%	571	1269	1840	1380	1194	2574
In Shelter															
Week Starting															
6/6/2020	3757	31.5%	-17.9%	4273	-14.8%	-17.8%	8030	2.0%	-17.8%	2856	5018	7874	4575	5197	9772

New England (CT, MA, ME, NH, RI, VT):

	Cat			Dog			Total			March 7-13, 2020			Same Week 2019		
	Total	Wk Chg	YoY	Total	Wk Chg	YoY	Total	Wk Chg	YoY	Cat	Dog	Total	Cat	Dog	Total
Intakes															
Intake Operation															
Total	380	-35.2%	-45.9%	377	-29.4%	-22.9%	757	-32.4%	-36.4%	586	534	1120	702	489	1191
Owner/Guardian Surrender	124	-41.8%	-58.0%	66	-4.3%	-42.6%	190	-32.6%	-53.7%	213	69	282	295	115	410
Return	13	-51.9%	-67.5%	16	-54.3%	-57.9%	29	-53.2%	-62.8%	27	35	62	40	38	78
Seized / Custody	11	120.0%	-47.6%	13	-27.8%	30.0%	24	4.3%	-22.6%	5	18	23	21	10	31
Stray	124	-3.1%	-43.6%	126	27.3%	29.9%	250	10.1%	-21.1%	128	99	227	220	97	317
Transfer In	108	-49.3%	-14.3%	156	-50.2%	-31.9%	264	-49.8%	-25.6%	213	313	526	126	229	355
Outcomes															
Outcome Operation															
Total	407	-12.1%	-31.5%	364	-22.6%	-30.3%	771	-17.4%	-30.9%	463	470	933	594	522	1116
Adoption	360	-10.2%	-28.1%	301	-21.2%	-29.5%	661	-15.6%	-28.8%	401	382	783	501	427	928
Died	2	-75.0%	-60.0%		-100.0%	-100.0%	2	-77.8%	-77.8%	8	1	9	5	4	9
Euthanasia	27	-10.0%	-44.9%	24	20.0%	-14.3%	51	2.0%	-33.8%	30	20	50	49	28	77
Return to Owner/Guardian	15	7.1%	-31.8%	38	-24.0%	-25.5%	53	-17.2%	-27.4%	14	50	64	22	51	73
Transfer Out	3	-70.0%	-82.4%	1	-94.1%	-91.7%	4	-85.2%	-86.2%	10	17	27	17	12	29
Foster Starts															
Week Starting															
6/6/2020	176	69.2%	-34.6%	63	-4.5%	-18.2%	239	40.6%	-30.9%	104	66	170	269	77	346
Total Inventory															
Week Starting															
6/6/2020	2589	12.7%	-27.9%	1261	-25.4%	-30.3%	3850	-3.4%	-28.7%	2297	1690	3987	3592	1809	5401
In Foster															
Week Starting															
6/6/2020	1029	77.1%	-10.7%	378	-3.6%	-19.7%	1407	44.6%	-13.3%	581	392	973	1152	471	1623
In Shelter															
Week Starting															
6/6/2020	1560	-9.1%	-36.1%	883	-32.0%	-34.0%	2443	-18.9%	-35.3%	1716	1298	3014	2440	1338	3778

Middle Atlantic (NJ, NY, PA):

Intakes	Intake Operation	Cat			Dog			Total			March 7-13, 2020			Same Week 2019		
		Total	Wk Chg	YoY	Total	Wk Chg	YoY	Total	Wk Chg	YoY	Cat	Dog	Total	Cat	Dog	Total
Total		1611	17.4%	-27.1%	825	-41.0%	-40.4%	2436	-12.1%	-32.3%	1372	1399	2771	2211	1385	3596
Owner/Guardian Surrender		482	5.5%	-14.5%	182	-46.3%	-53.2%	664	-16.6%	-30.3%	457	339	796	564	389	953
Return		37	-54.9%	-50.0%	53	-43.6%	-38.4%	90	-48.9%	-43.8%	82	94	176	74	86	160
Seized / Custody		47	-2.1%	-55.2%	40	-37.5%	-60.0%	87	-22.3%	-57.6%	48	64	112	105	100	205
Stray		861	36.2%	-35.4%	245	-42.6%	-44.4%	1106	4.4%	-37.6%	632	427	1059	1332	441	1773
Transfer In		184	20.3%	35.3%	305	-35.8%	-17.3%	489	-22.1%	-3.2%	153	475	628	136	369	505
											March 7-13, 2020			Same Week 2019		
Outcomes	Outcome Operation	Cat			Dog			Total			March 7-13, 2020			Same Week 2019		
		Total	Wk Chg	YoY	Total	Wk Chg	YoY	Total	Wk Chg	YoY	Cat	Dog	Total	Cat	Dog	Total
Total		1138	-11.5%	-36.5%	748	-44.6%	-46.5%	1886	-28.4%	-40.8%	1286	1349	2635	1791	1397	3188
Adoption		846	-3.6%	-21.6%	513	-47.1%	-40.9%	1359	-26.5%	-30.2%	878	970	1848	1079	868	1947
Died		28	-9.7%	-61.1%	7	133.3%	-22.2%	35	2.9%	-56.8%	31	3	34	72	9	81
Euthanasia		131	8.3%	-51.8%	67	-32.3%	-48.9%	198	-10.0%	-50.9%	121	99	220	272	131	403
Return to Owner/Guardian		24	-17.2%	-50.0%	149	-28.7%	-48.1%	173	-27.3%	-48.4%	29	209	238	48	287	335
Transfer Out		109	-52.0%	-65.9%	12	-82.4%	-88.2%	121	-59.0%	-71.3%	227	68	295	320	102	422
											March 7-13, 2020			Same Week 2019		
Foster Starts	Week Starting	Cat			Dog			Total			March 7-13, 2020			Same Week 2019		
		Total	Wk Chg	YoY	Total	Wk Chg	YoY	Total	Wk Chg	YoY	Cat	Dog	Total	Cat	Dog	Total
	6/6/2020	772	180.7%	-7.5%	123	-45.1%	-18.0%	895	79.4%	-9.1%	275	224	499	835	150	985
											March 7, 2020			Same Week 2019		
Total Inventory	Week Starting	Cat			Dog			Total			March 7, 2020			Same Week 2019		
		Total	Wk Chg	YoY	Total	Wk Chg	YoY	Total	Wk Chg	YoY	Cat	Dog	Total	Cat	Dog	Total
	6/6/2020	9644	33.9%	-23.7%	3621	-29.4%	-32.4%	13265	7.6%	-26.2%	7205	5126	12331	12633	5353	17986
											March 7, 2020			Same Week 2019		
In Foster	Week Starting	Cat			Dog			Total			March 7, 2020			Same Week 2019		
		Total	Wk Chg	YoY	Total	Wk Chg	YoY	Total	Wk Chg	YoY	Cat	Dog	Total	Cat	Dog	Total
	6/6/2020	4508	158.5%	7.0%	1190	10.8%	20.6%	5698	102.2%	9.6%	1744	1074	2818	4212	987	5199
											March 7, 2020			Same Week 2019		
In Shelter	Week Starting	Cat			Dog			Total			March 7, 2020			Same Week 2019		
		Total	Wk Chg	YoY	Total	Wk Chg	YoY	Total	Wk Chg	YoY	Cat	Dog	Total	Cat	Dog	Total
	6/6/2020	5136	-6.0%	-39.0%	2431	-40.0%	-44.3%	7567	-20.5%	-40.8%	5461	4052	9513	8421	4366	12787

South Atlantic (DE, FL, GA, MD, NC, SC, VA, WV):

Intakes	Intake Operation	Cat			Dog			Total			March 7-13, 2020			Same Week 2019		
		Total	Wk Chg	YoY	Total	Wk Chg	YoY	Total	Wk Chg	YoY	Cat	Dog	Total	Cat	Dog	Total
Total		5461	79.6%	-14.6%	2858	-29.0%	-38.8%	8319	17.7%	-24.8%	3040	4025	7065	6394	4669	11063
Owner/Guardian Surrender		1501	78.7%	8.5%	783	-23.5%	-24.1%	2284	22.5%	-5.4%	840	1024	1864	1383	1031	2414
Return		79	-23.3%	-42.3%	144	-22.2%	-41.9%	223	-22.6%	-42.1%	103	185	288	137	248	385
Seized / Custody		529	81.2%	-26.5%	450	-32.1%	-51.2%	979	2.5%	-40.4%	292	663	955	720	922	1642
Stray		2661	114.3%	-21.2%	973	-20.6%	-39.0%	3634	47.2%	-26.9%	1242	1226	2468	3375	1594	4969
Transfer In		691	22.7%	-11.3%	508	-45.2%	-41.9%	1199	-19.5%	-27.5%	563	927	1490	779	874	1653
											March 7-13, 2020			Same Week 2019		
Outcomes	Outcome Operation	Cat			Dog			Total			March 7-13, 2020			Same Week 2019		
		Total	Wk Chg	YoY	Total	Wk Chg	YoY	Total	Wk Chg	YoY	Cat	Dog	Total	Cat	Dog	Total
Total		3940	35.3%	-27.3%	2539	-36.9%	-41.0%	6479	-6.6%	-33.4%	2912	4022	6934	5420	4304	9724
Adoption		2060	26.8%	-24.8%	1324	-36.3%	-38.0%	3384	-8.6%	-30.6%	1625	2079	3704	2740	2137	4877
Died		102	126.7%	-63.4%	14	-54.8%	-68.2%	116	52.6%	-64.1%	45	31	76	279	44	323
Euthanasia		710	42.6%	-50.8%	220	-45.3%	-62.7%	930	3.3%	-54.3%	498	402	900	1444	590	2034
Return to Owner/Guardian		67	-4.3%	-4.3%	365	-40.2%	-42.8%	432	-36.5%	-39.0%	70	610	680	70	638	708
Transfer Out		1001	48.5%	12.9%	616	-31.6%	-31.2%	1617	2.7%	-9.3%	674	900	1574	887	895	1782
											March 7-13, 2020			Same Week 2019		
Foster Starts	Week Starting	Cat			Dog			Total			March 7-13, 2020			Same Week 2019		
		Total	Wk Chg	YoY	Total	Wk Chg	YoY	Total	Wk Chg	YoY	Cat	Dog	Total	Cat	Dog	Total
	6/6/2020	1959	203.3%	6.1%	468	-31.0%	-9.1%	2427	83.3%	2.8%	646	678	1324	1847	515	2362
											March 7, 2020			Same Week 2019		
Total Inventory	Week Starting	Cat			Dog			Total			March 7, 2020			Same Week 2019		
		Total	Wk Chg	YoY	Total	Wk Chg	YoY	Total	Wk Chg	YoY	Cat	Dog	Total	Cat	Dog	Total
	6/6/2020	21497	51.3%	-21.9%	11669	-28.4%	-24.6%	33166	8.7%	-22.9%	14208	16298	30506	27522	15470	42992
											March 7, 2020			Same Week 2019		
In Foster	Week Starting	Cat			Dog			Total			March 7, 2020			Same Week 2019		
		Total	Wk Chg	YoY	Total	Wk Chg	YoY	Total	Wk Chg	YoY	Cat	Dog	Total	Cat	Dog	Total
	6/6/2020	8794	202.4%	2.4%	2750	1.9%	30.3%	11544	105.9%	7.9%	2908	2699	5607	8586	2110	10696
											March 7, 2020			Same Week 2019		
In Shelter	Week Starting	Cat			Dog			Total			March 7, 2020			Same Week 2019		
		Total	Wk Chg	YoY	Total	Wk Chg	YoY	Total	Wk Chg	YoY	Cat	Dog	Total	Cat	Dog	Total
	6/6/2020	12703	12.4%	-32.9%	8919	-34.4%	-38.2%	21622	-13.2%	-33.1%	11300	13599	24899	18936	13360	32296