

**Week 12: June 5, 2020**

The 24Pet® ShelterWatch Report: COVID-19 Impact report is a weekly gauge of U.S. homeless pet populations in the care of animal welfare organizations. Data is aggregated via the PetPoint Animal Management Software, a cloud-based application developed and launched in 2005. PetPoint is the most widely used animal management application in North American animal welfare.

The COVID-19 Impact Report aggregates data from 1191 animal welfare organizations (“AWOs”) in the United States. It compares the weekly data to data from the week before the federal declaration (March 7-13) and same week in 2019.

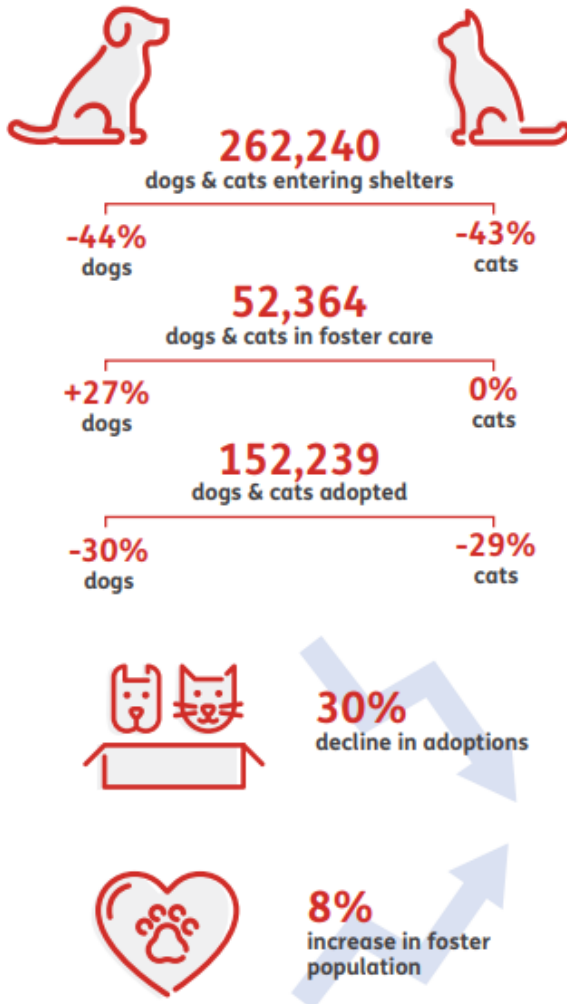
For the purposes here, AWOs are defined as animal control agencies, SPCAs, humane societies and rescue groups. Only data from AWOs operating PetPoint during both January 1, 2019 to current have been included. For commentary see: <https://pethealth.force.com/community/s/blog>

## As the world navigates through a new reality, our pet population remains vulnerable and in-need.

Despite temporary closings and reduced shelter capacity, at least 262,240 new animals have arrived in the 1,191 shelters monitored by the 24Pet® ShelterWatch Report since the start of the pandemic. This number is expected to surge in the coming months with an anticipated increase in relinquished and abandoned animals.

March 13 - June 5, 2020 compared to the same period in 2019

### US NATIONAL STATS



### STATS BY STATE

#### CALIFORNIA

**-44%**  
dogs & cats entering shelters

**+42%** dogs (foster care)  
**+5%** cats (foster care)  
**-25%** dogs (adoption)  
**-30%** cats (adoption)

#### ILLINOIS

**-22%**  
dogs & cats entering shelters

**+58%** dogs (foster care)  
**+29%** cats (foster care)  
**+5%** dogs (adoption)  
**-20%** cats (adoption)

#### NEW YORK

**-51%**  
dogs & cats entering shelters

**-19%** dogs (foster care)  
**-8%** cats (foster care)  
**-47%** dogs (adoption)  
**-37%** cats (adoption)

Pethealth Services (USA) Inc. ("24PetWatch") strives to provide accurate and up-to-date material on this 24Pet® ShelterWatch Report (the "Report"). 24PetWatch® assumes no responsibility or does not guarantee as to the accuracy or timeliness of the material provided in this Report. Neither 24PetWatch®, its employees, officers, directors, agents, parent companies or subsidiary companies assume any liability or responsibility for any errors or omissions on any information provided within this Report.

NATIONAL:

Intakes	Intake Operation	Cat			Dog			Total			March 7-13, 2020			Same Week 2019		
		Total	Wk Chg	YoY	Total	Wk Chg	YoY	Total	Wk Chg	YoY	Cat	Dog	Total	Cat	Dog	Total
	<b>Total</b>	17909	44.4%	-28.5%	11763	-34.8%	-40.1%	29672	-2.6%	-33.6%	12399	18053	30452	25065	19645	44710
	Owner/Guardian Surrender	4965	24.3%	-22.5%	3139	-31.2%	-35.7%	8104	-5.3%	-28.2%	3993	4563	8556	6405	4884	11289
	Return	375	-33.9%	-43.0%	684	-32.3%	-37.5%	1059	-32.8%	-39.6%	567	1010	1577	658	1095	1753
	Seized / Custody	1049	32.3%	-29.0%	1440	-29.5%	-40.7%	2489	-12.3%	-36.3%	793	2044	2837	1478	2430	3908
	Stray	9174	76.2%	-30.8%	3996	-33.1%	-42.1%	13170	17.8%	-34.7%	5207	5976	11183	13252	6906	20158
	Transfer In	2346	27.6%	-28.3%	2504	-43.9%	-42.2%	4850	-23.0%	-36.2%	1839	4460	6299	3272	4330	7602

Outcomes	Outcome Operation	Cat			Dog			Total			March 7-13, 2020			Same Week 2019		
		Total	Wk Chg	YoY	Total	Wk Chg	YoY	Total	Wk Chg	YoY	Cat	Dog	Total	Cat	Dog	Total
	<b>Total</b>	12690	9.0%	-33.2%	12309	-33.0%	-35.3%	24999	-16.8%	-34.3%	11646	18383	30029	19011	19038	38049
	Adoption	7879	3.5%	-24.2%	7107	-30.9%	-31.0%	14986	-16.3%	-27.6%	7616	10283	17899	10392	10295	20687
	Died	464	162.1%	-48.7%	104	-32.0%	-33.8%	568	72.1%	-46.5%	177	153	330	904	157	1061
	Euthanasia	1818	12.1%	-61.1%	985	-42.1%	-62.0%	2803	-15.6%	-61.5%	1622	1700	3322	4679	2595	7274
	Return to Owner/Guardian	309	-23.7%	-45.9%	2145	-27.7%	-33.1%	2454	-27.2%	-35.0%	405	2968	3373	571	3207	3778
	Transfer Out	2220	21.6%	-9.9%	1968	-40.0%	-29.3%	4188	-18.0%	-20.2%	1826	3279	5105	2465	2784	5249

Foster Starts	Week Starting	Cat			Dog			Total			March 7-13, 2020			Same Week 2019		
		Total	Wk Chg	YoY	Total	Wk Chg	YoY	Total	Wk Chg	YoY	Cat	Dog	Total	Cat	Dog	Total
	5/30/2020	7118	189.5%	-9.6%	2350	-23.3%	-17.1%	9468	71.4%	-11.6%	2459	3065	5524	7877	2835	10712

Total Inventory	Week Starting	Cat			Dog			Total			March 7, 2020			Same Week 2019		
		Total	Wk Chg	YoY	Total	Wk Chg	YoY	Total	Wk Chg	YoY	Cat	Dog	Total	Cat	Dog	Total
	5/30/2020	85174	30.7%	-21.4%	52635	-24.8%	-22.8%	137809	2.0%	-21.9%	65172	69973	135145	108347	68151	176498

In Foster	Week Starting	Cat			Dog			Total			March 7, 2020			Same Week 2019		
		Total	Wk Chg	YoY	Total	Wk Chg	YoY	Total	Wk Chg	YoY	Cat	Dog	Total	Cat	Dog	Total
	5/30/2020	35841	133.8%	0.3%	16523	4.7%	27.3%	52364	68.3%	7.5%	15328	15782	31110	35723	12980	48703

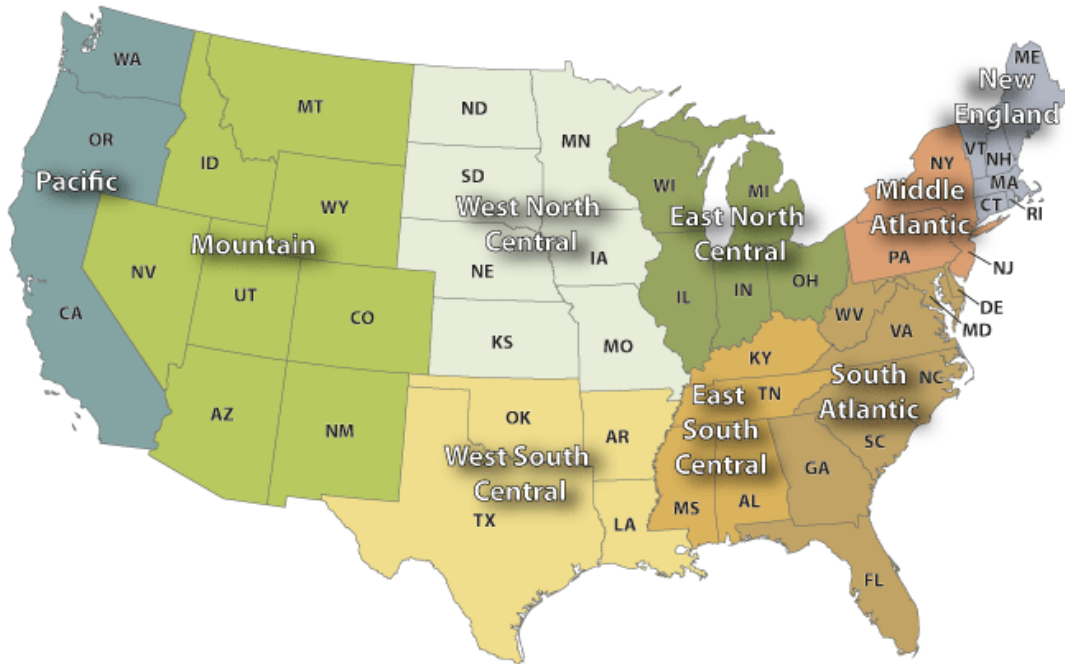
  

In Shelter	Week Starting	Cat			Dog			Total			March 7, 2020			Same Week 2019		
		Total	Wk Chg	YoY	Total	Wk Chg	YoY	Total	Wk Chg	YoY	Cat	Dog	Total	Cat	Dog	Total
	5/30/2020	49333	-1.0%	-32.1%	36112	-33.4%	-34.5%	85445	-17.9%	-33.1%	49844	54191	104035	72624	55171	127795

For more information please contact: Steve Zeidman  
Senior Vice President, Software Solutions  
Pethealth Inc.  
[steve.zeidman@Pethealthinc.com](mailto:steve.zeidman@Pethealthinc.com)

REGIONAL:

U.S. Census Divisions



Pacific (AK, CA, HI, OR, WA):

Intakes	Intake Operation	Cat			Dog			Total		
		Total	Wk Chg	YoY	Total	Wk Chg	YoY	Total	Wk Chg	YoY
<b>Total</b>		2112	46.2%	-32.9%	1228	-38.4%	-37.8%	3340	-2.8%	-34.8%
Owner/Guardian Surrender		492	21.5%	-22.8%	296	-40.9%	-36.5%	788	-13.0%	-28.6%
Return		30	-43.4%	-50.8%	55	-45.5%	-33.7%	85	-44.8%	-41.0%
Seized / Custody		89	-3.3%	-51.9%	155	-26.9%	-33.2%	244	-19.7%	-41.5%
Stray		1181	64.9%	-30.8%	550	-23.7%	-33.7%	1731	20.5%	-31.8%
Transfer In		320	78.8%	-42.5%	172	-62.4%	-52.5%	492	-22.6%	-46.5%

March 7-13, 2020    Same Week 2019

March 7-13, 2020			Same Week 2019		
Cat	Dog	Total	Cat	Dog	Total
1445	1992	3437	3147	1973	5120
405	501	906	637	466	1103
53	101	154	61	83	144
92	212	304	185	232	417
716	721	1437	1707	830	2537
179	457	636	557	362	919

Outcomes	Outcome Operation	Cat			Dog			Total		
		Total	Wk Chg	YoY	Total	Wk Chg	YoY	Total	Wk Chg	YoY
<b>Total</b>		1531	14.9%	-39.1%	1284	-34.8%	-37.2%	2815	-14.7%	-38.3%
Adoption		1029	21.9%	-17.0%	664	-33.9%	-36.4%	1693	-8.4%	-25.9%
Died		39	225.0%	-57.1%	11	10.0%	-15.4%	50	127.3%	-51.9%
Euthanasia		178	-33.1%	-78.7%	123	-50.0%	-64.5%	301	-41.2%	-74.5%
Return to Owner/Guardian		38	-52.5%	-49.3%	268	-18.5%	-27.8%	306	-25.2%	-31.4%
Transfer Out		247	88.5%	-10.5%	218	-42.6%	-19.9%	465	-9.0%	-15.1%

March 7-13, 2020    Same Week 2019

March 7-13, 2020			Same Week 2019		
Cat	Dog	Total	Cat	Dog	Total
1333	1969	3302	2516	2046	4562
844	1004	1848	1240	1044	2284
12	10	22	91	13	104
266	246	512	834	346	1180
80	329	409	75	371	446
131	380	511	276	272	548

Foster Starts	Week Starting	Cat			Dog			Total		
		Total	Wk Chg	YoY	Total	Wk Chg	YoY	Total	Wk Chg	YoY
	5/30/2020	939	218.3%	-18.8%	256	-29.9%	-12.0%	1195	81.1%	-17.5%

March 7, 2020    Same Week 2019

March 7, 2020			Same Week 2019		
Cat	Dog	Total	Cat	Dog	Total
295	365	660	1157	291	1448

Total Inventory	Week Starting	Cat			Dog			Total		
		Total	Wk Chg	YoY	Total	Wk Chg	YoY	Total	Wk Chg	YoY
	5/30/2020	9888	45.6%	-17.0%	4309	-27.6%	-28.9%	14197	11.5%	-21.0%

March 7, 2020    Same Week 2019

March 7, 2020			Same Week 2019		
Cat	Dog	Total	Cat	Dog	Total
6789	5948	12737	11911	6061	17972

In Foster	Week Starting	Cat			Dog			Total		
		Total	Wk Chg	YoY	Total	Wk Chg	YoY	Total	Wk Chg	YoY
	5/30/2020	5001	189.2%	8.8%	1409	6.7%	36.3%	6410	110.2%	13.8%

March 7, 2020    Same Week 2019

March 7, 2020			Same Week 2019		
Cat	Dog	Total	Cat	Dog	Total
1729	1320	3049	4597	1034	5631

In Shelter	Week Starting	Cat			Dog			Total		
		Total	Wk Chg	YoY	Total	Wk Chg	YoY	Total	Wk Chg	YoY
	5/30/2020	4887	-3.4%	-33.2%	2900	-37.3%	-42.3%	7787	-19.6%	-36.9%

March 7, 2020    Same Week 2019

March 7, 2020			Same Week 2019		
Cat	Dog	Total	Cat	Dog	Total
5060	4628	9688	7314	5027	12341



## Mountain (AZ, CO, ID, MT, NM, NV, UT, WY):

Intakes	Intake Operation	Cat			Dog			Total		
		Total	Wk Chg	YoY	Total	Wk Chg	YoY	Total	Wk Chg	YoY
<b>Total</b>		1249	61.0%	-32.4%	1022	-30.5%	-38.6%	2271	1.1%	-35.4%
	Owner/Guardian Surrender	358	49.2%	-17.7%	236	-25.6%	-41.9%	594	6.6%	-29.4%
	Return	40	-18.4%	-32.2%	66	-21.4%	-39.4%	106	-20.3%	-36.9%
	Seized / Custody	79	3.9%	-16.8%	145	-31.3%	-36.4%	224	-22.0%	-30.7%
	Stray	572	85.1%	-33.5%	303	-26.8%	-37.5%	875	21.0%	-34.9%
	Transfer In	200	96.1%	-50.0%	272	-38.7%	-37.8%	472	-13.6%	-43.6%

March 7-13, 2020

Same Week 2019

March 7-13, 2020			Same Week 2019		
Cat	Dog	Total	Cat	Dog	Total
776	1470	2246	1849	1665	3514
240	317	557	435	406	841
49	84	133	59	109	168
76	211	287	95	228	323
309	414	723	860	485	1345
102	444	546	400	437	837

Outcomes	Outcome Operation	Cat			Dog			Total		
		Total	Wk Chg	YoY	Total	Wk Chg	YoY	Total	Wk Chg	YoY
<b>Total</b>		744	-12.6%	-44.7%	986	-37.3%	-36.8%	1730	-28.6%	-40.5%
	Adoption	547	-9.4%	-40.8%	608	-30.9%	-29.3%	1155	-22.2%	-35.3%
	Died	22	69.2%	-62.7%	8	60.0%	-20.0%	30	66.7%	-56.5%
	Euthanasia	77	-23.8%	-64.5%	49	-37.2%	-70.7%	126	-29.6%	-67.2%
	Return to Owner/Guardian	25	8.7%	-44.4%	249	-28.0%	-37.8%	274	-25.7%	-38.4%
	Transfer Out	73	-33.6%	-27.0%	72	-72.6%	-41.9%	145	-61.1%	-35.3%

March 7-13, 2020

Same Week 2019

March 7-13, 2020			Same Week 2019		
Cat	Dog	Total	Cat	Dog	Total
851	1572	2423	1345	1561	2906
604	880	1484	924	860	1784
13	5	18	59	10	69
101	78	179	217	167	384
23	346	369	45	400	445
110	263	373	100	124	224

Foster Starts	Week Starting	Cat			Dog			Total		
		Total	Wk Chg	YoY	Total	Wk Chg	YoY	Total	Wk Chg	YoY
	5/30/2020	455	252.7%	-37.2%	137	7.0%	-20.3%	592	130.4%	-33.9%

March 7-13, 2020

Same Week 2019

March 7-13, 2020			Same Week 2019		
Cat	Dog	Total	Cat	Dog	Total
129	128	257	724	172	896

Total Inventory	Week Starting	Cat			Dog			Total		
		Total	Wk Chg	YoY	Total	Wk Chg	YoY	Total	Wk Chg	YoY
	5/30/2020	6188	20.4%	-25.1%	4356	-19.2%	-17.4%	10544	0.1%	-22.1%

March 7, 2020

Same Week 2019

March 7, 2020			Same Week 2019		
Cat	Dog	Total	Cat	Dog	Total
5140	5391	10531	8266	5273	13539

In Foster	Week Starting	Cat			Dog			Total		
		Total	Wk Chg	YoY	Total	Wk Chg	YoY	Total	Wk Chg	YoY
	5/30/2020	2357	115.3%	-23.1%	979	-11.6%	10.0%	3336	51.4%	-15.7%

March 7, 2020

Same Week 2019

March 7, 2020			Same Week 2019		
Cat	Dog	Total	Cat	Dog	Total
1095	1108	2203	3065	890	3955

In Shelter	Week Starting	Cat			Dog			Total		
		Total	Wk Chg	YoY	Total	Wk Chg	YoY	Total	Wk Chg	YoY
	5/30/2020	3831	-5.3%	-26.3%	3377	-21.2%	-23.0%	7208	-13.4%	-24.8%

March 7, 2020

Same Week 2019

March 7, 2020			Same Week 2019		
Cat	Dog	Total	Cat	Dog	Total
4045	4283	8328	5201	4383	9584

## West North Central (IA, KS, MN, MO, ND, NE, SD):

Intakes	Intake Operation	Cat			Dog			Total		
		Total	Wk Chg	YoY	Total	Wk Chg	YoY	Total	Wk Chg	YoY
<b>Total</b>		1133	15.5%	-28.6%	841	-34.4%	-36.7%	1974	-12.8%	-32.3%
	Owner/Guardian Surrender	393	-3.4%	-22.6%	287	-17.5%	-19.4%	680	-9.9%	-21.3%
	Return	31	-40.4%	-35.4%	58	-43.1%	-31.0%	89	-42.2%	-32.6%
	Seized / Custody	47	2.2%	-44.7%	115	10.6%	-43.9%	162	8.0%	-44.1%
	Stray	521	51.5%	-25.8%	254	-34.0%	-22.6%	775	6.3%	-24.8%
	Transfer In	141	6.8%	-42.2%	127	-63.0%	-64.2%	268	-43.6%	-55.3%

March 7-13, 2020

Same Week 2019

March 7-13, 2020			Same Week 2019		
Cat	Dog	Total	Cat	Dog	Total
981	1282	2263	1587	1328	2915
407	348	755	508	356	864
52	102	154	48	84	132
46	104	150	85	205	290
344	385	729	702	328	1030
132	343	475	244	355	599

Outcomes	Outcome Operation	Cat			Dog			Total		
		Total	Wk Chg	YoY	Total	Wk Chg	YoY	Total	Wk Chg	YoY
<b>Total</b>		889	-12.4%	-24.5%	860	-33.1%	-39.6%	1749	-24.0%	-32.8%
	Adoption	575	-17.9%	-27.4%	525	-39.0%	-41.1%	1100	-29.5%	-34.7%
	Died	42	180.0%	-17.6%	5	-58.3%	-44.4%	47	74.1%	-21.7%
	Euthanasia	94	-36.1%	-32.4%	63	-31.5%	-49.6%	157	-34.3%	-40.5%
	Return to Owner/Guardian	37	-19.6%	2.8%	197	-22.7%	-38.2%	234	-22.3%	-34.1%
	Transfer Out	141	31.8%	-11.3%	70	7.7%	-12.5%	211	22.7%	-11.7%

March 7-13, 2020

Same Week 2019

March 7-13, 2020			Same Week 2019		
Cat	Dog	Total	Cat	Dog	Total
1015	1285	2300	1177	1425	2602
700	861	1561	792	892	1684
15	12	27	51	9	60
147	92	239	139	125	264
46	255	301	36	319	355
107	65	172	159	80	239

Foster Starts	Week Starting	Cat			Dog			Total		
		Total	Wk Chg	YoY	Total	Wk Chg	YoY	Total	Wk Chg	YoY
	5/30/2020	379	122.9%	-13.5%	200	-1.0%	38.9%	579	55.6%	-0.5%

March 7-13, 2020

Same Week 2019

March 7-13, 2020			Same Week 2019		
Cat	Dog	Total	Cat	Dog	Total
170	202	372	438	144	582

Total Inventory	Week Starting	Cat			Dog			Total		
		Total	Wk Chg	YoY	Total	Wk Chg	YoY	Total	Wk Chg	YoY
	5/30/2020	6747	12.1%	-6.1%	3619	-15.6%	-14.0%	10366	0.5%	-9.0%

March 7, 2020

Same Week 2019

March 7, 2020			Same Week 2019		
Cat	Dog	Total	Cat	Dog	Total
6021	4289	10310	7182	4208	11390

In Foster	Week Starting	Cat			Dog			Total		
		Total	Wk Chg	YoY	Total	Wk Chg	YoY	Total	Wk Chg	YoY
	5/30/2020	2873	66.6%	22.7%	1691	18.3%	69.1%	4564	44.7%	36.6%

March 7, 2020

Same Week 2019

March 7, 2020			Same Week 2019		
Cat	Dog	Total	Cat	Dog	Total
1724	1430	3154	2341	1000	3341

In Shelter	Week Starting	Cat			Dog			Total		
		Total	Wk Chg	YoY	Total	Wk Chg	YoY	Total	Wk Chg	YoY
	5/30/2020	3874	-9.8%	-20.0%	1928	-32.6%	-39.9%	5802	-18.9%	-27.9%

March 7, 2020

Same Week 2019

March 7, 2020			Same Week 2019		
Cat	Dog	Total	Cat	Dog	Total
4297	2859	7156	4841	3208	8049

## West South Central (AR, LA, OK, TX):

Intakes	Intake Operation	Cat			Dog			Total			March 7 - 13, 2020			Same Week 2019		
		Total	Wk Chg	YoY	Total	Wk Chg	YoY	Total	Wk Chg	YoY	Cat	Dog	Total	Cat	Dog	Total
<b>Total</b>		2759	58.9%	-25.1%	2295	-35.0%	-41.5%	5054	-4.0%	-33.6%	1736	3531	5267	3685	3926	7611
Owner/Guardian Surrender		517	24.6%	-31.0%	674	-17.8%	-32.0%	1191	-3.6%	-31.6%	415	820	1235	749	991	1740
Return		41	-29.3%	-42.3%	129	-31.0%	-32.8%	170	-30.6%	-35.4%	58	187	245	71	192	263
Seized / Custody		255	78.3%	5.8%	296	-41.4%	-48.7%	551	-15.0%	-32.6%	143	505	648	241	577	818
Stray		1678	82.4%	-27.8%	840	-46.5%	-50.0%	2518	1.1%	-37.1%	920	1570	2490	2325	1680	4005
Transfer In		268	34.0%	-10.4%	356	-20.7%	-26.7%	624	-3.9%	-20.5%	200	449	649	299	486	785

Outcomes	Outcome Operation	Cat			Dog			Total			March 7 - 13, 2020			Same Week 2019		
		Total	Wk Chg	YoY	Total	Wk Chg	YoY	Total	Wk Chg	YoY	Cat	Dog	Total	Cat	Dog	Total
<b>Total</b>		2094	58.6%	-27.4%	2384	-32.3%	-34.9%	4478	-7.5%	-31.6%	1320	3523	4843	2884	3664	6548
Adoption		1033	35.4%	-17.1%	1220	-28.7%	-29.3%	2253	-8.9%	-24.2%	763	1711	2474	1246	1726	2972
Died		92	240.7%	-64.8%	21	-58.8%	-67.2%	113	44.9%	-65.2%	27	51	78	261	64	325
Euthanasia		441	129.7%	-49.4%	212	-44.6%	-70.4%	653	13.6%	-58.9%	192	383	575	872	716	1588
Return to Owner/Guardian		53	12.8%	23.3%	343	-44.2%	-34.9%	396	-40.2%	-30.5%	47	615	662	43	527	570
Transfer Out		475	63.2%	2.8%	588	-22.9%	-6.8%	1063	0.9%	-2.7%	291	763	1054	462	631	1093

Foster Starts	Week Starting	Cat			Dog			Total			March 7 - 13, 2020			Same Week 2019		
		Total	Wk Chg	YoY	Total	Wk Chg	YoY	Total	Wk Chg	YoY	Cat	Dog	Total	Cat	Dog	Total
	5/30/2020	952	192.9%	-18.1%	454	-26.1%	-24.0%	1406	49.7%	-20.1%	325	614	939	1162	597	1759

Total Inventory	Week Starting	Cat			Dog			Total			March 7, 2020			Same Week 2019		
		Total	Wk Chg	YoY	Total	Wk Chg	YoY	Total	Wk Chg	YoY	Cat	Dog	Total	Cat	Dog	Total
	5/30/2020	10380	41.8%	-28.0%	10001	-29.2%	-27.5%	20381	-5.0%	-27.8%	7320	14123	21443	14425	13804	28229

In Foster	Week Starting	Cat			Dog			Total			March 7, 2020			Same Week 2019		
		Total	Wk Chg	YoY	Total	Wk Chg	YoY	Total	Wk Chg	YoY	Cat	Dog	Total	Cat	Dog	Total
	5/30/2020	5327	100.3%	-0.8%	4051	5.2%	21.5%	9378	44.1%	7.7%	2660	3849	6509	5372	3333	8705

In Shelter	Week Starting	Cat			Dog			Total			March 7, 2020			Same Week 2019		
		Total	Wk Chg	YoY	Total	Wk Chg	YoY	Total	Wk Chg	YoY	Cat	Dog	Total	Cat	Dog	Total
	5/30/2020	5053	8.4%	-44.2%	5950	-42.1%	-43.2%	11003	-26.3%	-43.6%	4660	10274	14934	9053	10471	19524

## East North Central (IL, IN, MI, OH, WI):

Intakes	Intake Operation	Cat			Dog			Total			March 7 - 13, 2020			Same Week 2019		
		Total	Wk Chg	YoY	Total	Wk Chg	YoY	Total	Wk Chg	YoY	Cat	Dog	Total	Cat	Dog	Total
<b>Total</b>		2598	32.3%	-26.4%	1732	-31.1%	-39.8%	4330	-3.3%	-32.4%	1963	2514	4477	3528	2878	6406
Owner/Guardian Surrender		790	-2.3%	-26.6%	403	-34.2%	-37.2%	1193	-16.0%	-30.6%	809	612	1421	1077	642	1719
Return		81	-31.4%	-40.4%	130	-27.0%	-40.4%	211	-28.7%	-40.4%	118	178	296	136	218	354
Seized / Custody		89	32.8%	-46.4%	160	-19.6%	-41.8%	249	-6.4%	-43.5%	67	199	266	166	275	441
Stray		1334	84.3%	-23.6%	509	-23.7%	-38.2%	1843	32.5%	-28.2%	724	667	1391	1745	823	2568
Transfer In		304	24.1%	-24.8%	530	-38.2%	-42.4%	834	-24.4%	-37.0%	245	858	1103	404	920	1324

Outcomes	Outcome Operation	Cat			Dog			Total			March 7 - 13, 2020			Same Week 2019		
		Total	Wk Chg	YoY	Total	Wk Chg	YoY	Total	Wk Chg	YoY	Cat	Dog	Total	Cat	Dog	Total
<b>Total</b>		1963	0.7%	-23.4%	1940	-30.6%	-29.6%	3903	-17.8%	-26.6%	1949	2797	4746	2563	2755	5318
Adoption		1440	-2.6%	-19.4%	1295	-31.6%	-26.3%	2735	-18.8%	-22.8%	1478	1892	3370	1786	1758	3544
Died		53	120.8%	-44.2%	10	-65.5%	-33.3%	63	18.9%	-42.7%	24	29	53	95	15	110
Euthanasia		189	6.2%	-48.2%	113	-43.2%	-53.3%	302	-19.9%	-50.2%	178	199	377	365	242	607
Return to Owner/Guardian		55	-34.5%	-68.0%	364	-12.9%	-28.9%	419	-16.5%	-38.7%	84	418	502	172	512	684
Transfer Out		226	22.2%	55.9%	158	-39.0%	-30.7%	384	-13.5%	2.9%	185	259	444	145	228	373

Foster Starts	Week Starting	Cat			Dog			Total			March 7 - 13, 2020			Same Week 2019		
		Total	Wk Chg	YoY	Total	Wk Chg	YoY	Total	Wk Chg	YoY	Cat	Dog	Total	Cat	Dog	Total
	5/30/2020	1015	128.6%	-10.6%	395	-29.8%	-21.2%	1410	40.0%	-13.8%	444	563	1007	1135	501	1636

Total Inventory	Week Starting	Cat			Dog			Total			March 7, 2020			Same Week 2019		
		Total	Wk Chg	YoY	Total	Wk Chg	YoY	Total	Wk Chg	YoY	Cat	Dog	Total	Cat	Dog	Total
	5/30/2020	15384	21.7%	-19.3%	8298	-22.7%	-16.3%	23682	1.3%	-18.3%	12640	10729	23369	19056	9915	28971

In Foster	Week Starting	Cat			Dog			Total			March 7, 2020			Same Week 2019		
		Total	Wk Chg	YoY	Total	Wk Chg	YoY	Total	Wk Chg	YoY	Cat	Dog	Total	Cat	Dog	Total
	5/30/2020	5184	127.1%	-3.6%	2749	4.4%	38.2%	7933	61.4%	7.7%	2283	2632	4915	5375	1989	7364

In Shelter	Week Starting	Cat			Dog			Total			March 7, 2020			Same Week 2019		
		Total	Wk Chg	YoY	Total	Wk Chg	YoY	Total	Wk Chg	YoY	Cat	Dog	Total	Cat	Dog	Total
	5/30/2020	10200	-1.5%	-25.4%	5549	-31.5%	-30.0%	15749	-14.7%	-27.1%	10357	8097	18454	13681	7926	21607



## East South Central (AL, KY, MS, TN):

	March 7-13, 2020									Same Week 2019			
	Cat			Dog			Total			Cat	Dog	Total	
Intakes	Intake Operation	Total	Wk Chg	YoY	Total	Wk Chg	YoY	Total	Wk Chg	YoY			
	<b>Total</b>	1082	114.3%	-38.5%	866	-33.7%	-43.2%	1948	7.6%	-40.7%	505	1306	1811
	Owner/Guardian Surrender	426	100.9%	-41.9%	303	-43.2%	-46.9%	729	-2.1%	-44.1%	212	533	745
	Return	15	-40.0%	-55.9%	53	20.5%	-15.9%	68	-1.4%	-29.9%	25	44	69
	Seized / Custody	41	70.8%	36.7%	72	5.9%	41.2%	113	22.8%	39.5%	24	68	92
	Stray	488	154.2%	-41.3%	291	-37.7%	-54.2%	779	18.2%	-46.9%	192	467	659
	Transfer In	112	115.4%	-14.5%	147	-24.2%	-27.6%	259	5.3%	-22.5%	52	194	246
Outcomes	Outcome Operation	Total	Wk Chg	YoY	Total	Wk Chg	YoY	Total	Wk Chg	YoY			
	<b>Total</b>	794	53.6%	-44.1%	953	-31.7%	-29.7%	1747	-8.7%	-37.1%	517	1396	1913
	Adoption	408	26.3%	-32.3%	504	0.0%	0.0%	912	10.3%	-17.6%	323	504	827
	Died	21	950.0%	-55.3%	11	0.0%	-8.3%	32	146.2%	-45.8%	2	11	13
	Euthanasia	214	140.4%	-64.7%	110	-39.2%	-42.1%	324	20.0%	-59.3%	89	181	270
	Return to Owner/Guardian	10	-16.7%	-50.0%	108	-20.6%	-28.9%	118	-20.3%	-31.4%	12	136	148
	Transfer Out	141	54.9%	-1.4%	220	-61.0%	-55.8%	361	-44.9%	-43.7%	91	564	655
Foster Starts	Week Starting	Total	Wk Chg	YoY	Total	Wk Chg	YoY	Total	Wk Chg	YoY			
	5/30/2020	270	255.3%	-17.9%	156	-30.7%	-50.3%	426	41.5%	-33.7%	76	225	301
Total Inventory	Week Starting	Total	Wk Chg	YoY	Total	Wk Chg	YoY	Total	Wk Chg	YoY			
	5/30/2020	4931	41.8%	-11.8%	5426	-14.4%	-13.3%	10357	5.5%	-12.6%	3478	6339	9817
In Foster	Week Starting	Total	Wk Chg	YoY	Total	Wk Chg	YoY	Total	Wk Chg	YoY			
	5/30/2020	1373	138.8%	3.5%	1152	-9.4%	-4.7%	2525	36.8%	-0.4%	575	1271	1846
In Shelter	Week Starting	Total	Wk Chg	YoY	Total	Wk Chg	YoY	Total	Wk Chg	YoY			
	5/30/2020	3558	22.6%	-16.6%	4274	-15.7%	-15.4%	7832	-1.7%	-15.9%	2903	5068	7971

## New England (CT, MA, ME, NH, RI, VT):

	March 7-13, 2020									Same Week 2019			
	Cat			Dog			Total			Cat	Dog	Total	
Intakes	Intake Operation	Total	Wk Chg	YoY	Total	Wk Chg	YoY	Total	Wk Chg	YoY			
	<b>Total</b>	516	-11.2%	-33.0%	349	-34.6%	-38.8%	865	-22.4%	-35.4%	581	534	1115
	Owner/Guardian Surrender	191	-8.2%	-10.3%	56	-18.8%	-51.3%	247	-10.8%	-24.7%	208	69	277
	Return	10	-63.0%	-76.2%	15	-57.1%	-54.5%	25	-59.7%	-66.7%	27	35	62
	Seized / Custody	3	-40.0%	-50.0%	9	-50.0%	-25.0%	12	-47.8%	-33.3%	5	18	23
	Stray	142	10.9%	-45.2%	80	-19.2%	-16.7%	222	-2.2%	-37.5%	128	99	227
	Transfer In	170	-20.2%	-32.0%	189	-39.6%	-39.8%	359	-31.7%	-36.3%	213	313	526
Outcomes	Outcome Operation	Total	Wk Chg	YoY	Total	Wk Chg	YoY	Total	Wk Chg	YoY			
	<b>Total</b>	369	-20.3%	-39.5%	341	-27.4%	-35.9%	710	-23.9%	-37.8%	463	470	933
	Adoption	334	-16.7%	-32.1%	265	-30.6%	-33.2%	599	-23.5%	-32.6%	401	382	783
	Died	5	-37.5%	-44.4%	4	300.0%		9	0.0%	0.0%	8	1	9
	Euthanasia	18	-40.0%	-56.1%	19	-5.0%	-48.6%	37	-26.0%	-52.6%	30	20	50
	Return to Owner/Guardian	8	-42.9%	-75.0%	49	-2.0%	-37.2%	57	-10.9%	-48.2%	14	50	64
	Transfer Out	4	-60.0%	-88.9%	4	-76.5%	-80.0%	8	-70.4%	-85.7%	10	17	27
Foster Starts	Week Starting	Total	Wk Chg	YoY	Total	Wk Chg	YoY	Total	Wk Chg	YoY			
	5/30/2020	221	123.2%	-16.0%	70	6.1%	-38.1%	291	76.4%	-22.6%	99	66	165
Total Inventory	Week Starting	Total	Wk Chg	YoY	Total	Wk Chg	YoY	Total	Wk Chg	YoY			
	5/30/2020	2517	9.0%	-27.0%	1255	-25.9%	-31.7%	3772	-5.8%	-28.6%	2310	1694	4004
In Foster	Week Starting	Total	Wk Chg	YoY	Total	Wk Chg	YoY	Total	Wk Chg	YoY			
	5/30/2020	978	65.8%	-10.9	369	-6.6%	-19.1	1347	36.8%	-13.3%	590	395	985
In Shelter	Week Starting	Total	Wk Chg	YoY	Total	Wk Chg	YoY	Total	Wk Chg	YoY			
	5/30/2020	1539	-10.5%	-34.5%	886	-31.8%	-35.8%	2425	-19.7%	-35.0%	1720	1299	3019

## Middle Atlantic (NJ, NY, PA):

Intakes	Intake Operation	Cat			Dog			Total			March 7-13, 2020			Same Week 2019		
		Total	Wk Chg	YoY	Total	Wk Chg	YoY	Total	Wk Chg	YoY	Cat	Dog	Total	Cat	Dog	Total
<b>Total</b>		1442	5.1%	-38.7%	790	-43.5%	-42.0%	2232	-19.5%	-39.9%	1372	1399	2771	2353	1363	3716
	Owner/Guardian Surrender	320	-30.0%	-39.7%	151	-55.5%	-50.3%	471	-40.8%	-43.6%	457	339	796	531	304	835
	Return	50	-39.0%	-35.1%	58	-38.3%	-28.4%	108	-38.6%	-31.6%	82	94	176	77	81	158
	Seized / Custody	55	14.6%	-59.6%	34	-46.9%	-65.7%	89	-20.5%	-62.1%	48	64	112	136	99	235
	Stray	828	31.0%	-41.9%	231	-45.9%	-49.8%	1059	0.0%	-43.8%	632	427	1059	1426	460	1886
	Transfer In	189	23.5%	3.3%	316	-33.5%	-24.6%	505	-19.6%	-16.1%	153	475	628	183	419	602

Outcomes	Outcome Operation	Cat			Dog			Total			March 7-13, 2020			Same Week 2019		
		Total	Wk Chg	YoY	Total	Wk Chg	YoY	Total	Wk Chg	YoY	Cat	Dog	Total	Cat	Dog	Total
<b>Total</b>		960	-25.3%	-42.6%	793	-41.2%	-42.5%	1753	-33.5%	-42.5%	1286	1349	2635	1672	1378	3050
	Adoption	677	-22.9%	-34.3%	582	-40.0%	-35.1%	1259	-31.9%	-34.7%	878	970	1848	1031	897	1928
	Died	44	41.9%	-17.0%	10	233.3%	66.7%	54	58.8%	-8.5%	31	3	34	53	6	59
	Euthanasia	112	-7.4%	-60.8%	57	-42.4%	-62.7%	169	-23.2%	-61.5%	121	99	220	286	153	439
	Return to Owner/Guardian	25	-13.8%	-39.0%	122	-41.6%	-50.4%	147	-38.2%	-48.8%	29	209	238	41	246	287
	Transfer Out	102	-55.1%	-60.9%	22	-67.6%	-71.1%	124	-58.0%	-63.2%	227	68	295	261	76	337

Foster Starts	Week Starting	Cat			Dog			Total			March 7-13, 2020			Same Week 2019		
		Total	Wk Chg	YoY	Total	Wk Chg	YoY	Total	Wk Chg	YoY	Cat	Dog	Total	Cat	Dog	Total
	5/30/2020	795	189.1%	0.4%	194	-13.4%	8.4%	989	98.2%	1.9%	275	224	499	792	179	971

Total Inventory	Week Starting	Cat			Dog			Total			March 7, 2020			Same Week 2019		
		Total	Wk Chg	YoY	Total	Wk Chg	YoY	Total	Wk Chg	YoY	Cat	Dog	Total	Cat	Dog	Total
	5/30/2020	9179	27.1%	-24.3%	3587	-30.1%	-33.2%	12766	3.3%	-27.1%	7221	5133	12354	12132	5368	17500

In Foster	Week Starting	Cat			Dog			Total			March 7, 2020			Same Week 2019		
		Total	Wk Chg	YoY	Total	Wk Chg	YoY	Total	Wk Chg	YoY	Cat	Dog	Total	Cat	Dog	Total
	5/30/2020	4374	150.2%	7.8%	1229	14.4%	24.8%	5603	98.5%	11.1%	1748	1074	2822	4059	985	5044

In Shelter	Week Starting	Cat			Dog			Total			March 7, 2020			Same Week 2019		
		Total	Wk Chg	YoY	Total	Wk Chg	YoY	Total	Wk Chg	YoY	Cat	Dog	Total	Cat	Dog	Total
	5/30/2020	4805	-12.2%	-40.5%	2358	-41.9%	-46.2%	7163	-24.9%	-42.5%	5473	4059	9532	8073	4383	12456

## South Atlantic (DE, FL, GA, MD, NC, SC, VA, WV):

Intakes	Intake Operation	Cat			Dog			Total			March 7-13, 2020			Same Week 2019		
		Total	Wk Chg	YoY	Total	Wk Chg	YoY	Total	Wk Chg	YoY	Cat	Dog	Total	Cat	Dog	Total
<b>Total</b>		5018	65.1%	-21.4%	2640	-34.4%	-40.2%	7658	8.4%	-29.1%	3040	4025	7065	6387	4418	10805
	Owner/Guardian Surrender	1478	76.0%	-2.9%	733	-28.4%	-29.0%	2211	18.6%	-13.5%	840	1024	1864	1522	1033	2555
	Return	77	-25.2%	-40.8%	120	-35.1%	-48.3%	197	-31.6%	-45.6%	103	185	288	130	232	362
	Seized / Custody	391	33.9%	-26.8%	454	-31.5%	-39.5%	845	-11.5%	-34.2%	292	663	955	534	751	1285
	Stray	2430	95.7%	-28.5%	938	-23.5%	-40.2%	3368	36.5%	-32.2%	1242	1226	2468	3397	1568	4965
	Transfer In	642	14.0%	-20.1%	395	-57.4%	-52.6%	1037	-30.4%	-36.7%	563	927	1490	804	834	1638

Outcomes	Outcome Operation	Cat			Dog			Total			March 7-13, 2020			Same Week 2019		
		Total	Wk Chg	YoY	Total	Wk Chg	YoY	Total	Wk Chg	YoY	Cat	Dog	Total	Cat	Dog	Total
<b>Total</b>		3346	14.9%	-30.6%	2768	-31.2%	-35.9%	6114	-11.8%	-33.1%	2912	4022	6934	4824	4321	9145
	Adoption	1836	13.0%	-19.4%	1444	-30.5%	-34.9%	3280	-11.4%	-27.0%	1625	2079	3704	2278	2217	4495
	Died	146	224.4%	-38.7%	24	-22.6%	-14.3%	170	123.7%	-36.1%	45	31	76	238	28	266
	Euthanasia	495	-0.6%	-62.4%	239	-40.5%	-61.4%	734	-18.4%	-62.1%	498	402	900	1318	619	1937
	Return to Owner/Guardian	58	-17.1%	-45.8%	445	-27.0%	-26.1%	503	-26.0%	-29.1%	70	610	680	107	602	709
	Transfer Out	811	20.3%	-8.2%	616	-31.6%	-28.0%	1427	-9.3%	-17.9%	674	900	1574	883	855	1738

Foster Starts	Week Starting	Cat			Dog			Total			March 7-13, 2020			Same Week 2019		
		Total	Wk Chg	YoY	Total	Wk Chg	YoY	Total	Wk Chg	YoY	Cat	Dog	Total	Cat	Dog	Total
	5/30/2020	2092	223.8%	11.5%	488	-28.0%	-6.9%	2580	94.9%	7.5%	646	678	1324	1877	524	2401

Total Inventory	Week Starting	Cat			Dog			Total			March 7, 2020			Same Week 2019		
		Total	Wk Chg	YoY	Total	Wk Chg	YoY	Total	Wk Chg	YoY	Cat	Dog	Total	Cat	Dog	Total
	5/30/2020	19960	40.0%	-24.2%	11784	-27.8%	-23.6%	31744	3.8%	-24.0%	14253	16327	30580	26334	15425	41759

In Foster	Week Starting	Cat			Dog			Total			March 7, 2020			Same Week 2019		
		Total	Wk Chg	YoY	Total	Wk Chg	YoY	Total	Wk Chg	YoY	Cat	Dog	Total	Cat	Dog	Total
	5/30/2020	8374	186.4%	-1.4%	2894	7.1%	38.9%	11268	100.2%	6.6%	2924	2703	5627	8490	2084	10574

In Shelter	Week Starting	Cat			Dog			Total			March 7, 2020			Same Week 2019		
		Total	Wk Chg	YoY	Total	Wk Chg	YoY	Total	Wk Chg	YoY	Cat	Dog	Total	Cat	Dog	Total
	5/30/2020	11586	2.3%	-35.1%	8890	-34.7%	-33.4%	20476	-17.9%	-34.3%	11329	13624	24953	17844	13341	31185