

**Week 10: May 22, 2020**

The 24Pet® ShelterWatch Report: COVID-19 Impact report is a weekly gauge of U.S. homeless pet populations in the care of animal welfare organizations. Data is aggregated via the PetPoint Animal Management Software, a cloud-based application developed and launched in 2005. PetPoint is the most widely used animal management application in North American animal welfare.

The COVID-19 Impact Report aggregates data from 1191 animal welfare organizations (“AWOs”) in the United States. It compares the weekly data to data from the week before the federal declaration (March 7-13) and same week in 2019.

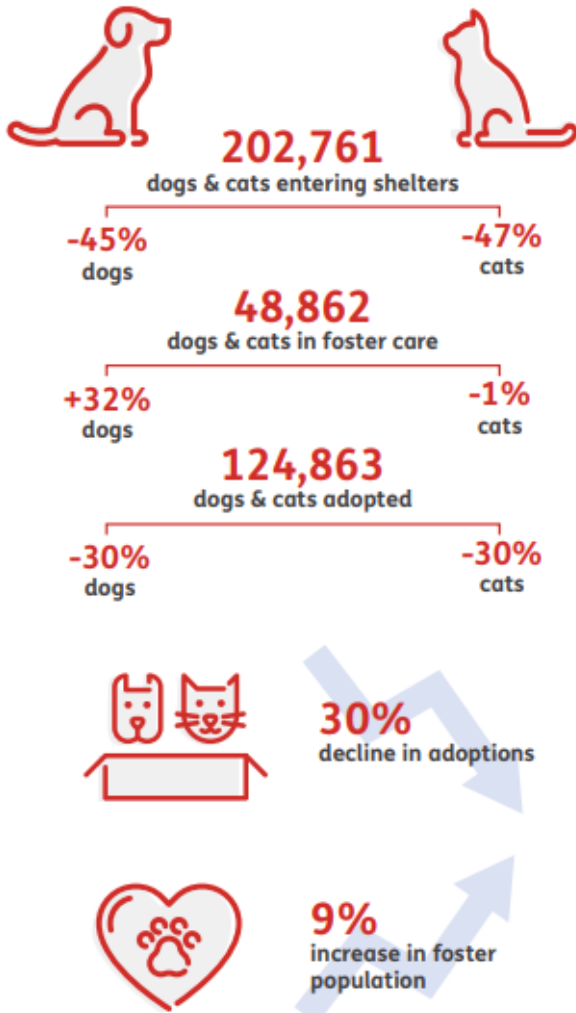
For the purposes here, AWOs are defined as animal control agencies, SPCAs, humane societies and rescue groups. Only data from AWOs operating PetPoint during both January 1, 2019 to current have been included. For commentary see: <https://pethealth.force.com/community/s/blog>

## As the world navigates through a new reality, our pet population remains vulnerable and in-need.

Despite temporary closings and reduced shelter capacity, at least 202,761 new animals have arrived in the 1,191 shelters monitored by the 24Pet® ShelterWatch Report since the start of the pandemic. This number is expected to surge in the coming months with an anticipated increase in relinquished and abandoned animals.

March 13 - May 22, 2020 compared to the same period in 2019

### US NATIONAL STATS

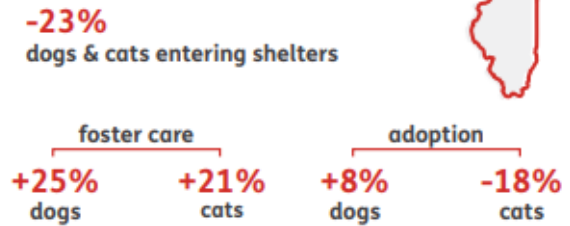


### STATS BY STATE

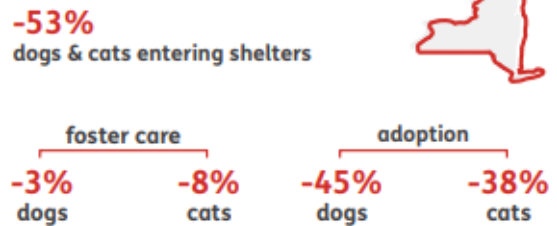
#### CALIFORNIA



#### ILLINOIS



#### NEW YORK



Pethealth Services (USA) Inc. ("24PetWatch") strives to provide accurate and up-to-date material on this 24Pet® ShelterWatch Report (the "Report"). 24PetWatch® assumes no responsibility or does not guarantee as to the accuracy or timeliness of the material provided in this Report. Neither 24PetWatch®, its employees, officers, directors, agents, parent companies or subsidiary companies assume any liability or responsibility for any errors or omissions on any information provided within this Report.

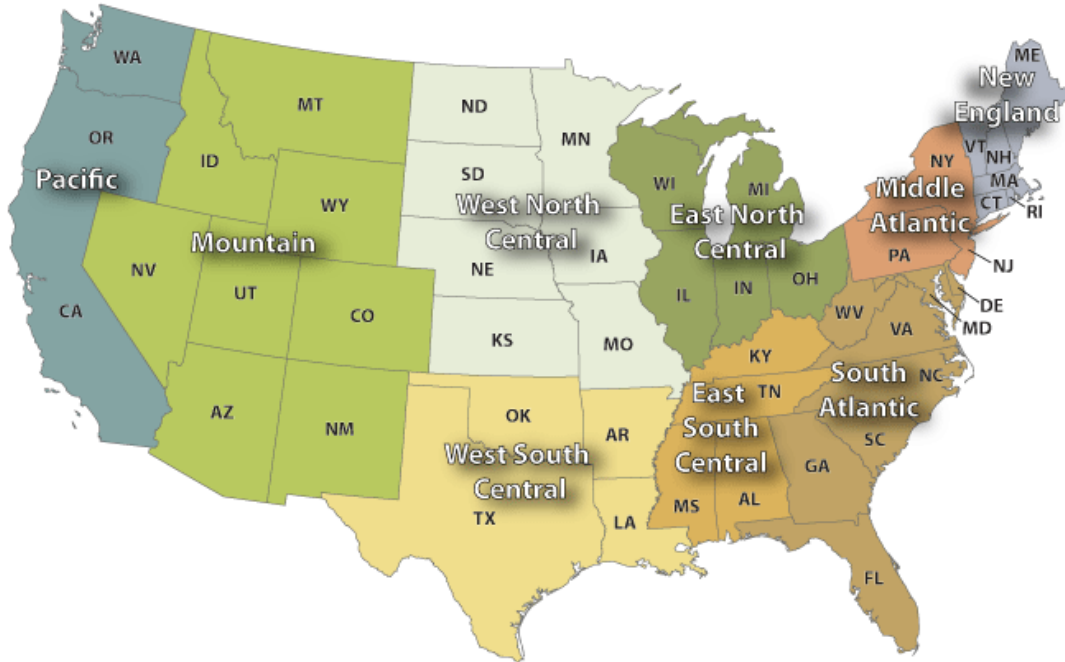
**NATIONAL:**

	Intake Operation	Cat			Dog			Total			March 7-13, 2020			Same Week 2019		
		Total	Wk Chg	YoY	Total	Wk Chg	YoY	Total	Wk Chg	YoY	Cat	Dog	Total	Cat	Dog	Total
<b>Intakes</b>	<b>Total</b>	16140	30.2%	-34.1%	11494	-36.3%	-39.1%	27634	-9.2%	-36.3%	12395	18049	30444	24509	18863	43372
	Owner/Guardian Surrender	4675	17.1%	-28.4%	3000	-34.2%	-34.4%	7675	-10.3%	-30.9%	3994	4558	8552	6530	4570	11100
	Return	341	-39.9%	-40.8%	696	-31.1%	-37.6%	1037	-34.2%	-38.7%	567	1010	1577	576	1116	1692
	Seized / Custody	799	0.8%	-48.7%	1266	-38.1%	-43.3%	2065	-27.2%	-45.5%	793	2045	2838	1556	2233	3789
	Stray	8140	56.4%	-34.4%	4026	-32.6%	-38.7%	12166	8.8%	-35.9%	5204	5977	11181	12402	6569	18971
	Transfer In	2185	18.9%	-36.6%	2506	-43.8%	-42.7%	4691	-25.5%	-40.0%	1837	4459	6296	3445	4375	7820
<b>Outcomes</b>	<b>Total</b>	10523	-9.6%	-39.3%	11969	-34.9%	-38.8%	22492	-25.1%	-39.0%	11641	18382	30023	17327	19551	36878
	Adoption	6744	-11.4%	-27.1%	7098	-31.0%	-34.0%	13842	-22.6%	-30.8%	7611	10283	17894	9252	10757	20009
	Died	335	89.3%	-57.6%	68	-55.6%	-51.1%	403	22.1%	-56.6%	177	153	330	790	139	929
	Euthanasia	1503	-7.3%	-62.6%	980	-42.4%	-59.3%	2483	-25.3%	-61.4%	1622	1700	3322	4024	2405	6429
	Return to Owner/Guardian	271	-33.1%	-50.4%	1979	-33.3%	-37.7%	2250	-33.3%	-39.6%	405	2967	3372	546	3178	3724
	Transfer Out	1670	-8.5%	-38.5%	1844	-43.8%	-40.0%	3514	-31.2%	-39.3%	1826	3279	5105	2715	3072	5787
<b>Foster Starts</b>	<b>Total</b>	6629	170.2%	-14.1%	2507	-18.2%	-2.7%	9136	65.6%	-11.2%	2453	3063	5516	7717	2576	10293
	5/16/2020	6629	170.2%	-14.1%	2507	-18.2%	-2.7%	9136	65.6%	-11.2%	2453	3063	5516	7717	2576	10293
<b>Total Inventory</b>	<b>Total</b>	74355	13.4%	-23.3%	52421	-25.5%	-23.9%	126776	-6.7%	-23.6%	65569	70326	135895	96959	68922	165881
	5/16/2020	74355	13.4%	-23.3%	52421	-25.5%	-23.9%	126776	-6.7%	-23.6%	65569	70326	135895	96959	68922	165881
<b>In Foster</b>	<b>Total</b>	31365	103.7%	-1.2%	17497	10.2%	32.2%	48862	56.3%	8.6%	15395	15873	31268	31760	13234	44994
	5/16/2020	31365	103.7%	-1.2%	17497	10.2%	32.2%	48862	56.3%	8.6%	15395	15873	31268	31760	13234	44994
<b>In Shelter</b>	<b>Total</b>	42990	-14.3%	-34.1%	34924	-35.9%	-37.3%	77914	-25.5%	-35.5%	50174	54453	104627	65199	55688	120887
	5/16/2020	42990	-14.3%	-34.1%	34924	-35.9%	-37.3%	77914	-25.5%	-35.5%	50174	54453	104627	65199	55688	120887

For more information please contact: Steve Zeidman  
 Senior Vice President, Software Solutions  
 Pethealth Inc.  
[steve.zeidman@Pethealthinc.com](mailto:steve.zeidman@Pethealthinc.com)

REGIONAL:

**U.S. Census Divisions**



**Pacific (AK, CA, HI, OR, WA):**

Intakes	Intake Operation	Cat			Dog			Total		
		Total	Wk Chg	YoY	Total	Wk Chg	YoY	Total	Wk Chg	YoY
<b>Total</b>		1813	25.6%	-37.4%	1085	-45.5%	-48.4%	2898	-15.6%	-42.0%
Owner/Guardian Surrender		389	-4.0%	-30.0%	265	-46.9%	-45.5%	654	-27.7%	-37.2%
Return		24	-54.7%	-64.7%	47	-53.5%	-58.0%	71	-53.9%	-60.6%
Seized / Custody		63	-31.5%	-67.0%	142	-33.0%	-48.2%	205	-32.6%	-55.9%
Stray		1061	48.6%	-33.3%	473	-34.4%	-44.0%	1534	6.9%	-37.0%
Transfer In		276	54.2%	-43.4%	158	-65.4%	-59.2%	434	-31.8%	-50.4%

March 7-13, 2020			Same Week 2019		
Cat	Dog	Total	Cat	Dog	Total
1443	1990	3433	2894	2103	4997
405	499	904	556	486	1042
53	101	154	68	112	180
92	212	304	191	274	465
714	721	1435	1591	844	2435
179	457	636	488	387	875

Outcomes	Outcome Operation	Cat			Dog			Total		
		Total	Wk Chg	YoY	Total	Wk Chg	YoY	Total	Wk Chg	YoY
<b>Total</b>		1333	0.0%	-34.5%	1255	-36.3%	-41.7%	2588	-21.6%	-38.2%
Adoption		744	-11.8%	-31.9%	671	-33.2%	-39.4%	1415	-23.4%	-35.7%
Died		59	391.7%	59.5%	10	0.0%	-23.1%	69	213.6%	38.0%
Euthanasia		204	-23.3%	-67.7%	131	-46.7%	-61.2%	335	-34.6%	-65.5%
Return to Owner/Guardian		24	-70.0%	-68.8%	229	-30.4%	-42.2%	253	-38.1%	-46.5%
Transfer Out		302	130.5%	54.1%	214	-43.7%	-27.7%	516	1.0%	4.9%

March 7-13, 2020			Same Week 2019		
Cat	Dog	Total	Cat	Dog	Total
1333	1969	3302	2035	2151	4186
844	1004	1848	1093	1108	2201
12	10	22	37	13	50
266	246	512	632	338	970
80	329	409	77	396	473
131	380	511	196	296	492

Foster Starts	Week Starting	Cat			Dog			Total		
		Total	Wk Chg	YoY	Total	Wk Chg	YoY	Total	Wk Chg	YoY
	5/16/2020	973	235.5%	-0.1%	234	-35.9%	-22.5%	1207	84.3%	-5.4%

March 7-13, 2020			Same Week 2019		
Cat	Dog	Total	Cat	Dog	Total
290	365	655	974	302	1276

Total Inventory	Week Starting	Cat			Dog			Total		
		Total	Wk Chg	YoY	Total	Wk Chg	YoY	Total	Wk Chg	YoY
	5/16/2020	8994	32.2%	-15.1%	4397	-26.5%	-30.5%	13391	4.7%	-20.8%

March 7, 2020			Same Week 2019		
Cat	Dog	Total	Cat	Dog	Total
6801	5984	12785	10589	6329	16918

In Foster	Week Starting	Cat			Dog			Total		
		Total	Wk Chg	YoY	Total	Wk Chg	YoY	Total	Wk Chg	YoY
	5/16/2020	4392	155.6%	4.0%	1548	17.3%	51.6%	5940	95.5%	13.3%

March 7, 2020			Same Week 2019		
Cat	Dog	Total	Cat	Dog	Total
1718	1320	3038	4222	1021	5243

In Shelter	Week Starting	Cat			Dog			Total		
		Total	Wk Chg	YoY	Total	Wk Chg	YoY	Total	Wk Chg	YoY
	5/16/2020	4602	-9.5%	-27.7%	2849	-38.9%	-46.3%	7451	-23.6%	-36.2%

March 7, 2020			Same Week 2019		
Cat	Dog	Total	Cat	Dog	Total
5083	4664	9747	6367	5308	11675

## Mountain (AZ, CO, ID, MT, NM, NV, UT, WY):

Intakes	Intake Operation	Cat			Dog			Total		
		Total	Wk Chg	YoY	Total	Wk Chg	YoY	Total	Wk Chg	YoY
	<b>Total</b>	<b>1114</b>	<b>43.4%</b>	<b>-43.9%</b>	<b>1102</b>	<b>-24.9%</b>	<b>-32.9%</b>	<b>2216</b>	<b>-1.3%</b>	<b>-38.9%</b>
	Owner/Guardian Surrender	375	55.6%	-32.7%	294	-6.7%	-24.2%	669	20.3%	-29.2%
	Return	18	-63.3%	-69.0%	68	-19.0%	-40.4%	86	-35.3%	-50.0%
	Seized / Custody	96	26.3%	-2.0%	144	-31.8%	-28.0%	240	-16.4%	-19.5%
	Stray	476	54.0%	-44.1%	318	-23.2%	-35.9%	794	9.8%	-41.1%
	Transfer In	149	46.1%	-64.7%	278	-37.4%	-37.5%	427	-21.8%	-50.7%

March 7-13, 2020			Same Week 2019		
Cat	Dog	Total	Cat	Dog	Total
777	1468	2245	1986	1643	3629
241	315	556	557	388	945
49	84	133	58	114	172
76	211	287	98	200	298
309	414	723	851	496	1347
102	444	546	422	445	867

Outcomes	Outcome Operation	Cat			Dog			Total		
		Total	Wk Chg	YoY	Total	Wk Chg	YoY	Total	Wk Chg	YoY
	<b>Total</b>	<b>595</b>	<b>-30.1%</b>	<b>-52.5%</b>	<b>1053</b>	<b>-33.0%</b>	<b>-38.6%</b>	<b>1648</b>	<b>-32.0%</b>	<b>-44.5%</b>
	Adoption	416	-31.1%	-50.8%	629	-28.5%	-41.5%	1045	-29.6%	-45.6%
	Died	25	92.3%	-46.8%	9	80.0%	28.6%	34	88.9%	-37.0%
	Euthanasia	64	-36.6%	-72.5%	62	-20.5%	-45.6%	126	-29.6%	-63.7%
	Return to Owner/Guardian	26	13.0%	-44.7%	258	-25.2%	-36.5%	284	-22.8%	-37.3%
	Transfer Out	64	-41.8%	-21.0%	95	-63.9%	-14.4%	159	-57.4%	-17.2%

March 7-13, 2020			Same Week 2019		
Cat	Dog	Total	Cat	Dog	Total
851	1571	2422	1253	1714	2967
604	880	1484	845	1076	1921
13	5	18	47	7	54
101	78	179	233	114	347
23	345	368	47	406	453
110	263	373	81	111	192

Foster Starts	Week Starting	Cat			Dog			Total		
		Total	Wk Chg	YoY	Total	Wk Chg	YoY	Total	Wk Chg	YoY
	5/16/2020	388	198.5%	-43.5%	165	31.0%	28.9%	553	116.0%	-32.1%

March 7-13, 2020			Same Week 2019		
Cat	Dog	Total	Cat	Dog	Total
130	126	256	687	128	815

Total Inventory	Week Starting	Cat			Dog			Total		
		Total	Wk Chg	YoY	Total	Wk Chg	YoY	Total	Wk Chg	YoY
	5/16/2020	5372	3.8%	-25.2%	4245	-21.9%	-22.8%	9617	-9.3%	-24.2%

March 7, 2020			Same Week 2019		
Cat	Dog	Total	Cat	Dog	Total
5173	5432	10605	7181	5502	12683

In Foster	Week Starting	Cat			Dog			Total		
		Total	Wk Chg	YoY	Total	Wk Chg	YoY	Total	Wk Chg	YoY
	5/16/2020	2023	82.7%	-17.3	1063	-4.7%	12.1%	3086	38.8%	-9.1%

March 7, 2020			Same Week 2019		
Cat	Dog	Total	Cat	Dog	Total
1107	1116	2223	2446	948	3394

In Shelter	Week Starting	Cat			Dog			Total		
		Total	Wk Chg	YoY	Total	Wk Chg	YoY	Total	Wk Chg	YoY
	5/16/2020	3349	-17.6%	-29.3%	3182	-26.3%	-30.1%	6531	-22.1%	-29.7%

March 7, 2020			Same Week 2019		
Cat	Dog	Total	Cat	Dog	Total
4066	4316	8382	4735	4554	9289

## West North Central (IA, KS, MN, MO, ND, NE, SD):

Intakes	Intake Operation	Cat			Dog			Total		
		Total	Wk Chg	YoY	Total	Wk Chg	YoY	Total	Wk Chg	YoY
	<b>Total</b>	<b>1060</b>	<b>8.2%</b>	<b>-23.1%</b>	<b>851</b>	<b>-33.6%</b>	<b>-32.3%</b>	<b>1911</b>	<b>-15.5%</b>	<b>-27.5%</b>
	Owner/Guardian Surrender	391	-3.9%	-17.9%	255	-26.7%	-19.3%	646	-14.4%	-18.4%
	Return	36	-30.8%	-21.7%	60	-41.2%	-26.8%	96	-37.7%	-25.0%
	Seized / Custody	46	0.0%	-54.5%	90	-13.5%	-39.6%	136	-9.3%	-45.6%
	Stray	444	29.4%	-16.7%	224	-41.8%	-33.9%	668	-8.2%	-23.4%
	Transfer In	143	8.3%	-35.9%	222	-35.3%	-40.2%	365	-23.2%	-38.6%

March 7-13, 2020			Same Week 2019		
Cat	Dog	Total	Cat	Dog	Total
980	1282	2262	1379	1257	2636
407	348	755	476	316	792
52	102	154	46	82	128
46	104	150	101	149	250
343	385	728	533	339	872
132	343	475	223	371	594

Outcomes	Outcome Operation	Cat			Dog			Total		
		Total	Wk Chg	YoY	Total	Wk Chg	YoY	Total	Wk Chg	YoY
	<b>Total</b>	<b>754</b>	<b>-25.7%</b>	<b>-35.1%</b>	<b>904</b>	<b>-29.6%</b>	<b>-23.4%</b>	<b>1658</b>	<b>-27.9%</b>	<b>-29.2%</b>
	Adoption	547	-21.9%	-23.1%	551	-36.0%	-24.3%	1098	-29.7%	-23.7%
	Died	23	53.3%	-50.0%	3	-75.0%	0.0%	26	-3.7%	-46.9%
	Euthanasia	101	-31.3%	-35.3%	60	-34.8%	-37.5%	161	-32.6%	-36.1%
	Return to Owner/Guardian	25	-45.7%	-39.0%	203	-20.4%	-22.8%	228	-24.3%	-25.0%
	Transfer Out	58	-45.8%	-72.0%	87	33.8%	-3.3%	145	-15.7%	-51.2%

March 7-13, 2020			Same Week 2019		
Cat	Dog	Total	Cat	Dog	Total
1015	1285	2300	1161	1180	2341
700	861	1561	711	728	1439
15	12	27	46	3	49
147	92	239	156	96	252
46	255	301	41	263	304
107	65	172	207	90	297

Foster Starts	Week Starting	Cat			Dog			Total		
		Total	Wk Chg	YoY	Total	Wk Chg	YoY	Total	Wk Chg	YoY
	5/16/2020	314	84.7%	-30.5%	168	-16.8%	-7.2%	482	29.6%	-23.9%

March 7-13, 2020			Same Week 2019		
Cat	Dog	Total	Cat	Dog	Total
170	202	372	452	181	633

Total Inventory	Week Starting	Cat			Dog			Total		
		Total	Wk Chg	YoY	Total	Wk Chg	YoY	Total	Wk Chg	YoY
	5/16/2020	5985	-1.7%	-10.7%	3631	-16.1%	-11.6%	9616	-7.7%	-11.0%

March 7, 2020			Same Week 2019		
Cat	Dog	Total	Cat	Dog	Total
6087	4326	10413	6701	4108	10809

In Foster	Week Starting	Cat			Dog			Total		
		Total	Wk Chg	YoY	Total	Wk Chg	YoY	Total	Wk Chg	YoY
	5/16/2020	2573	48.8%	22.0%	1769	22.8%	69.6%	4342	37.0%	37.8%

March 7, 2020			Same Week 2019		
Cat	Dog	Total	Cat	Dog	Total
1729	1441	3170	2109	1043	3152

In Shelter	Week Starting	Cat			Dog			Total		
		Total	Wk Chg	YoY	Total	Wk Chg	YoY	Total	Wk Chg	YoY
	5/16/2020	3412	-21.7%	-25.7%	1862	-35.5%	-39.2%	5274	-27.2%	-31.1%

March 7, 2020			Same Week 2019		
Cat	Dog	Total	Cat	Dog	Total
4358	2885	7243	4592	3065	7657



## West South Central (AR, LA, OK, TX):

Intakes	Intake Operation	Cat			Dog			Total			March 7-13, 2020			Same Week 2019		
		Total	Wk Chg	YoY	Total	Wk Chg	YoY	Total	Wk Chg	YoY	Cat	Dog	Total	Cat	Dog	Total
<b>Total</b>		2516	44.9%	-37.2%	2408	-31.8%	-39.2%	4924	-6.5%	-38.2%	1736	3529	5265	4008	3963	7971
	Owner/Guardian Surrender	555	33.7%	-33.4%	591	-27.9%	-32.5%	1146	-7.2%	-32.9%	415	820	1235	833	875	1708
	Return	39	-32.8%	-20.4%	141	-24.6%	-21.2%	180	-26.5%	-21.1%	58	187	245	49	179	228
	Seized / Custody	192	34.3%	-39.2%	296	-41.4%	-47.7%	488	-24.7%	-44.7%	143	505	648	316	566	882
	Stray	1458	58.5%	-38.7%	1038	-33.9%	-42.6%	2496	0.2%	-40.4%	920	1570	2490	2379	1808	4187
	Transfer In	272	36.0%	-36.9%	342	-23.5%	-36.1%	614	-5.1%	-36.4%	200	447	647	431	535	966

Outcomes	Outcome Operation	Cat			Dog			Total			March 7-13, 2020			Same Week 2019		
		Total	Wk Chg	YoY	Total	Wk Chg	YoY	Total	Wk Chg	YoY	Cat	Dog	Total	Cat	Dog	Total
<b>Total</b>		1630	23.5%	-43.3%	2480	-29.6%	-39.7%	4110	-15.1%	-41.2%	1320	3522	4842	2875	4112	6987
	Adoption	893	17.0%	-15.6%	1374	-19.7%	-25.4%	2267	-8.4%	-21.8%	763	1711	2474	1058	1841	2899
	Died	95	251.9%	-52.5%	19	-62.7%	-44.1%	114	46.2%	-51.3%	27	51	78	200	34	234
	Euthanasia	242	26.0%	-74.8%	203	-47.0%	-71.6%	445	-22.6%	-73.4%	192	383	575	961	715	1676
	Return to Owner/Guardian	37	-21.3%	-30.2%	342	-44.3%	-40.4%	379	-42.7%	-39.6%	47	614	661	53	574	627
	Transfer Out	363	24.7%	-39.8%	542	-29.0%	-42.8%	905	-14.1%	-41.7%	291	763	1054	603	948	1551

Foster Starts	Week Starting	Cat			Dog			Total			March 7-13, 2020			Same Week 2019		
		Total	Wk Chg	YoY	Total	Wk Chg	YoY	Total	Wk Chg	YoY	Cat	Dog	Total	Cat	Dog	Total
	5/16/2020	940	189.2%	-21.2%	524	-14.7%	0.6%	1464	55.9%	-14.6%	325	614	939	1193	521	1714

Total Inventory	Week Starting	Cat			Dog			Total			March 7, 2020			Same Week 2019		
		Total	Wk Chg	YoY	Total	Wk Chg	YoY	Total	Wk Chg	YoY	Cat	Dog	Total	Cat	Dog	Total
	5/16/2020	8948	21.4%	-31.8%	10045	-29.3%	-28.7%	18993	-12.0%	-30.2%	7373	14206	21579	13120	14082	27202

In Foster	Week Starting	Cat			Dog			Total			March 7, 2020			Same Week 2019		
		Total	Wk Chg	YoY	Total	Wk Chg	YoY	Total	Wk Chg	YoY	Cat	Dog	Total	Cat	Dog	Total
	5/16/2020	4928	83.1%	-3.9%	4433	13.7%	31.2%	9361	42.0%	10.0%	2691	3900	6591	5130	3380	8510

In Shelter	Week Starting	Cat			Dog			Total			March 7, 2020			Same Week 2019		
		Total	Wk Chg	YoY	Total	Wk Chg	YoY	Total	Wk Chg	YoY	Cat	Dog	Total	Cat	Dog	Total
	5/16/2020	4020	-14.1%	-49.7%	5612	-45.5%	-47.6%	9632	-35.7%	-48.5%	4682	10306	14988	7990	10702	18692

## East North Central (IL, IN, MI, OH, WI):

Intakes	Intake Operation	Cat			Dog			Total			March 7-13, 2020			Same Week 2019		
		Total	Wk Chg	YoY	Total	Wk Chg	YoY	Total	Wk Chg	YoY	Cat	Dog	Total	Cat	Dog	Total
<b>Total</b>		2453	25.0%	-33.3%	1565	-37.7%	-40.1%	4018	-10.2%	-36.1%	1963	2513	4476	3679	2612	6291
	Owner/Guardian Surrender	778	-3.8%	-30.7%	346	-43.4%	-41.9%	1124	-20.8%	-34.6%	809	611	1420	1123	596	1719
	Return	83	-29.7%	-38.5%	130	-27.0%	-41.2%	213	-28.0%	-40.2%	118	178	296	135	221	356
	Seized / Custody	42	-37.3%	-69.1%	116	-41.7%	-49.6%	158	-40.6%	-56.8%	67	199	266	136	230	366
	Stray	1316	81.8%	-26.3%	414	-37.9%	-49.3%	1730	24.4%	-33.5%	724	667	1391	1786	817	2603
	Transfer In	234	-4.5%	-53.1%	559	-34.8%	-25.3%	793	-28.1%	-36.4%	245	858	1103	499	748	1247

Outcomes	Outcome Operation	Cat			Dog			Total			March 7-13, 2020			Same Week 2019		
		Total	Wk Chg	YoY	Total	Wk Chg	YoY	Total	Wk Chg	YoY	Cat	Dog	Total	Cat	Dog	Total
<b>Total</b>		1610	-17.4%	-33.8%	1777	-36.5%	-36.9%	3387	-28.6%	-35.4%	1949	2797	4746	2432	2814	5246
	Adoption	1242	-16.0%	-19.4%	1265	-33.1%	-29.1%	2507	-25.6%	-24.6%	1478	1892	3370	1540	1783	3323
	Died	27	12.5%	-74.0%	8	-72.4%	-57.9%	35	-34.0%	-71.5%	24	29	53	104	19	123
	Euthanasia	170	-4.5%	-48.9%	113	-43.2%	-54.4%	283	-24.9%	-51.3%	178	199	377	333	248	581
	Return to Owner/Guardian	54	-35.7%	-67.7%	286	-31.6%	-42.9%	340	-32.3%	-49.1%	84	418	502	167	501	668
	Transfer Out	117	-36.8%	-59.4%	105	-59.5%	-60.1%	222	-50.0%	-59.7%	185	259	444	288	263	551

Foster Starts	Week Starting	Cat			Dog			Total			March 7-13, 2020			Same Week 2019		
		Total	Wk Chg	YoY	Total	Wk Chg	YoY	Total	Wk Chg	YoY	Cat	Dog	Total	Cat	Dog	Total
	5/16/2020	1002	125.7%	-14.7%	559	-0.4%	21.5%	1561	55.3%	-4.5%	444	561	1005	1174	460	1634

Total Inventory	Week Starting	Cat			Dog			Total			March 7, 2020			Same Week 2019		
		Total	Wk Chg	YoY	Total	Wk Chg	YoY	Total	Wk Chg	YoY	Cat	Dog	Total	Cat	Dog	Total
	5/16/2020	13312	4.3%	-20.8%	7997	-25.7%	-19.1%	21309	-9.4%	-20.2%	12758	10762	23520	16805	9890	26695

In Foster	Week Starting	Cat			Dog			Total			March 7, 2020			Same Week 2019		
		Total	Wk Chg	YoY	Total	Wk Chg	YoY	Total	Wk Chg	YoY	Cat	Dog	Total	Cat	Dog	Total
	5/16/2020	4279	86.7%	-7.8%	2623	-0.3%	24.0%	6902	40.2%	2.2%	2292	2630	4922	4641	2115	6756

In Shelter	Week Starting	Cat			Dog			Total			March 7, 2020			Same Week 2019		
		Total	Wk Chg	YoY	Total	Wk Chg	YoY	Total	Wk Chg	YoY	Cat	Dog	Total	Cat	Dog	Total
	5/16/2020	42990	-14.3%	-34.1%	34924	-35.9%	-37.3%	77914	-25.5%	-35.5%	10466	8132	18598	12164	7775	19939

## East South Central (AL, KY, MS, TN):

Intakes	Intake Operation	Cat			Dog			Total			March 7-13, 2020			Same Week 2019		
		Total	Wk Chg	YoY	Total	Wk Chg	YoY	Total	Wk Chg	YoY	Cat	Dog	Total	Cat	Dog	Total
<b>Total</b>		1039	106.2%	-28.2%	951	-27.2%	-30.8%	1990	9.9%	-29.5%	504	1307	1811	1447	1374	2821
Owner/Guardian Surrender		432	103.8%	-33.4%	344	-35.5%	-37.2%	776	4.2%	-35.2%	212	533	745	649	548	1197
Return		16	-36.0%	-15.8%	55	25.0%	-22.5%	71	2.9%	-21.1%	25	44	69	19	71	90
Seized / Custody		29	20.8%	-27.5%	45	-33.8%	-29.7%	74	-19.6%	-28.8%	24	68	92	40	64	104
Stray		436	127.1%	-30.5%	335	-28.3%	-29.2%	771	17.0%	-29.9%	192	467	659	627	473	1100
Transfer In		126	147.1%	12.5%	172	-11.8%	-21.1%	298	21.1%	-9.7%	51	195	246	112	218	330

Outcomes	Outcome Operation	Cat			Dog			Total			March 7-13, 2020			Same Week 2019		
		Total	Wk Chg	YoY	Total	Wk Chg	YoY	Total	Wk Chg	YoY	Cat	Dog	Total	Cat	Dog	Total
<b>Total</b>		595	15.1%	-46.8%	858	-38.5%	-40.6%	1453	-24.0%	-43.3%	517	1396	1913	1119	1444	2563
Adoption		330	2.2%	-28.3%	382	-24.2%	-39.4%	712	-13.9%	-34.7%	323	504	827	460	630	1090
Died		8	300.0%	-79.5%	4	-63.6%	-42.9%	12	-7.7%	-73.9%	2	11	13	39	7	46
Euthanasia		176	97.8%	-63.7%	93	-48.6%	-59.7%	269	-0.4%	-62.4%	89	181	270	485	231	716
Return to Owner/Guardian		19	58.3%	18.8%	97	-28.7%	-34.9%	116	-21.6%	-29.7%	12	136	148	16	149	165
Transfer Out		62	-31.9%	-47.9%	282	-50.0%	-34.0%	344	-47.5%	-37.0%	91	564	655	119	427	546

Foster Starts	Week Starting	Cat			Dog			Total			March 7-13, 2020			Same Week 2019		
		Total	Wk Chg	YoY	Total	Wk Chg	YoY	Total	Wk Chg	YoY	Cat	Dog	Total	Cat	Dog	Total
	5/16/2020	332	336.8%	17.7%	154	-31.9%	-44.2%	486	60.9%	-12.9%	76	226	302	282	276	558

Total Inventory	Week Starting	Cat			Dog			Total			March 7, 2020			Same Week 2019		
		Total	Wk Chg	YoY	Total	Wk Chg	YoY	Total	Wk Chg	YoY	Cat	Dog	Total	Cat	Dog	Total
	5/16/2020	4074	16.7%	-20.1%	5353	-16.0%	-17.2%	9427	-4.4%	-18.5%	3490	6372	9862	5098	6466	11564

In Foster	Week Starting	Cat			Dog			Total			March 7, 2020			Same Week 2019		
		Total	Wk Chg	YoY	Total	Wk Chg	YoY	Total	Wk Chg	YoY	Cat	Dog	Total	Cat	Dog	Total
	5/16/2020	1155	101.6%	-3.6%	1221	-4.0%	1.4%	2376	28.8%	-1.1%	573	1272	1845	1198	1204	2402

In Shelter	Week Starting	Cat			Dog			Total			March 7, 2020			Same Week 2019		
		Total	Wk Chg	YoY	Total	Wk Chg	YoY	Total	Wk Chg	YoY	Cat	Dog	Total	Cat	Dog	Total
	5/16/2020	2919	0.1%	-25.2%	4132	-19.0%	-21.5%	7051	-12.0%	-23.0%	2917	5100	8017	3900	5262	9162

## New England (CT, MA, ME, NH, RI, VT):

Intakes	Intake Operation	Cat			Dog			Total			March 7-13, 2020			Same Week 2019		
		Total	Wk Chg	YoY	Total	Wk Chg	YoY	Total	Wk Chg	YoY	Cat	Dog	Total	Cat	Dog	Total
<b>Total</b>		324	-44.2%	-57.0%	275	-48.5%	-57.2%	599	-46.3%	-57.1%	581	534	1115	753	642	1395
Owner/Guardian Surrender		118	-43.3%	-59.2%	69	0.0%	-34.9%	187	-32.5%	-52.7%	208	69	277	289	106	395
Return		21	-22.2%	-34.4%	15	-57.1%	-51.6%	36	-41.9%	-42.9%	27	35	62	32	31	63
Seized / Custody		1	-80.0%	-83.3%	8	-55.6%	-61.9%	9	-60.9%	-66.7%	5	18	23	6	21	27
Stray		124	-3.1%	-41.5%	103	4.0%	-23.7%	227	0.0%	-34.6%	128	99	227	212	135	347
Transfer In		60	-71.8%	-72.0%	80	-74.4%	-77.1%	140	-73.4%	-75.1%	213	313	526	214	349	563

Outcomes	Outcome Operation	Cat			Dog			Total			March 7-13, 2020			Same Week 2019		
		Total	Wk Chg	YoY	Total	Wk Chg	YoY	Total	Wk Chg	YoY	Cat	Dog	Total	Cat	Dog	Total
<b>Total</b>		297	-35.9%	-41.2%	359	-23.6%	-39.6%	656	-29.7%	-40.3%	463	470	933	505	594	1099
Adoption		265	-33.9%	-39.8%	300	-21.5%	-39.1%	565	-27.8%	-39.4%	401	382	783	440	493	933
Died		1	-87.5%	-85.7%		-100.0%	-100.0%	1	-88.9%	-88.9%	8	1	9	7	2	9
Euthanasia		21	-30.0%	-38.2%	19	-5.0%	-40.6%	40	-20.0%	-39.4%	30	20	50	34	32	66
Return to Owner/Guardian		9	-35.7%	-52.6%	39	-22.0%	-27.8%	48	-25.0%	-34.2%	14	50	64	19	54	73
Transfer Out		1	-90.0%	-80.0%	1	-94.1%	-92.3%	2	-92.6%	-88.9%	10	17	27	5	13	18

Foster Starts	Week Starting	Cat			Dog			Total			March 7-13, 2020			Same Week 2019		
		Total	Wk Chg	YoY	Total	Wk Chg	YoY	Total	Wk Chg	YoY	Cat	Dog	Total	Cat	Dog	Total
	5/16/2020	136	37.4%	-46.5%	50	-24.2%	-52.8%	186	12.7%	-48.3%	99	66	165	254	106	360

Total Inventory	Week Starting	Cat			Dog			Total			March 7, 2020			Same Week 2019		
		Total	Wk Chg	YoY	Total	Wk Chg	YoY	Total	Wk Chg	YoY	Cat	Dog	Total	Cat	Dog	Total
	5/16/2020	2272	-2.1%	-25.5%	1314	-22.8%	-24.5%	3586	-10.8%	-25.1%	2321	1701	4022	3049	1740	4789

In Foster	Week Starting	Cat			Dog			Total			March 7, 2020			Same Week 2019		
		Total	Wk Chg	YoY	Total	Wk Chg	YoY	Total	Wk Chg	YoY	Cat	Dog	Total	Cat	Dog	Total
	5/16/2020	942	57.3%	4.3%	394	-1.7%	-6.2%	1336	33.6%	1.0%	599	401	1000	903	420	1323

In Shelter	Week Starting	Cat			Dog			Total			March 7, 2020			Same Week 2019		
		Total	Wk Chg	YoY	Total	Wk Chg	YoY	Total	Wk Chg	YoY	Cat	Dog	Total	Cat	Dog	Total
	5/16/2020	1330	-22.8%	-38.0%	920	-29.2%	-30.3%	2250	-25.5%	-35.1%	1722	1300	3022	2146	1320	3466

## Middle Atlantic (NJ, NY, PA):

Intakes	Intake Operation	Cat			Dog			Total			March 7-13, 2020			Same Week 2019		
		Total	Wk Chg	YoY	Total	Wk Chg	YoY	Total	Wk Chg	YoY	Cat	Dog	Total	Cat	Dog	Total
<b>Total</b>		1360	-0.9%	-35.6%	828	-40.9%	-39.7%	2188	-21.1%	-37.2%	1372	1400	2772	2113	1373	3486
Owner/Guardian Surrender		286	-37.4%	-42.6%	135	-60.2%	-54.7%	421	-47.1%	-47.1%	457	339	796	498	298	796
Return		29	-64.6%	-51.7%	52	-44.7%	-32.5%	81	-54.0%	-40.9%	82	94	176	60	77	137
Seized / Custody		37	-22.9%	-57.5%	42	-34.4%	-46.2%	79	-29.5%	-52.1%	48	64	112	87	78	165
Stray		793	25.5%	-36.6%	255	-40.4%	-45.3%	1048	-1.1%	-39.0%	632	428	1060	1251	466	1717
Transfer In		215	40.5%	-0.9%	344	-27.6%	-24.2%	559	-11.0%	-16.7%	153	475	628	217	454	671

Outcomes	Outcome Operation	Cat			Dog			Total			March 7-13, 2020			Same Week 2019		
		Total	Wk Chg	YoY	Total	Wk Chg	YoY	Total	Wk Chg	YoY	Cat	Dog	Total	Cat	Dog	Total
<b>Total</b>		902	-29.9%	-41.6%	860	-36.2%	-37.0%	1762	-33.1%	-39.5%	1286	1349	2635	1544	1366	2910
Adoption		693	-21.1%	-29.3%	626	-35.5%	-27.5%	1319	-28.6%	-28.5%	878	970	1848	980	864	1844
Died		24	-22.6%	-68.8%	4	33.3%	-63.6%	28	-17.6%	-68.2%	31	3	34	77	11	88
Euthanasia		81	-33.1%	-60.3%	56	-43.4%	-56.3%	137	-37.7%	-58.7%	121	99	220	204	128	332
Return to Owner/Guardian		17	-41.4%	-48.5%	156	-25.4%	-43.9%	173	-27.3%	-44.4%	29	209	238	33	278	311
Transfer Out		87	-61.7%	-65.2%	18	-73.5%	-78.8%	105	-64.4%	-68.7%	227	68	295	250	85	335

Foster Starts	Week Starting	Cat			Dog			Total			March 7-13, 2020			Same Week 2019		
		Total	Wk Chg	YoY	Total	Wk Chg	YoY	Total	Wk Chg	YoY	Cat	Dog	Total	Cat	Dog	Total
	5/16/2020	725	162.7%	-6.1%	203	-9.4%	49.3%	928	85.6%	2.2%	276	224	500	772	136	908

Total Inventory	Week Starting	Cat			Dog			Total			March 7, 2020			Same Week 2019		
		Total	Wk Chg	YoY	Total	Wk Chg	YoY	Total	Wk Chg	YoY	Cat	Dog	Total	Cat	Dog	Total
	5/16/2020	8374	15.4%	-23.4%	3756	-27.3%	-29.6%	12130	-2.3%	-25.4%	7256	5164	12420	10927	5338	16265

In Foster	Week Starting	Cat			Dog			Total			March 7, 2020			Same Week 2019		
		Total	Wk Chg	YoY	Total	Wk Chg	YoY	Total	Wk Chg	YoY	Cat	Dog	Total	Cat	Dog	Total
	5/16/2020	3798	116.8%	6.9%	1325	22.5%	38.9%	5123	80.8%	13.7%	1752	1082	2834	3552	954	4506

In Shelter	Week Starting	Cat			Dog			Total			March 7, 2020			Same Week 2019		
		Total	Wk Chg	YoY	Total	Wk Chg	YoY	Total	Wk Chg	YoY	Cat	Dog	Total	Cat	Dog	Total
	5/16/2020	4576	-16.9%	-38.0%	2431	-40.4%	-44.5%	7007	-26.9%	-40.4%	5504	4082	9586	7375	4384	11759

## South Atlantic (DE, FL, GA, MD, NC, SC, VA, WV):

Intakes	Intake Operation	Cat			Dog			Total			March 7-13, 2020			Same Week 2019		
		Total	Wk Chg	YoY	Total	Wk Chg	YoY	Total	Wk Chg	YoY	Cat	Dog	Total	Cat	Dog	Total
<b>Total</b>		4461	46.8%	-28.6%	2429	-39.7%	-37.7%	6890	-2.5%	-32.1%	3039	4026	7065	6250	3896	10146
Owner/Guardian Surrender		1351	60.8%	-12.8%	701	-31.5%	-26.8%	2052	10.1%	-18.1%	840	1024	1864	1549	957	2506
Return		75	-27.2%	-31.2%	128	-30.8%	-44.1%	203	-29.5%	-39.9%	103	185	288	109	229	338
Seized / Custody		293	0.3%	-49.6%	383	-42.3%	-41.2%	676	-29.3%	-45.1%	292	664	956	581	651	1232
Stray		2032	63.6%	-35.9%	866	-29.4%	-27.3%	2898	17.4%	-33.6%	1242	1226	2468	3172	1191	4363
Transfer In		710	26.3%	-15.4%	351	-62.1%	-59.6%	1061	-28.7%	-37.8%	562	927	1489	839	868	1707

Outcomes	Outcome Operation	Cat			Dog			Total			March 7-13, 2020			Same Week 2019		
		Total	Wk Chg	YoY	Total	Wk Chg	YoY	Total	Wk Chg	YoY	Cat	Dog	Total	Cat	Dog	Total
<b>Total</b>		2807	-3.4%	-36.2%	2423	-39.8%	-42.0%	5230	-24.5%	-39.0%	2907	4023	6930	4403	4176	8579
Adoption		1614	-0.4%	-24.0%	1300	-37.5%	-41.8%	2914	-21.2%	-33.1%	1620	2079	3699	2125	2234	4359
Died		73	62.2%	-68.7%	11	-64.5%	-74.4%	84	10.5%	-69.6%	45	31	76	233	43	276
Euthanasia		444	-10.8%	-55.0%	243	-39.6%	-51.7%	687	-23.7%	-53.9%	498	402	900	986	503	1489
Return to Owner/Guardian		60	-14.3%	-35.5%	369	-39.6%	-33.8%	429	-37.0%	-34.0%	70	611	681	93	557	650
Transfer Out		616	-8.6%	-36.2%	500	-44.4%	-40.4%	1116	-29.1%	-38.2%	674	900	1574	966	839	1805

Foster Starts	Week Starting	Cat			Dog			Total			March 7-13, 2020			Same Week 2019		
		Total	Wk Chg	YoY	Total	Wk Chg	YoY	Total	Wk Chg	YoY	Cat	Dog	Total	Cat	Dog	Total
	5/16/2020	1819	182.9%	-5.7%	450	-33.7%	-3.4%	2269	71.6%	-5.3%	643	679	1322	1929	466	2395

Total Inventory	Week Starting	Cat			Dog			Total			March 7, 2020			Same Week 2019		
		Total	Wk Chg	YoY	Total	Wk Chg	YoY	Total	Wk Chg	YoY	Cat	Dog	Total	Cat	Dog	Total
	5/16/2020	17024	19.0%	-27.5%	11683	-28.7%	-24.5%	28707	-6.5%	-26.3%	14310	16379	30689	23489	15467	38956

In Foster	Week Starting	Cat			Dog			Total			March 7, 2020			Same Week 2019		
		Total	Wk Chg	YoY	Total	Wk Chg	YoY	Total	Wk Chg	YoY	Cat	Dog	Total	Cat	Dog	Total
	5/16/2020	7275	148.0%	-3.8%	3121	15.1%	45.2%	10396	84.2%	7.1%	2934	2711	5645	7559	2149	9708

In Shelter	Week Starting	Cat			Dog			Total			March 7, 2020			Same Week 2019		
		Total	Wk Chg	YoY	Total	Wk Chg	YoY	Total	Wk Chg	YoY	Cat	Dog	Total	Cat	Dog	Total
	5/16/2020	9749	-14.3%	-38.8%	8562	-37.4%	-35.7%	18311	-26.9%	-37.4%	11376	13668	25044	15930	13318	29248